

Model for Plausibility of Land Available for Wine Grape Growing based on Land Use Policy, Planning, and Regulation and Agricultural Land Conversion over Time

Prepared for the AgriRisk project, Nova Scotia Federation of Agriculture

Prepared by the School of Planning, Dalhousie University

March 31, 2018

Research team:

Dr. Eric Rapaport

Dr. Patricia Manuel

Yvonne Reeves, Research Assistant

Katie Sonier, Research Assistant

(Citation: Rapaport, E., Manuel, P., Reeves, Y., and Sonier, E. (2018, March, 28). Policy, Planning, and Regulation and Agricultural Land Conversion over Time Report. School of Planning, Dalhousie University., pp. 1-81.)



Risk Proofing Nova Scotia Agriculture: A Risk Assessment System Pilot (AgriRisk)

Nova Scotia Federation of Agriculture would like to recognize the collaborative relationships that exist among Agriculture and Agri-Food Canada and the Nova Scotia Departments of Agriculture and Environment.

Copyright 2018 ©. No license is granted in this publication and all intellectual property rights, including copyright, are expressly reserved. This publication shall not be copied except for personal, non-commercial use. Any copy must clearly display this copyright.

While the information in this publication is believed to be reliable when created, accuracy and completeness cannot be guaranteed. Use the publication at your own risk. Any representation, warranty, guarantee or conditions of any kind, whether express or implied with respect to the publication is hereby disclaimed. The authors and publishers of this report are not responsible in any manner for any direct, indirect, special or consequential damages or any other damages of any kind howsoever caused arising from the use of this Report.

Summary

This model and analysis were developed to inform future land availability for crop agricultural use, including viticulture (grape growing). The work contributed to an overall AgriRisk analysis of future grape growing suitability in Nova Scotia developed by the Atlantic Geomatics Research Group (AGRG), Nova Scotia Community College. Future land availability for crop agriculture was based on existing land use policy, planning, and regulations, as well as agricultural land conversion over time. Crop agriculture was the focus of this analysis, rather than grape growing specifically, because municipalities do not distinguish between crop types within regulatory documents. The analysis informs a range of potential outcomes for land use changes as they pertain to crop agriculture in the near and mid-term future.

The analysis process involved interpreting land use policy and regulatory conditions including land use restrictions and opportunities under existing land use zoning (where agriculture is or is not permitted) and trends of agricultural land conversion (land use converted from agriculture to another use). Discussions and validation with local planners confirmed the land use zoning classifications developed for the model were interpreted correctly and were up to date.

Plausibility categories, founded on land use regulations and current agricultural use, were used to identify a range of outcomes for lands available for agricultural use. Agricultural land conversion over a 17 or 19 year period, was used to refine the plausibility categories into scores of land available for agricultural use in the near to mid-term future. The results of the analysis were mapped for a spatial representation of the findings using ESRI ArcGIS 10.5 and displayed on the AgriRisk web viewer. The scores range from 0 – least likely available for agricultural use to 1 – most likely available for agricultural use. Around 75% of the land area analysed received a score of 0.5. This indicates that over a large portion of the province, municipal zoning neither prioritizes nor prohibits agricultural land use and very little agricultural land conversion has occurred in the period used for this research.

Contents

- Summary ii
- Introduction 1
- Background 2
- Input Data 2
 - Municipality and Village Boundaries Data 3
 - Zoning Data 3
 - Nova Scotia Property Records Database 6
 - Agricultural Land Index Program (ALIP) and Forest Inventory Data 6
 - Delimiter Lines Data 8
- Methods 9
 - Land Use Planning and Regulatory Review 9
 - Current Agricultural Land Use Analysis 9
 - Categories Representing Land Use Policy and Current Agricultural Use 9
 - Agricultural Land Conversion over Time 10
 - Plausibility Scores for Land Available for Crop Agriculture 10
 - Analysis Map 11
 - Removed Areas 11
 - Assumptions, Limitations, and Improvements 11
- Model 12
- Output Data 13
- Validation 14
 - Assumptions, Limitations, Improvements 14
- Results 15
- Interpretation 17
 - Assumptions, Limitations, Improvements 17
- Conclusion 18
- Recommendations 19
- References 20
 - Policies, Plans, and Regulations 20
 - Data 28
 - Report 30

Appendix	31
Data Dictionary	31
Glossary of Terms.....	32
Disclaimer.....	33
Matrices	34

Introduction

This model and analysis were developed to inform future land availability for agricultural use for the AgriRisk analysis of future grape growing suitability in Nova Scotia developed by the Nova Scotia Community College's Applied Geomatics Research Group. Future land availability was analyzed based on land use policy, planning and regulations as well as agricultural land conversion (land use converted from agriculture to another use) over time for each of the 50 municipalities in Nova Scotia. Existing municipal regulatory documents were reviewed for regulations that permit, prioritize, or prohibit crop agriculture. In this review, crop agriculture was interpreted based on the definition of "Agriculture" or "Agricultural Use" as defined in each land use by-law individually.

The objectives of this project were to:

- Classify land into plausible outcomes of land available for crop agricultural use in the near to mid-term future¹ based on:
 - A review of municipal land use policies, regulations, and by-laws for crop agricultural allowances and restrictions; and
 - Measured changes in agricultural land conversion over time within land use planning zones.
- Produce a digital map of Nova Scotia showing plausible land availability for crop agriculture with information on municipal land use restrictions pertaining to crop agriculture.

There are 50 municipalities in Nova Scotia comprising three regional, nine county, 12 district and 21 town municipalities. The county and district municipalities are predominantly rural areas with small settlement areas contained within their jurisdictions. The regional municipalities include rural and urban areas. All 50 municipalities were included in this analysis thereby providing full coverage of the province since all areas of Nova Scotia fall within a municipality. The municipal government focus is on land use zoning that regulates what land uses are permitted in any given area.

¹ The agricultural land use change shows trends over 17 or 19 years depending on the dataset used for each municipality (see methods section). Land use planning is presumed to remain the same over that timeframe because it is not possible to predict future changes to municipal regulations.

Background

Land use policy, planning, and regulation were used to understand future availability of land for agriculture because they dictate permitted and restricted uses for all areas of the Province. Those uses will influence where, and what type, of development can occur in any given area now and into the near to mid-term future.

In Nova Scotia, land use planning authority is passed down to local governments from the Province of Nova Scotia through the Municipal Government Act (Government of Nova Scotia, 2018). In Nova Scotia, municipalities are not required to undertake land-use planning, but when they do the municipal planning strategy informs the land use by-law which regulates the uses and development of land. Municipal planning strategies and land use by-laws can also focus on a specific area or topic rather than the entire municipality. For example, wind power may be the sole topic addressed in the municipal planning strategy and the land use by-law establishes the locations and rules for installing wind power infrastructure.

Land use regulations are unique to each local jurisdiction in Nova Scotia. Municipalities are given flexibility in how they manage their lands resulting in a varied amount of land use regulations throughout the Province. Some areas have comprehensive zoning while other areas have no land use planning in place and therefore no restrictions on uses other than what may be controlled under provincial regulations (such as environmental regulations). Within counties and districts for example, land use by-laws and zoning may be developed for settlement areas whereas the rural areas of the municipality may not have land use planning.

Agricultural land conversion was also examined in this project to understand trends in agricultural land loss or gain over time within regulatory zones. Changes including losses and gains of agricultural land over a 17 or 19 year period (depending on location in the province) were used as an indication of potential future trends.

Input Data

The spatial data used for this model were diverse and were acquired from multiple sources including:

- Municipality and Village Boundaries dataset obtained from the Nova Scotia Topographic Database;
- Zoning data from thirty-six municipalities and zoning data digitized from pdf or paper maps;
- Nova Scotia Property Records Database from Service Nova Scotia - Geographic Information Service;
- Agricultural Land Index Program (ALIP) data from the Atlantic Geomatics Research Group (AGRG), Nova Scotia Community College;
- Forest Inventory data from the Nova Scotia Department of Natural Resources; and,
- Delimiter Lines data from the Nova Scotia Topographic Database.

References for all datasets are included in the *References* section of this report.

Municipality and Village Boundaries Data

Municipal jurisdiction boundaries were delineated using the Municipality and Village Boundaries dataset from Nova Scotia Topographic Database where municipal data were not available. This was the case for areas without land use planning or GIS data. The areas without land use planning, or with only one land use zone, were analyzed and represented using the municipal boundary contained in this dataset.

Zoning Data

Thirty-six municipalities provided GIS zoning data for this project (See Table 1). The data represent the current land use zones used by those municipalities. Each municipality that provided zoning shapefiles had unique data specific to its jurisdiction. The methods used by each municipality to develop zoning data are not known and the boundary lines between jurisdictions do not always match within the analysis, resulting in sliver polygons (See Figure 1). Furthermore, some municipalities include features such as roads, Federal lands, and waterbodies within the zoning boundaries whereas other municipalities remove those features. These inconsistencies are seen in the results of the analysis.

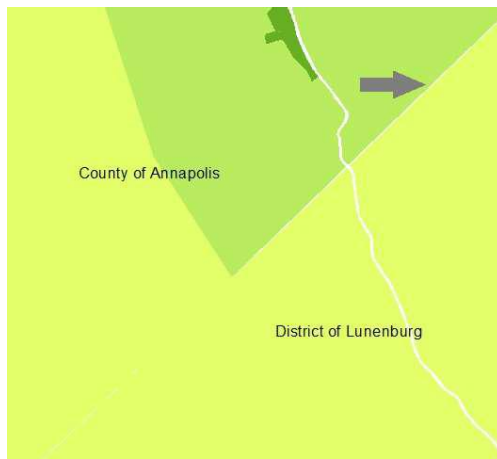


Figure 1: A sliver can be seen between the boundaries of the County of Annapolis and the District of Lunenburg where municipal boundaries from the zoning data do not line up.

Land use zones were digitized by the Dalhousie project team from pdf and paper maps (See

) imported into ArcGIS 10.5 for municipalities that did not have GIS zoning data. Two methods were used to 'heads up' digitize pdf and paper zoning maps. The first method involved selecting parcels from the Property data and assigning a zone code to each property, then dissolving the properties together into zones. The second method was to split the Municipality and Village Boundaries data using both the pdf and property parcels as a guide. These methods were used because most land use zone boundaries follow parcel boundaries. Where zones did not follow property lines, zone boundaries were traced from the pdf zoning map.

Only zones that permit crop agricultural use or contained agricultural lands, according to the ALIP or Forest Inventory data, were included in the 'heads up' digitized towns and the District of St. Mary's. All other zones were classified as "N/A" (not applicable) in the *Zone_Code* field of the analysis results. All zones for other municipalities were digitized.

One municipality, the District of Barrington, did not have a pdf copy of its zoning map. The zones for this municipality were digitized from a paper map. The digitizing does not include the "CW" Coastal Wetland zone as designated by the municipality because the team was not able to accurately digitize this zone from a paper version of the zoning map. The zone was therefore excluded from the analysis.

Table 1: Zoning data types

Municipality	GIS Data	PDF Map	Paper Map
Cape Breton Regional Municipality			
County of Annapolis			
County of Antigonish			
County of Colchester			
County of Cumberland			
County of Inverness			
County of Kings			
County of Pictou	Only one zone. Administrative boundary used.		
County of Richmond			
County of Victoria			
District of Argyle			
District of Barrington			
District of Chester			
District of Clare	Only one zone. Administrative boundary used.		
District of Digby			
District of East Hants			
District of Guysborough			
District of Lunenburg		Oakland Plan Area	
District of Shelburne			
District of St. Mary's		*Only relevant zones digitized	
District of West Hants			
District of Yarmouth			
Halifax Regional Municipality			
Region of Queens Municipality	Modified		
Town of Amerst			
Town of Annapolis Royal			
Town of Antigonish			
Town of Berwick			
Town of Bridgewater			
Town of Clark's Harbour	*No relevant zones. Used administrative boundary.		
Town of Digby		*Only relevant zones digitized	
Town of Kentville			
Town of Lockport		*Only relevant zones digitized	

*Relevant zones are zones that permit crop agricultural use or have past or current agricultural use taking place within the zone boundaries

Table 2 continued: Zoning data types			
Municipality	GIS Data	PDF Map	Paper Map
Town of Lunenburg		*Only relevant zones digitized	
Town of Mahone Bay (Chester)			
Town of Middleton			
Town of Mulgrave		*Only relevant zones digitized	
Town of New Glasgow			
Town of Oxford		*Only relevant zones digitized	
Town of Pictou			
Town of Port Hawkesbury			
Town of Shelburne		*Only relevant zones digitized	
Town of Stellarton			
Town of Stewiacke			
Town of Trenton			
Town of Truro		*Only relevant zones digitized	
Town of Westville			
Town of Windsor			
Town of Wolfville			
Town of Yarmouth			

*Relevant zones are zones that permit crop agricultural use or have past or current agricultural use taking place within the zone boundaries

Nova Scotia Property Records Database

The property dataset from Service Nova Scotia - Geographic Information Service was used to digitize land use zoning boundaries for municipalities that did not have GIS zoning data. Zoning boundaries typically follow property boundaries (the exceptions are environmental protection setbacks that parallel features such as stream courses and shorelines, or conservation land features such as wetlands).

Property data were also used to remove road polygons from the results of the analysis. This was done to ensure consistency in how the data was displayed in the final map.

Agricultural Land Index Program (ALIP) and Forest Inventory Data

Agricultural Land Index Program (ALIP) data were acquired from Atlantic Geomatics Research Group (AGRG), Nova Scotia Community College for the years 1997/1998 and 2017 to denote agricultural land use in Nova Scotia at those times. Comparing the agricultural land cover at these two time periods provided a measure of the change in the extent of agricultural land in each zone within the province over the 17 to 19 year time span. The data from 2017 is a beta version and does not cover the entire Province of Nova Scotia; therefore, the 'Agriculture' attribute in the FORNON field of the Forest Inventory data was used to identify agricultural land in municipalities that did not have coverage from the 2017 ALIP data. Both the ALIP and Forest Inventory were created using aerial photographs. The

dataset used for each municipality is shown in Table 3. Uncertainty analysis was conducted since the forestry data was not intend for agriculture inventory as the primary purpose. The 1998 ALIP compared to 1992 Forestry data resulted in 95 percent agreement or 5% is miss classified as some other use as Agriculture. The 2017 ALIP compared to 2009 Forest data set, there is 96 percent agreement. Given this was the best available information available given the budgetary and time constraints of this project, we consider the forest data was the best available information for determining change in agriculture over time in locations where ALIP data was not available.

Table 3: Data used to determine agricultural land conversion in each municipality

ALIP (NCDA) (1998 and 2017)	Forestry (NSDNR) (1992 and 2009)
County of Annapolis	Cape Breton Regional Municipality
County of Kings	County of Antigonish
Pictou County	County of Colchester
District of Chester	County of Cumberland
District of Clare	County of Inverness
District of Digby	County of Richmond
District of East Hants	County of Victoria
District of Lunenburg	District of Guysborough
District of Yarmouth	District of St. Mary's
District of West Hants	Halifax Regional Municipality
Region of Queens	Town of Amherst
District of Barrington	Town of Antigonish
District of Argyle	Town of Mulgrave
District of Shelburne	Town of New Glasgow
Town of Annapolis Royal	Town of Oxford
Town of Berwick	Town of Pictou
Town of Bridgewater	Town of Port Hawkesbury
Town of Digby	Town of Trenton
Town of Kentville	Town of Truro
Town of Lockport	Town of Stewiacke
Town of Lunenburg	Town of Westville
Town of Mahone Bay	
Town of Middleton	
Town of Shelburne	
Town of Stellarton	
Town of Windsor	
Town of Wolfville	
Town of Yarmouth	

Delimiter Lines Data

Delimiter Lines data were used to remove Federal and provincial parks, protected areas, wildlife areas, game reserves, military reserves and First Nations land from the final analysis. Municipalities do not have jurisdiction over these areas.



Methods

This analysis began with a review of land use planning and regulations and identification of current agricultural land use in municipalities to create plausibility categories for lands available for future agricultural use. These categories were assigned baseline scores of '0', '0.25', '0.5', '0.75', and '1', described in Table 4.

The analysis then refined the categories by incorporating agricultural land conversion, loss or gain of agricultural land, to develop final plausibility scores that represent a range of outcomes on a scale of '0' to '1', where '0' indicates the least likelihood (least likely, least plausible) that land will be available for crop agriculture and '1' indicates the greatest likelihood (most likely, most plausible) that land will be available for crop agriculture in the near and mid-term future.

The analysis was carried out using ESRI ArcGIS 10.5 and Microsoft Excel and is displayed spatially in a province wide map. The final result is a file geodatabase containing a vector dataset of the final plausibility scores using the NAD83, Universal Transverse Mercator Zone 20 coordinate system. Further information on land use planning restrictions, agricultural use, and agricultural land conversion is contained within the attributes of the dataset.

Land Use Planning and Regulatory Review

Local land governance was the focus of this analysis. An examination of municipal planning documents, municipal planning strategies and land use by-laws provided an understanding of regulations pertaining to crop agriculture for each municipality. A review of each municipality's municipal planning strategy and land use by-law established which land use zones permit, prioritize, or prohibit crop agriculture. Animal husbandry was not considered for this review and is treated differently than crop agriculture in many municipalities. The results of this review are documented in the land use by-law matrices included in the *Appendix* of this report.

Current Agricultural Land Use Analysis

This analysis also considered areas where agriculture is currently occurring in the municipalities based on the most recent ALIP and Forest Inventory data. Areas currently used for agricultural were presumed to have a higher likelihood of remaining in agricultural use in the future. All areas and agricultural types covered by the ALIP data and all areas categorized as "Agriculture" in the FORNON field of the Forest Inventory data were included in the analysis. Table 4 shows how current agricultural use was factored into the analysis.

Categories Representing Land Use Policy and Current Agricultural Use

Plausibility categories for lands being available for crop agriculture were developed from land use zoning and current agricultural land use as shown in 4. The zoning and agricultural land digital spatial data were combined using the 'union' tool in ESRI ArcGIS 10.5 to create polygons. The polygons were then assigned a number based on the attributes of each dataset.

Table 4: Categories of permitted agricultural land use and current agricultural use

Category	Rationale
0	<ul style="list-style-type: none"> Land use zoning does not allow for crop agricultural uses; and, No agricultural use is currently occurring.
0.25	<ul style="list-style-type: none"> Land use zoning does not permit crop agricultural use; and, Agricultural use is currently occurring.
0.50	<ul style="list-style-type: none"> Land use zoning permits crop agricultural uses amongst other uses; and, No agricultural use is currently occurring.
0.75	<ul style="list-style-type: none"> Land use zoning permits crop agricultural uses amongst other uses; and, Agricultural use is currently occurring.
1	<ul style="list-style-type: none"> Land use zoning prioritizes agricultural use; and Agricultural use is or is not occurring.

Agricultural Land Conversion over Time

Each plausibility category was refined based on the trend of agricultural land conversion – percent decrease in agricultural use, percent increase in agricultural use, or no significant change in agricultural use (values of less than a 1% change).

The 1997/1998 and 2017 ALIP data, and 1992 and 2009 Forest Inventory data, were combined using the “union” tool in ESRI ArcGIS 10.5 to group agricultural lands into the following conversion classes: *Not in agricultural use* (no agricultural use was identified in either year of data); *In agricultural use* (agricultural use was identified in the current data but not the older dataset); *No longer in agricultural use* (agricultural use was identified in the older data but not the new); and, *In agricultural use for 15+ years* (agriculture was identified in both the older and newer data). The conversion classes were then combined with the zoning data using the “union” tool in ESRI ArcGIS 10.5 and the attributes exported into Microsoft Excel where the percent of change was calculated for each land use zone.

To calculate the percent of change for each zone, the area of each agricultural change class within a zone was divided by the total area of the zone and multiplied by 100. Any values below 1 percent were dismissed as error and assigned a value of 0. The following equation was used to calculate the percent of change over time:

$$\% \text{ In agricultural use} - \% \text{ No longer in agricultural use} = \% \text{ Change Over Time}$$

We calculated the proportion of agricultural land use in each zone for both years then calculated the difference in the proportion between the two years. Therefore, 1 acre increasing to 2 acres in a zone with an area of 20 acres would result in the equation: $10\% - 5\% = 5\%$ (or 0.05 change over time on a scale from 0-1)

Plausibility Scores for Land Available for Crop Agriculture

The following calculation was used to determine the final score for each of the parcels within the combined land use planning and agricultural land conversion data:

$$\% \text{ Change Over Time} / 100 + \text{Category (from Table 4)}$$

This calculation provides a range of numbers between 0 – *Least likely available for agricultural use* and 1 – *Most likely available for agricultural use*. Scores of less than 0 were assigned “0” and scores of greater than 1 were assigned “1”.

Analysis Map

The plausibility scores calculated in Microsoft Excel were brought back into ESRI ArcGIS 10.5 using the ‘Join’ tool for each municipality. The municipalities were then merged together to spatially represent the scores on a province wide map. Land use zones range in size and shape which is clearly represented on the final analysis map.

Removed Areas

Areas where municipalities do not have jurisdiction over land use planning and regulations were removed from the final analysis map using the Nova Scotia Topographic Database - Delimiter Lines data. The following areas were removed and given a <NULL> value in the attribute table: Federal and provincial parks, protected areas, wildlife areas, game reserves, military reserves and First Nations land.

Road polygons were also removed from the final analysis map using road polygons from the Nova Scotia Property Records Database. This was to represent the information in a consistent manner throughout the municipalities. The following road polygons were selected and removed from the analysis: ‘ROAD_SEG’ from the SOURCE_ID field and ‘CDPIR6’, ‘CDPIR7’, and ‘CDPIAR6’ from the DFX_LAYER field.

Assumptions, Limitations, and Improvements

There are two assumptions made with the data used for this analysis. First, the analysis assumes that the agricultural data from the ALIP and Forest Inventory were the best available information for the representations of agricultural land use for the dates on which data were created. A second assumption, the quality of the ALIP and Forest Inventory data was treated as equivalent regarding uncertainty in how the land was identified as agricultural land.

A limitation of the data is that current ALIP data from 2017 is not available for all of the municipalities included in this analysis; as a substitute, the Forest Inventory data was used in municipalities where two years of ALIP data were not available. The datasets have different time periods: the ALIP data are from 1998 and 2017, a 19 year time frame, and the Forest Inventory data are from 1992 and 2009, a 17 year time frame. The forest data is captured over different time periods in itself, there is not full coverage for the province in any given year. Thus there will be inaccuracies if the change in land use regarding any assumption about rates of change occurring within a time span. Improvements to this analysis spanning two periods for land use change historically would be difficult. A review satellite remote sensing imagery covering the entire province that could capture agricultural land use is not readily available either. This analysis could be improved once the newest ALIP dataset is available for the entire province; using only ALIP data would ensure consistency in identifying land conversion out of or into agriculture throughout the municipalities within the same time frame. Going forward the province should monitor agriculture land use by collecting data at regular intervals using satellite imagery and establish a protocol interpretation standards in order to determine the distribution and change over time.

Model

The flow chart in Figure 2 presents the steps described in the Method section.

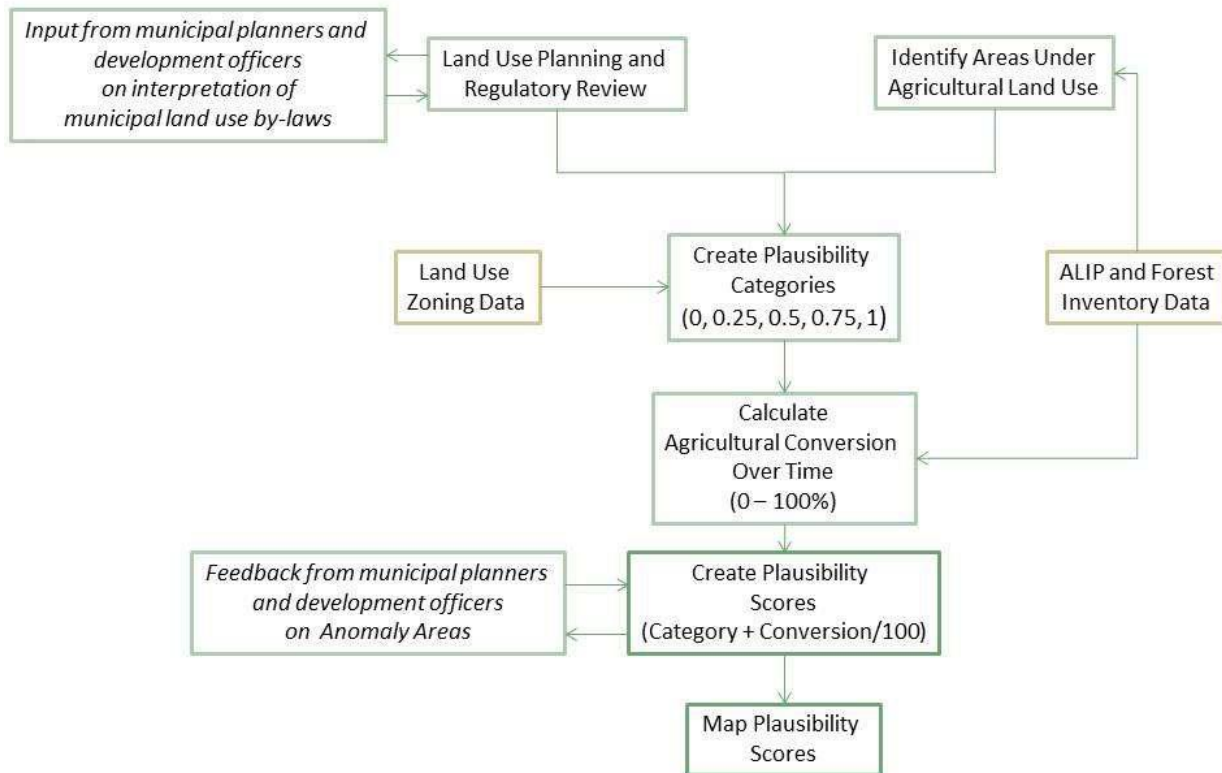


Figure 2: Workflow Model

Output Data

The output dataset created through this analysis is in vector format and stored within a Geodatabase. The analysis map is displayed on the AgriRisk project’s web viewer and is visually represented by the final plausibility score. Table 5 shows the additional information contained in the dataset provided for the web viewer and available for users to access. The “Field Names” from the analysis were given “Field Aliases” to better convey the information to users of the web viewer.

Table 5: Output Data Contents

Field Name	Field Alias	Contents
Score	Score	<ul style="list-style-type: none"> • Number between 0-1
Municipality	Municipality	<ul style="list-style-type: none"> • Names of Municipalities
LUB	Land Use By-law	<ul style="list-style-type: none"> • Names of By-laws
Zone_Code	Land Use Zone	<ul style="list-style-type: none"> • Zone Codes (or names where no codes exist)
Amended	Amended to	<ul style="list-style-type: none"> • Dates by-law amended to
Accessed	Date Accessed	<ul style="list-style-type: none"> • Dates by-laws were read
Agri_Regulation	Agricultural Use Regulation	<ul style="list-style-type: none"> • Permits crop agriculture; • Does not permit crop agriculture; or, • Prioritizes agricultural use
Agri_Use	Agricultural Use	<ul style="list-style-type: none"> • Not in agricultural use; • No longer in agricultural use; • In agricultural use; or, • In agricultural use for 15+ years
Change_Ag_Zone	Change in Agricultural Use within Zone	<ul style="list-style-type: none"> • Increase in agricultural use; • Decrease in agricultural use; or, • No significant change in agricultural use

The output data was also provided to the Nova Scotia Community College’s Applied Geomatics Research Group where it was converted to raster data and incorporated into their analysis of future grape growing suitability.

Validation

The model was validated through discussions with municipal planners and development officers. Discussions with municipal staff focused on the matrices included in the *Appendix*, as well as anomaly areas where agriculture appeared to have increased even though the land use by-law prohibited agricultural use. Two in-person meetings and three phone meetings with municipal staff served to verify zones permitting agriculture and to understand the contexts by which zones that prohibit agricultural use showed large increases in agricultural use. A total of seventeen municipalities provided feedback on the land use planning matrices.

Assumptions, Limitations, Improvements

The analysis assumes that the agricultural data used are accurate. When validating the findings, municipal staff familiar with the land uses within their jurisdiction identified where some areas were misrepresented by the agricultural data. In zones that cover smaller areas, the percent change in agricultural lands was amplified where errors in the agricultural data existed. For example, at Upper Clements Park in Annapolis County, large areas of the amusement park are classified as agricultural land in a zone where agriculture is not permitted. One area of land within the park was cleared for an expansion and another area was a former orchard that is maintained but not used for agricultural purposes.

This analysis also assumes that current land use policies were in effect prior to, and within, the time frame for which agricultural land conversion was calculated. The time frame of regulations and agricultural land conversion was discussed with planners to understand the local context. A limitation of this analysis is that the timing of when agriculture land conversion occurred in relation to the current plan and by-law was difficult for municipal staff to confirm in most cases. More frequent years of agricultural land use data would improve our understanding of how the timing of introducing regulations may have influenced agricultural land conversion rather than analyzing the change based on two dates separated by many years. For example, the Agricultural Reserve (AR) zone in the Municipality of East Hants is based on agricultural land use identified by the municipality at the time its current planning regulations were adopted. This municipality, therefore, has another available timestamp of agricultural use as documented by the municipality at the time the plan was developed in 2016.

Results

The results of this work show a range of plausible outcomes for land availability for agriculture in the near to mid-term future based on current municipal land use planning and agricultural land use changes over time. The analysis produced scores on a scale of 0 to 1 with “0” indicating that land is (or will be) least likely available for crop agricultural use and “1” indicating that land is (or will be) most likely available for crop agricultural use.

Table 6 shows a summary of the distribution of scores created during the analysis. It is important to note that the areas assigned the score 0.5 covered 40,417km² - approximately 75% of the Province. Scores of 0.5 indicate that those areas do not prioritize or prohibit agricultural use and that no significant agricultural land use conversion has occurred. With this in mind, the results show that the majority of the land in Nova Scotia falls within the middle of the plausibility score range where there is less certainty surrounding those lands being available for agricultural use in the near to mid-term future.

Table 6: Summary of the distribution of plausibility scores

Plausibility Score	Mean Score	Area (Km ²)	Percent of total area including null values	Percentage of total area excluding null values
0.91 - 1	0.99	726	1.34%	1.53%
0.81 - 0.9	0.84	4	0.01%	0.01%
0.71 - 0.8	0.75	1,714	3.17%	3.60%
0.61 - 0.7	0.67	9	0.02%	0.02%
0.51 - 0.6	0.53	2,192	4.06%	4.61%
0.41 - 0.5	0.49	40,711	75.36%	85.59%
0.31 - 0.4	0.35	2	0.00%	0.00%
0.21 - 0.3	0.25	44	0.08%	0.09%
0.11 - 0.2	0.17	20	0.04%	0.04%
0 - 0.1	0.00	2,143	3.97%	4.51%
Null	N/A	6,456	11.95%	
Total are including null values:		54,021		
Total area excluding null values:		47,565		

ESRI ArcGIS 10.5 was used to map the scores of land availability for agriculture and, by extension, wine grape growing in the future. The scores were developed from categories of land use zones and current agricultural use added to the percent of agricultural conversion within each land use zone over a 17 or 19 year time frame. Figure 3 shows an image of the map for reference. The details of the analysis can be viewed on the project’s web viewer.

Model for Plausibility of Land Availability for Wine Grape Growing Based on Land Use Policy, Planning, and Regulation and Agricultural Use Over Time

Prepared for the AgriRisk project, Nova Scotia Federation of Agriculture
Prepared by the School of Planning, Dalhousie University
March 31, 2018

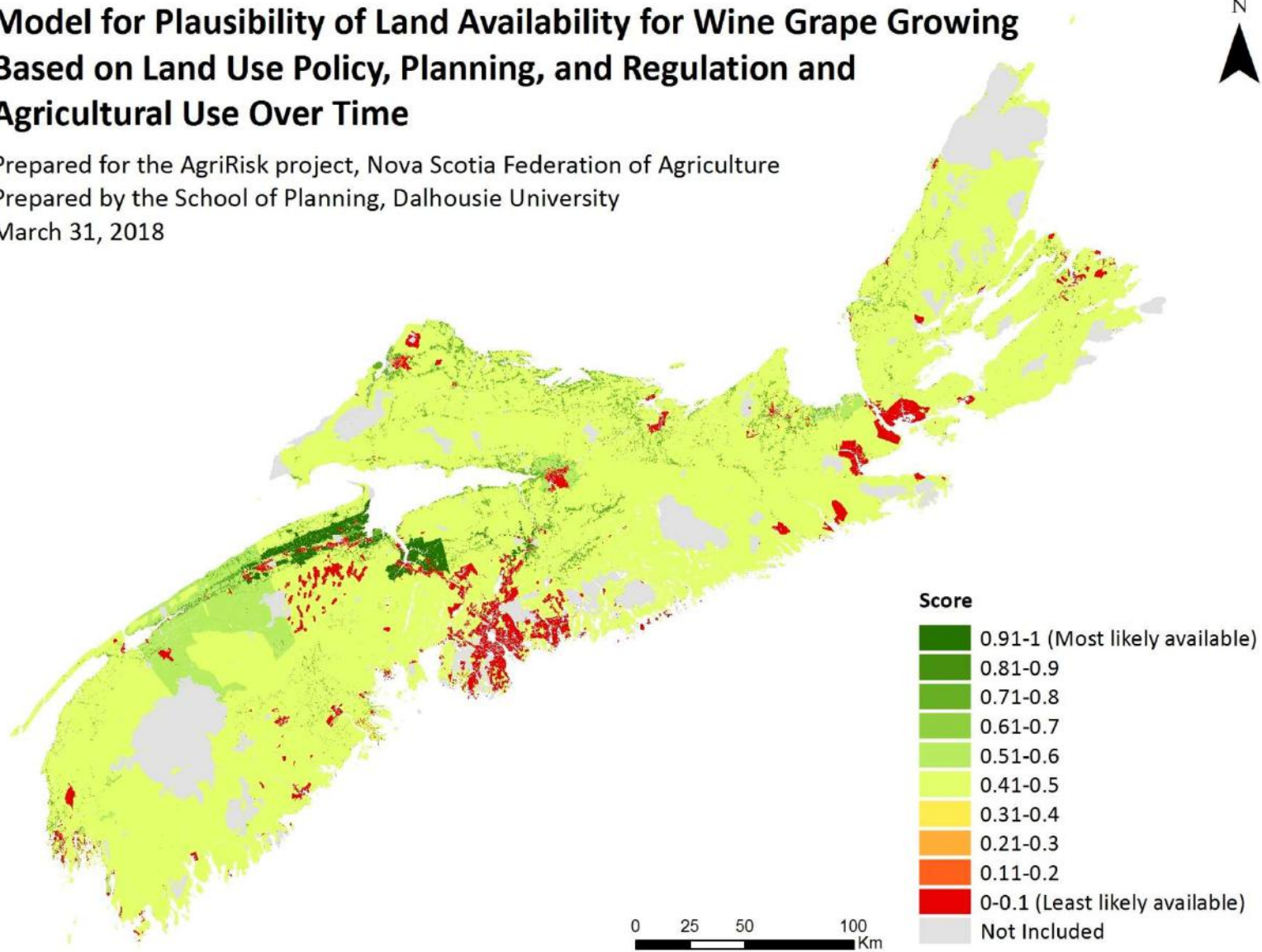


Figure 3: Analysis data as shown in ESRI ArcGIS 10.5

Interpretation

General trends in land availability were evident in the results of this analysis. Areas with no land use planning or general use zoning (which permits most land uses in rural areas) remained at the number assigned within the plausibility category because no significant change in agricultural land conversion was found in those areas. These unplanned and general use zones cover the majority of lands in Nova Scotia as seen in the map. One exception to this was in Annapolis County where there was an increase in agriculture land use in the General Development (GD) zone which covers a large area of the municipality.

The lowest scores occur in and around settlement areas including cities, towns, and villages, as well as drinking water protection areas. Settlement areas have more detailed restrictions on zoning and often designate current settlement areas as desired growth centers for commercial and residential uses. The restrictions in and around settlement areas, therefore, prohibit rural land uses such as agriculture. Drinking water protection areas have many restrictions on permitted uses to protect the drinking water supplies of settlement areas, excluding those areas from agricultural uses as well.

The areas with the highest scores are found throughout the County of Kings and Districts of West Hants and East Hants. These municipalities had the largest areas of land with zoning that prioritizes agricultural use over other land uses. A large agricultural zone is present in the County of Kings where the regulations protect areas suitable for agriculture as determined by soil types. This contrasts with the scattered agricultural zone in East Hants where existing agricultural uses were used to delineate the agricultural zone boundary.

Assumptions, Limitations, Improvements

An assumption made during this project is that the land use policy, planning, and regulations in any given municipality will not change in the near or mid-term future even though, in practice, some changes are likely. Changes occur through routine plan amendments and periodic comprehensive plan reviews. Amendments are usually initiated by development interests. Since the pace of development is slow in rural areas, change is less frequent than in urban areas. Two municipalities, the County of Kings and the County of Cumberland, are currently undertaking comprehensive plan reviews. Future changes to land use regulations cannot, however, be foreseen in how they will impact lands available for agricultural use. This is a limitation of the project that could be improved upon with updates to the analysis when policy and by-law changes occur.

Conclusion

This analysis uses land use policy, planning, and regulations as well as agricultural land conversion over time to create a range of plausible scenarios for lands available for crop agricultural use in the near and mid-term future. Local land use planning in 50 Nova Scotian municipalities was studied to understand where crop agriculture is permitted, prioritized, or restricted throughout Nova Scotia. This information was translated spatially using municipal zoning maps brought together into ESRI ArcGIS 10.5 to create a province wide map. Current agricultural use and agricultural land conversion were also calculated for each land use zone and factored into the analysis. These two types of information provide an understanding of where new agricultural uses may occur and the trends in agricultural use over time in any given land use zone.

Recommendations

Further refinement and updates to this analysis are recommended to gain a better understanding of plausible areas available for agricultural use into the future. Limitations on the data available and timeframe of this project can be improved upon with further study. Furthermore, municipal staff showed an interest in the project and in learning more about the results of the AgriRisk project as a whole.

The analysis could be improved by updating the analysis with the updated ALIP data as it becomes available. The interpretation of the 2017 ALIP data was incomplete for the NS municipalities for this analysis and Forest Inventory data replaced the ALIP data for interpreting agriculture land use and conversion in 21 of the 50 municipalities. This update would ensure consistency in the time frame analyzed in all areas and in the methods used for creating agricultural land data. Furthermore, updates to the analysis when municipalities complete municipal planning strategy and land use by-law reviews would ensure that the analysis reflects the most recent regulations as they evolve over time. Two municipalities are now conducting plan reviews and the outcomes could lead to land use planning and zoning changes that might affect the plausibility scores within their jurisdictions.

This analysis can also be improved with further consultation with planners and development officers through a survey or focus groups involving staff familiar with local development trends and decision making. Municipal staff could be asked to assign their own likelihood scores to land use zones. The input of local expert knowledge would further refine the plausibility scores assigned to each area.

Population growth forecasting can also be incorporated into the analysis to better understand where increased development pressures around settlement areas, urban centers, towns, and villages are likely to put pressure on available agricultural land. Population growth forecasting would also inform which areas have a declining population and little to no development pressure on undeveloped and agricultural lands.

Municipal planners and development officers were the focus of the outreach for this project. Some CAOs and GIS technologists were also contacted to acquire planning documents and zoning shapefiles. Municipal staff indicated that they themselves, and staff in other departments, are interested in the results of the AgriRisk project for land use planning and local economic development purposes. Future workshops with municipalities can help municipalities incorporate this work into local development and decision making across the Province.

References

Policies, Plans, and Regulations

- Annapolis District Planning Commission. (2000; amended to 2012). Land Use By-Law: Town of Annapolis Royal. Retrieved from https://annapolisroyal.com/wp-content/uploads/2016/09/AR_lub_text.pdf
- Annapolis District Planning Commission. (2000; amended to 2008). Municipal Planning Strategy: Town of Annapolis Royal. Retrieved from https://annapolisroyal.com/wp-content/uploads/2016/09/AR_mps_text.pdf
- Annapolis District Planning Commission. (1998; amended to 2014). Land Use By-Law: Town of Middleton. Retrieved from http://www.avliu.ca/adpcweb/pdf/MT/MT_lub_text.pdf
- Annapolis District Planning Commission. (1998; amended to 2014). Municipal Planning Strategy: Town of Middleton. Retrieved from http://www.avliu.ca/adpcweb/pdf/MT/MT_mps_text.pdf
- Cape Breton Regional Municipality. (2004; amended to 2018). Land Use By-Law of the Cape Breton Regional Municipality. Retrieved from http://www.cbrm.ns.ca/images/Planning/CBRM_LUB_with_amendments_to_March_19_2018.pdf
- Cape Breton Regional Municipality Planning Department. (2004; amended to 2017). Municipal Planning Strategy of the Cape Breton Regional Municipality. Retrieved from http://www.cbrm.ns.ca/images/Planning/CBRM_MPS_with_amendments_to_October_7th_2017.pdf
- County of Annapolis. (2011). County of Annapolis Land Use Bylaw. Retrieved from <https://annapoliscounty.ca/community-development/41-zoning-development-control-unlisted/287-county-of-annapolis-land-use-bylaw>
- County of Annapolis. (2011). County of Annapolis Municipal Planning Strategy. Retrieved from <https://www.annapoliscounty.ca/community-development/41-zoning-development-control-unlisted/288-county-of-annapolis-municipal-planning-strategy>
- Eastern District Planning Commission. (2009). Baddeck; Land Use By-law. Retrieved from http://www.edpc.ca/plandocs/baddeck/baddeck_LUB.pdf
- Eastern District Planning Commission. (2009). Baddeck; Municipality of the County of Victoria; Municipal Planning Strategy and Land Use Bylaw. Retrieved from http://www.edpc.ca/plandocs/baddeck/baddeck_MPS.pdf
- Eastern District Planning Commission. (2015; amended to 2017). Inverness Land Use By-Law; Municipality of the County of Inverness. Retrieved from http://www.edpc.ca/plandocs/inverness/Inverness_LUB.pdf
- Eastern District Planning Commission. (2015). Inverness Secondary Plan; Municipality of the County of Inverness. Retrieved from http://www.edpc.ca/plandocs/inverness/Inverness_MPS.pdf

- Eastern District Planning Commission. (2015). Town of Port Hawkesbury Land Use By-law. Retrieved from http://www.edpc.ca/plandocs/porthawkesbury/PHAWK_LUB.pdf
- Eastern District Planning Commission. (2010). Town of Port Hawkesbury Municipal Planning Strategy. Retrieved from <http://www.edpc.ca/plandocs/porthawkesbury/PortHawkesburyMPS.pdf>
- FOTENN Planning + Design. (2016). Town of Wolfville DRAFT Municipal Planning Strategy. Retrieved from https://wolfville.ca/images/Community_Development/DRAFT%20Municipal%20Planning%20Strategy.pdf
- Government of Nova Scotia. (2018). Municipal Government Act: Chapter 18 of the acts of 1998. Retrieved from <https://nslegislature.ca/sites/default/files/legc/statutes/municipal%20government.pdf>
- Halifax Regional Municipality. (2000; amended to 2017). Land Use By-Law for Beaver Bank, Hammonds Plains and Upper Sackville. Retrieved from https://www.halifax.ca/sites/default/files/documents/about-the-city/regional-community-planning/BeaverBankHammondsPlainsUpperSackville_LUB_Eff_February252017.pdf
- Halifax Regional Municipality. (1995; amended to 2017). Land Use By-Law for Planning Districts 1 and 3 (St. Margarets Bay). Retrieved from https://www.halifax.ca/sites/default/files/documents/about-the-city/regional-community-planning/PlanningDistricts1and3_LUB_eff_February252017.pdf
- Halifax Regional Municipality. (1995; amended to 2017). Land Use By-Law for Planning District 4 (Prospect). Retrieved from https://www.halifax.ca/sites/default/files/documents/about-the-city/regional-community-planning/PlanningDistrict4_LUB_Eff_February252017.pdf
- Halifax Regional Municipality. (1995; amended to 2017). Land Use By-Law for Planning District 5 (Chebucto Peninsula). Retrieved from https://www.halifax.ca/sites/default/files/documents/about-the-city/regional-community-planning/PlanningDistrict5LUB_Eff_Feb252017.pdf
- Halifax Regional Municipality. (1989; amended to 2017). Land Use By-Law for Planning Districts 8 & 9 (Lake Echo/Porters Lake). Retrieved from https://www.halifax.ca/sites/default/files/documents/about-the-city/regional-community-planning/PlanningDistricts8and9_LUB_Eff_February252017.pdf
- Halifax Regional Municipality. (1989; amended to 2018). Land Use By-Law for Planning Districts 14/17 (Shubenacadie Lakes). Retrieved from https://www.halifax.ca/sites/default/files/documents/business/planning-development/applications/PlanningDistricts14and17_LUB_Eff_March_3_2018_2.pdf
- Halifax Regional Municipality. (1994; amended to 2017). Land Use By-Law for Sackville. Retrieved from https://www.halifax.ca/sites/default/files/documents/business/planning-development/applications/Sackville_LUB_Eff_Dec_30_2017.pdf

Halifax Regional Municipality. (2002; amended to 2016). Land Use By-Law for Sackville Drive. Retrieved from https://www.halifax.ca/sites/default/files/documents/business/planning-development/SackvilleDrive_LUB_Effective_December%2017%202016.pdf

Halifax Regional Municipality. (1992; amended to 2017). Land Use By-Law for Timberlea/Lakeside/Beechville. Retrieved from https://www.halifax.ca/sites/default/files/documents/about-the-city/regional-community-planning/TimberleaLakesideBeechville_LUB.pdf

Halifax Regional Municipality. (2000; amended to 2016). Municipal Planning Strategy for Beaver Bank, Hammonds Plains and Upper Sackville. Retrieved from https://www.halifax.ca/sites/default/files/documents/about-the-city/regional-community-planning/BeaverBankHammondsPlainsUpperSackville_MPS_Eff_June252016.pdf

Halifax Regional Municipality. (1995; amended to 2015). Municipal Planning Strategy for Planning Districts 1 and 3 (St. Margarets Bay). Retrieved from https://www.halifax.ca/sites/default/files/documents/about-the-city/regional-community-planning/PlanningDistricts1and3_MPS.pdf

Halifax Regional Municipality. (1995; amended to 2015). Municipal Planning Strategy for Planning District 4 (Prospect). Retrieved from https://www.halifax.ca/sites/default/files/documents/about-the-city/regional-community-planning/PlanningDistrict4_MPS.pdf

Halifax Regional Municipality. (1995; amended to 2016). Municipal Planning Strategy for Planning District 5 (Chebucto Peninsula). Retrieved from https://www.halifax.ca/sites/default/files/documents/about-the-city/regional-community-planning/PlanningDistrict5_MPS.pdf

Halifax Regional Municipality. (1989; amended to 2006). Municipal Planning Strategy for Planning Districts 8 & 9 (Lake Echo/Porters Lake). Retrieved from https://www.halifax.ca/sites/default/files/documents/about-the-city/regional-community-planning/PlanningDistricts8and9_MPS.pdf

Halifax Regional Municipality. (1989; amended to 2016). Municipal Planning Strategy for Planning Districts 14/17 (Shubenacadie Lakes). Retrieved from https://www.halifax.ca/sites/default/files/documents/about-the-city/regional-community-planning/PlanningDistricts14and17_MPS.pdf

Halifax Regional Municipality. (1994; amended to 2016). Municipal Planning Strategy for Sackville. Retrieved from https://www.halifax.ca/sites/default/files/documents/about-the-city/regional-community-planning/Sackville_MPS_Eff_December172016.pdf

Halifax Regional Municipality. (1992; amended to 2017). Municipal Planning Strategy for Timberlea/Lakeside/Beechville. Retrieved from https://www.halifax.ca/sites/default/files/documents/about-the-city/regional-community-planning/TimberleaLakesideBeechville_MPS_0.pdf

Halifax Regional Municipality. (2002; amended to 2016). Secondary Planning Strategy for Sackville Drive. Retrieved from https://www.halifax.ca/sites/default/files/documents/business/planning-development/SackvilleDrive_SPS_Eff_December%2017%202016.pdf

Municipality of Argyle. (2000; amended to 2016). Municipality of Argyle Land Use By-Law.

Municipality of Clare. (2010). Municipal Planning Strategy: Municipality of Clare. Retrieved from https://www.clarenovascotia.com/images/docs/Municipal_Planning_Strategy_2010.pdf

Municipality of the County of Colchester. (2002; amended to 2017). Central Colchester Land Use Bylaw 2002. Retrieved from <https://www.colchester.ca/>

Municipality of the County of Colchester. (2002; amended to 2017). Central Colchester Municipal Planning Strategy 2002. Retrieved from <https://www.colchester.ca/>

Municipality of Cumberland. (2016). Municipality of Cumberland Land Use Bylaw.

Municipality of Cumberland. (2016). Municipality of Cumberland Municipal Planning Strategy. Retrieved from <https://www.cumberlandcounty.ns.ca/414-consolidated-municipal-planning-strategy/file.html>

Municipality of the County of Kings. (N/A; accessed 2018). Municipality of the County of Kings Municipal Planning Strategy. Retrieved from <http://www.countyofkings.ca/residents/planning/mps.aspx>

Municipality of the County of Kings. (N/A; accessed 2018). Municipality of the County of Kings Land Use By-law. Retrieved from <http://www.countyofkings.ca/residents/planning/lub.aspx>

Municipality of the County of Pictou. (2007). Municipality of the County of Pictou Land Use Bylaw: Wind Energy Developments.

Municipality of the County of Pictou. (2007). Municipality of the County of Pictou Municipal Planning Strategy: Wind Energy Development.

Municipality of the District of Barrington. (2013). Municipality of the District of Barrington Land Use Bylaw. Retrieved from <https://www.barringtonmunicipality.com/council/municipal-by-laws/1140-land-use-bylaw/file>

Municipality of the District of Barrington. (2013). Municipality of the District of Barrington Municipal Planning Strategy. Retrieved from <https://www.barringtonmunicipality.com/documents/municipal-documents/110-municipal-planning-strategy/file>

Municipality of the District of Chester. (1997; amended to 2017). Municipality of the District of Chester Land Use By-Law. Retrieved from <https://www.chester.ca/live/property-services/zoning-and-land-use>

Municipality of the District of Chester. (1997; amended to 2016). Municipality of the District of Chester Municipal Planning Strategy and Land Use By-Law and Subdivision By-Law. Retrieved from <https://www.chester.ca/live/property-services/zoning-and-land-use>

Municipality of the District of Clare. (2012). By-law # 27: Land Use By-law; Municipality of the District of Clare. Retrieved from https://www.clarenovascotia.com/images/docs/en/bylaws/By-Law_No_27_Land_Use.pdf

Municipality of the District of Digby. (2014). Conway Area Land Use By-law: Municipality of the District of Digby.

Municipality of the District of Guysborough. (2013). Municipality of the District of Guysborough Land Use Bylaw. Retrieved from <http://www.municipality.guysborough.ns.ca/sites/default/files/pdfs/LAND%20USE%20BYLAW.pdf>

Municipality of the District of Guysborough. (2013). Official Municipal Planning Strategy. Retrieved from <http://www.municipality.guysborough.ns.ca/sites/default/files/pdfs/MUNICIPAL%20PLANNING%20STRATEGY.pdf>

Municipality of the District of Lunenburg. (1999). Land Use By-Law: Lunenburg Municipal Industrial Zone, Oakhill.

Municipality of the District of Lunenburg. (2016). Land Use By-law for Princes Inlet & Area.

Municipality of the District of Lunenburg. (1999; amended to 2007). Municipality of the District of Lunenburg Municipal Planning Strategy.

Municipality of the District of Lunenburg. (2012; amended to 2017). Village of Hebbville Land Use By-law.

Municipality of the District of Lunenburg. (2003; amended to 2016). Oakland Land Use By-Law.

Municipality of the District of Lunenburg. (2005; amended to 2016). Riverport and District Land Use By-Law; Consolidated Edition.

Municipality of the District of Shelburne. (2015). Land Use Bylaw L-101. Retrieved from <https://www.municipalityofshelburne.ca/by-laws/377-municipal-planning-strategy-and-land-use-by-law-l-101/file.html>

Municipality of the District of Shelburne. (2015). Municipal Planning Strategy. Retrieved from <https://www.municipalityofshelburne.ca/by-laws/377-municipal-planning-strategy-and-land-use-by-law-l-101/file.html>

Municipality of the District of West Hants. (2008; amended to 2018). Municipality of the District of West Hants Land Use By-Law. Retrieved from <https://www.westhants.ca/planning/planning-documents/1630-west-hants-land-use-by-law-1/file.html>

Municipality of the District of West Hants. (2008; amended to 2017). Municipality of the District of West Hants Municipal Planning Strategy. Retrieved from <https://www.westhants.ca/planning/1635-west-hants-municipal-planning-strategy-1/file.html>

- Municipality of the District of Yarmouth. (2013). Municipality of the District of Yarmouth Land Use By-law. Retrieved from https://www.district.yarmouth.ns.ca/images/stories/PDF/dev/LUB_MPS/MODY_LUB_June24_2015.pdf
- Municipality of East Hants. (2016). Land Use Bylaw; East Hants Official Community Plan: Bylaw P-500. Retrieved from <https://www.easthants.ca/wp-content/uploads/2016/08/LUB-2016-Part-1-Administration.pdf>
- Municipality of East Hants. (2016). Municipal Planning Strategy; East Hants Official Community Plan: Bylaw P-400. Retrieved from <https://www.easthants.ca/wp-content/uploads/2017/09/2016-Municipal-Planning-Strategy.pdf>
- Pictou County. (2016). Inter-Municipal Planning Strategy for the Towns of New Glasgow, Pictou, Stellarton, Trenton and Westville. Retrieved from <http://www.townofpictou.ca/assets/PDFs/Town-Hall/Planning/IMPS-final.pdf>
- Pictou County. (2016). Towns of New Glasgow, Pictou, Stellarton, Trenton and Westville (Common) Land Use By-law. Retrieved from <http://www.townofpictou.ca/assets/PDFs/Town-Hall/Planning/LUB-final.pdf>
- Region of Queens Municipality. (2009). Region of Queens Municipality Land Use Bylaw. Retrieved from <http://www.regionofqueens.com/municipal-services/planning/land-use-planning/33-residents-and-council/planning/land-use?layout=blog>
- Region of Queens Municipality. (2009). Region of Queens Municipality Municipal Planning Strategy. Retrieved from <http://www.regionofqueens.com/municipal-services/planning/land-use-planning/33-residents-and-council/planning/land-use?layout=blog>
- Rural Cape Breton District Planning Commission. (2015). Central Richmond Plan Area Land Use By-Law: Municipality of the County of Richmond. Retrieved from http://www.edpc.ca/plandocs/central_ri/CR_LUB.pdf
- Rural Cape Breton District Planning Commission. (2015). Central Richmond Plan Area Municipal Planning Strategy: Municipality of the County of Richmond. Retrieved from http://www.edpc.ca/plandocs/central_ri/CR_MPS.pdf
- Town of Amherst. (2005; amended to 2015). Town of Amherst Land Use Bylaw: Bylaw P-2. Retrieved from https://www.amherst.ca/index.php?option=com_docman&view=list&layout=table&slug=by-laws&Itemid=327
- Town of Amherst. (2005; amended to 2017). Town of Amherst Municipal Planning Strategy: Bylaw P-1. Retrieved from https://www.amherst.ca/index.php?option=com_docman&view=download&alias=2386-p-1-municipal-planning-strategy-consolidated-with-amendments-to-20170626-1&category_slug=by-laws&Itemid=327

Town of Antigonish. (N/A; accessed 2018). Town of Antigonish Land Use By-law. Retrieved from <https://townofantigonish.ca/policies-bylaws/bylaws/481-land-use-by-law-1/file.html>

Town of Antigonish. (N/A; accessed 2018). Town of Antigonish Municipal Planning Strategy. Retrieved from <https://townofantigonish.ca/departments/238-plans-and-strategy-municipal-planning-strategy/file.html>

Town of Berwick. (2012). Town of Berwick Land Use By-law. Retrieved from <https://static1.squarespace.com/static/576ac8b046c3c42c9df14f62/t/57bb380759cc68160933b879/1471887367158/Approved+Land+Use+Bylaw+-+October+2012.pdf>

Town of Berwick. (2012). Town of Berwick Municipal Planning Strategy. Retrieved from <https://static1.squarespace.com/static/576ac8b046c3c42c9df14f62/t/57bb3841e4fcb59250ee9e2f/1471887428679/Approved+Municipal+Planning+Strategy+-+October+2012.pdf>

Town of Bridgewater. (2014). Land Use By-Law. Retrieved from <https://www.bridgewater.ca/document-library/planning/planning-documents/768-2014-land-use-by-law-zoning-map/file>

Town of Bridgewater. (2014). Municipal Planning Strategy. Retrieved from <https://www.bridgewater.ca/document-library/planning/planning-documents/767-2014-municipal-planning-strategy-maps/file>

Town of Clark's Harbour. (2013). Town of Clark's Harbour Land Use By-Law. Retrieved from <http://www.clarksharbour.com/landusebylaw.html>

Town of Digby. (2012). Town of Digby Land Use By-law. Retrieved from <https://www.digby.ca/planning-and-development/82-land-use-by-law-may-2012-approved/file.html>

Town of Digby. (2012). Town of Digby Municipal Planning Strategy. Retrieved from <https://www.digby.ca/planning-and-development/68-municipal-planning-strategy-may-2012-approved/file.html>

Town of Kentville. (2001; amended to 2006). Land Use Bylaw. Retrieved from <http://kentville.ca/wp-content/uploads/2012/12/Land-Use-By-Law.pdf>

Town of Kentville. (2001). Municipal Planning Strategy. Retrieved from <http://kentville.ca/wp-content/uploads/2012/12/Municipal-Planning-Strategy.pdf>

Town of Lockeport Planning Advisory Committee. (1986). The Town of Lockeport Land Use By-Law. Retrieved from <http://www.lockeport.ns.ca/docs/landusebylaw.pdf>

Town of Lunenburg. (2012; amended to 2015). Town of Lunenburg Land-Use By-Law. Retrieved from https://www.explorelunenburg.ca/images/Land_Use_By-law.pdf

Town of Lunenburg. (1996; amended to 2013). Town of Lunenburg Municipal Planning Strategy and Land Use By-Law. Retrieved from https://www.explorelunenburg.ca/index.php?option=com_docman&view=download&alias=249-municipal-planning-strategy&category_slug=planning-and-development&Itemid=893

Town of Mahone Bay. (2008; amended to 2014). Town of Mahone Bay Land Use By-Law. Retrieved from <https://www.townofmahonebay.ca/847-land-use-by-law-2017/file.html>

Town of Mahone Bay. (2008; amended to 2014). Town of Mahone Bay Municipal Planning Strategy. Retrieved from <https://www.townofmahonebay.ca/municipal-documents-1/613-municipal-planning-strategy-oct-2014/file.html>

Town of Mulgrave. (N/A; accessed 2018). By-Law # 32 Town of Mulgrave Land Use By-Law. Retrieved from https://www.townofmulgrave.ca/component/option,com_docman/Itemid,72/

Town of Oxford. (2009). Town of Oxford Land Use Bylaw. Retrieved from <https://www.town.oxford.ns.ca/by-laws-1/502-oxford-land-use-bylaw-2009/file.html>

Town of Oxford. (2009). Town of Oxford Municipal Planning Strategy: 2009-2029. Retrieved from <https://www.town.oxford.ns.ca/by-laws-1/500-oxford-municipal-planning-strategy-2009/file.html>

Town of Shelburne. (1988; amended to 2017). Town of Shelburne Land Use By-Law. Retrieved via email.

Town of Shelburne. (1988; amended to 2017). Town of Shelburne Municipal Planning Strategy. Retrieved via email.

Town of Stewiacke. (N/A; accessed 2018). Town of Stewiacke Land Use Bylaw.

Town of Stewiacke. (N/A; accessed 2018). Town of Stewiacke Municipal Planning Strategy.

Town of Truro. (2010; amended to 2015). Town of Truro Land Use By-law. Retrieved from <https://www.truro.ca/pln/161-land-use-by-law-1/file.html>

Town of Truro. (2010; amended to 2015). Town of Truro Municipal Planning Strategy. Retrieved from <https://www.truro.ca/pln/166-municipal-planning-strategy-1/file.html>

Town of Windsor. (2005; amended to 2012). Town of Windsor Land Use By-Law. Retrieved from <https://www.town.windsor.ns.ca/planning-1/872-windsor-land-use-bylaw-official-version-july-2012/file.html>

Town of Windsor. (2005; amended to 2012). Town of Windsor Municipal Planning Strategy. Retrieved from <https://www.town.windsor.ns.ca/planning-1/871-windsor-municipal-planning-strategy-official-version-july-12/file.html>

Town of Wolfville. (2008; amended to 2016). Town of Wolfville Land Use By-Law. Retrieved from https://www.wolfville.ca/images/Community_Development/LUB%20-%20as%20amended%20January%2026,%202016.pdf

Town of Yarmouth. (2016). Municipal Planning Strategy. Retrieved from <https://www.townofyarmouth.ca/municipal-planning-strategy.html>

Town of Yarmouth. (2016). Town of Yarmouth Land Use By-law. Retrieved from <https://www.townofyarmouth.ca/land-use-by-law.html>

Data

- Cape Breton Regional Municipality. (n.d.). Land Use Bylaw of the Cape Breton Regional Municipality Zoning. Cape Breton Regional Municipality. Sydney, N.S. Retrieved October 23, 2017.
- Eastern District Planning Commission. (2015). Zoning - Inverness, Richmond, Victoria, Antigonish (IRVA), & Port Hawkesbury. Eastern District Planning Commission. Port Hawkesbury, N.S. Retrieved December 18, 2017.
- EATLab. (2018). Agricultural Land Identification Project: Update Version - November 2017. Environment and Agriculture Technology Laboratory, Nova Scotia Community College, Middleton, NS. Retrieved December 12, 2017.
- Government of Nova Scotia. (2015). Delimiter Lines. Nova Scotia Topographic Database, Nova Scotia. Retrieved March 19, 2018.
- Government of Nova Scotia, Service Nova Scotia – Geographic Information Services. (2017). Nova Scotia Property Records Database. Halifax, N.S. Retrieved October 3, 2017.
- Government of Nova Scotia, Department of Natural Resources. (2016). Forest Interpretation Data Layer – Cycle 1. N.S Dept. of Natural Resources, Forestry Division, Truro, N.S. Retrieved December 27, 2017.
- Government of Nova Scotia, Department of Natural Resources. (2016). Forest Interpretation Data Layer – Current Data Updated July 2017. N.S Dept. of Natural Resources, Forestry Division, Truro, N.S. Retrieved December 27, 2017.
- Government of Nova Scotia, Department of Municipal Affairs. (2017). Municipality and Village Boundaries. Nova Scotia Topographic Database, Nova Scotia. Retrieved November 9, 2017.
- Government of Nova Scotia, Resource Stewardship Branch, Department of Agriculture and Marketing. (1998). ALIP: Agricultural Land Identification Program. Department of Agriculture, Nova Scotia. Retrieved September 27, 2017.
- Halifax Open Data. (2017). Zoning Boundaries. Halifax Regional Municipality. Halifax, N.S. Retrieved February 8, 2018.
- Landmark Geographic Solutions Inc. (n.d.). Municipality of the Town of Annapolis Royal & Municipality of the Town of Middleton Zoning. Landmark Geographic Solutions Inc. Kingston, N.S. Retrieved March 6, 2018.
- Landmark Geographic Solutions Inc. (n.d.). Municipality of the Town of Berwick Zoning. Landmark Geographic Solutions Inc. Kingston, N.S. Retrieved March 19, 2018.

Landmark Geographic Solutions Inc. (n.d.). Municipality of the Town of Stewiacke Zoning. Landmark Geographic Solutions Inc. Kingston, N.S. Retrieved February 28, 2018.

Municipality of Kings County. (n.d.). Land Use Bylaw of the Municipality of the County of Kings Zoning. Municipality of Kings County. Kentville, N.S. Retrieved September 15, 2018.

Municipality of the County of Annapolis. (n.d.). Various Secondary Plan Area Zoning. Municipality of the County of Annapolis. Annapolis Royal, N.S. Retrieved December 12, 2017.

Municipality of the County of Colchester. (n.d.) Central Colchester and Tatamagouche Zoning. Municipality of the County of Colchester. Truro, N.S. Retrieved November 29, 2017.

Municipality of the District of Chester. (n.d.). Municipality of the District of Chester Land Use By-law & Chester Village Area Revised Land Use By-law Zoning. Municipality of the District of Chester. Chester, N.S. Retrieved December 8, 2017.

Municipality of the District of Chester. (n.d.). Town of Mahone Bay Land Use By-Law Zoning. Municipality of the District of Chester. Chester, N.S. Retrieved March 19, 2017.

Municipality of the District of Digby. (2014). Conway Zoning. Municipality of the District of Digby Retrieved February 13, 2018

Municipality of the District of Digby. (2015). Wellfield Zoning. Municipality of the District of Digby Retrieved February 13, 2018.

Municipality of the District of East Hants. (2016). East Hants Zoning. Municipality of East Hants. Elmsdale, N.S. Retrieved November 14, 2017.

Municipality of the District of Guysborough. (n.d.). Municipality of the District of Guysborough Land Use Bylaw Zoning. Municipality of the District of Guysborough. Mulgrave, N.S. Retrieved December 13, 2017.

Municipality of the District of Lunenburg. (n.d.) Various Secondary Plan Areas Zoning. Municipality of the District of Lunenburg. Bridgewater, N.S. Retrieved November 24, 2017.

Municipality of the Region of Queens. (n.d.). Region of Queens Municipality Land Use Bylaw Zoning. Municipality of the Region of Queens. Liverpool, N.S. Retrieved December 6, 2017.

Municipality of the District of West Hants. (2008). West Hants Zoning. Municipality of the District of West Hants. Windsor, N.S. Retrieved January 8, 2018.

Municipality of the Town of Amherst. (n.d.). Town of Amherst Land Use Bylaw- Bylaw P-2 Zoning. Amherst, N.S. Retrieved February 28, 2018.

Municipality of the Town of Antigonish. (2018). Town of Antigonish Zoning. Municipality of the Town of Antigonish. Antigonish, N.S. Retrieved March 19, 2018.

Municipality of the Town of Bridgewater. (2014). Town of Bridgewater Zoning. Municipality of the Town of Bridgewater. Bridgewater, N.S. Retrieved October 20, 2017.

Municipality of the Town of Kentville. (n.d.). Kentville Zoning Official. Municipality of the Town of Kentville. Retrieved December 5, 2017.

Municipality of the Town of Windsor. (n.d.). Town of Windsor Land Use By-Law Zoning. Municipality of the Town of Windsor. Windsor, N.S. Retrieved March 15, 2018.

Municipality of the Town of Wolfville. (n.d.). Wolfville Zoning. Municipality of the Town of Wolfville. Wolfville, N.S. Retrieved December 12, 2017.

Municipality of the Town of Yarmouth. (n.d.). Town of Yarmouth Current LUB zoning. Municipality of the Town of Yarmouth. Yarmouth, N.S. Retrieved February 28, 2018.

Yarmouth-Argyle-Barrington District Planning Commission. (2013). Municipality of the District of Yarmouth Zoning. Tusket, N.S. Retrieved December 6, 2017.

Yarmouth-Argyle-Barrington District Planning Commission. (2014). Municipality of the District of Argyle Zoning. Tusket, N.S. Retrieved December 6, 2017.

Municipality of the Town of New Glasgow Engineering Department. (n.d.) Combined Zones Region – Towns of New Glasgow, Pictou, Stellarton, Trenton, and Westville. Municipality of the Town of New Glasgow. New Glasgow, N.S. Retrieved March 6, 2018.

Report

Government of Nova Scotia. (2000) *Local government resource handbook October 2000*. Service Nova Scotia and Municipal Relations. Retrieved from <https://novascotia.ca/dma/pdf/mun-local-government-resource-handbook-5-3.pdf>

University of Wisconsin-Madison Libraries. (n.d.). *Research guides: mapping and geographic information systems (GIS): What is GIS?*. Retrieved from <https://researchguides.library.wisc.edu/GIS>

Appendix

Data Dictionary

Filename: Farm_LUP_AgUse_UT83

Data Format: File Geodatabase

Data Type: Vector

Coordinate System: NAD_1983_CSRS_UTM_Zone_20N

Description: The polygon data shows land use bylaws, zoning, and agricultural use within Nova Scotia. The results of an analysis lead to a plausibility score of lands available for agricultural use in the near to mid-term based on municipal land use planning and agricultural land conversion over time.

Column Name	Data Type	Length	Description of field
Score	Double		Score calculated for an analysis based on land use zoning and agricultural use over time. Score represents a range of plausible outcomes for land being available for agriculture in the short to mid-term future on a scale of 0-1.
Municipality	String	100	Name of municipality
LUB	String	50	Name of the land use bylaw
Amended	Date		Date of last amendment to the land use bylaw used for this analysis
Accessed	Date		Date the land use bylaw was accessed for this analysis
Zone_Code	String	50	Land use zoning code assigned to the zoning area
Agri_Regulation	String	50	Describes agricultural permissions in place according to the land use bylaw.
Agri_Use	String	50	Shows agricultural land use over time. Derived from ALIP and NSDNR Forest Inventory data.
Change_Ag_Zone	String	50	Describes the change in agricultural use within a given zone over time comparing ALIP and NSDNR Forest Inventory data.

Glossary of Terms

Agriculture: Multiple definitions of agriculture were used during this analysis due to differing definitions used by each municipality and within the agricultural lands data acquired for this project. When defining agriculture for the analysis, the definitions were interpreted in the context of this project for each planning document and dataset used.

Amendment: An amendment to an existing land use zone is a change of one zone to another in a specified area and approved by municipal council. Amendments can also be changes to the municipal planning strategy or land use by-law when council decides to update a part of an existing land use planning document.

Crop agriculture: Multiple definitions of agriculture were used during this analysis due to differing definitions used by each municipality and dataset. Where crop and orchard uses were included in the definition of agriculture, the analysis interpreted that definition to include crop agriculture, and by extension, grape growing. For example, the Nova Scotia Forest Inventory data defines agriculture as “any hay field, pasture, tilled crop, or orchard which contains no merchantable species.”; whereas, the Municipality of the County of Kings defines agricultural use as “the utilizing of land, buildings or structures to raise crops or animals or fowl and includes the harboring or keeping of livestock regardless of its stage of development.”

Geographical Information Systems (GIS): A geographic information system (GIS) is a system designed to capture, store, manipulate, analyze, manage, and present all types of geographical data. (University of Wisconsin-Madison Libraries, n.d.)

Land-Use By-law: Establishes the land-use zones which are set out with a number of permitted land-uses in each zone (some zones list the uses that are prohibited rather than the permitted uses). They also include provisions governing such things as building height, setbacks, yard sizes, lot sizes, lot frontage, site plan approval criteria and items that may be addressed in site planning and other development standards for the respective zones established. Such by-laws are accompanied by *Zoning* maps which graphically show how the lands within the municipality are zoned. (Government of Nova Scotia, 2000)

Municipal Planning Strategy: A municipal planning strategy is a policy that outlines the vision for the municipality. It informs the municipalities land use by-law, future land use map, and zoning map. Furthermore, council decisions must follow the intent of the municipal planning strategy.

Zoning: Land use planning tool used to designate permitted land uses onto certain parcels of land by local governments. Those parcels of land are called zones. Local governments designate various zones for different uses of land, such as industrial, agricultural, commercial, or residential. Zoning can also dictate what types of activity are allowed such as crop agriculture but not raising animals. (Government of Nova Scotia, 2000)

Disclaimer

The land use planning and agricultural land use analysis was conducted using zoning data current to the amendment date of the land use by-law listed. Amendments and changes to land use by-laws following that date are not accounted for.

Dalhousie University disclaims any responsibility for the quality of the data. Quality of data includes location precision, accuracy, timeliness, completeness or correctness of the data. Quality of data includes attribute information precision, accuracy, timeliness, completeness or correctness of the data. Individuals should always contact a municipality for the most up to date zoning maps and regulations.

In no event shall Dalhousie University become liable to users of these data, or any other party, for any loss or damages, consequential or otherwise, including but not limited to time, money, or goodwill, arising from the use, operation or modification of the data. In using these data, users further agree to indemnify, defend, and hold harmless Dalhousie University for any and all liability of any nature arising out of or resulting from the lack of data quality. Quality of data includes location precision, accuracy, timeliness, completeness or correctness of the data. Quality of data includes attribute information precision, accuracy, timeliness, completeness or correctness of the data. Individuals should always contact a municipality for the most up to date zoning maps and regulations.

Dalhousie University makes no representation or warranties, either express or implied, regarding data or other results arising from information produced from this research. Dalhousie University specifically disclaims any implied warranty of non-infringement or merchantability or fitness of particular purpose and the University will, in no event be liable for any loss of profits, be they direct, consequential, incidental, or special or other similar damages arising from any defect, error, or failure to perform, even if the University has been advised of possibility of such damages.

AgriRisk Project: Municipality of County of Annapolis - Land Use By-laws Matrix

Municipality	By-law	Ammended to	Date Accessed	Zone	Policy Score	Permits New Agricultural Use	Comments
County of Annapolis	County of Annapolis Land use by-law	Dec-11	01-Dec-17	GD	0.5	Y	All uses are permitted except large wind turbines
County of Annapolis	County of Annapolis Land use by-law	Dec-11	01-Dec-17	WR	0.5	Y	All uses are permitted, only restricts wind turbines
County of Annapolis	County of Annapolis Land use by-law	Dec-11	01-Dec-17	HHWR	0.5	Y	All uses are permitted, only restricts wind turbines
County of Annapolis	Cornwallis Park Land use by-law	May-14	01-Dec-17	CPR-1	0	N	
County of Annapolis	Cornwallis Park Land use by-law	May-14	01-Dec-17	CPR-2	0	N	
County of Annapolis	Cornwallis Park Land use by-law	May-14	01-Dec-17	CPR-3	0	N	
County of Annapolis	Cornwallis Park Land use by-law	May-14	01-Dec-17	IND-1	0	N	
County of Annapolis	Cornwallis Park Land use by-law	May-14	01-Dec-17	BD	0	N	
County of Annapolis	Cornwallis Park Land use by-law	May-14	01-Dec-17	C-1	0	N	
County of Annapolis	Cornwallis Park Land use by-law	May-14	01-Dec-17	IND-2	0.5	Y	Agriculture related uses.
County of Annapolis	Cornwallis Park Land use by-law	May-14	01-Dec-17	OS	0	N	
County of Annapolis	East End Area Land use by-law	Aug-12	01-Dec-17	R-1	0	N	
County of Annapolis	East End Area Land use by-law	Aug-12	01-Dec-17	R-2	0	N	
County of Annapolis	East End Area Land use by-law	Aug-12	01-Dec-17	R-3	0	N	
County of Annapolis	East End Area Land use by-law	Aug-12	01-Dec-17	R-4	0	N	
County of Annapolis	East End Area Land use by-law	Aug-12	01-Dec-17	R-5	0.5	Y	Agriculture permitted amongst other uses
County of Annapolis	East End Area Land use by-law	Aug-12	01-Dec-17	R-6	0.5	Y	Agriculture permitted amongst other uses
County of Annapolis	East End Area Land use by-law	Aug-12	01-Dec-17	R-7	0	N	
County of Annapolis	East End Area Land use by-law	Aug-12	01-Dec-17	C-1	0	N	Existing agricultural uses permitted
County of Annapolis	East End Area Land use by-law	Aug-12	01-Dec-17	C-2	0	N	Existing agricultural uses permitted
County of Annapolis	East End Area Land use by-law	Aug-12	01-Dec-17	IND1	0.5	Y	Agriculture permitted amongst other uses. No dwellings.
County of Annapolis	East End Area Land use by-law	Aug-12	01-Dec-17	IND2	0.5	Y	Agricultural related uses
County of Annapolis	East End Area Land use by-law	Aug-12	01-Dec-17	AG	1	Y	Prioritizes agricultural use. Does allow for new dwellings under conditions.
County of Annapolis	East End Area Land use by-law	Aug-12	01-Dec-17	OS	0.5	Y	Agriculture permitted amongst other uses but not within 100 m of a municipal wellhead. No structure.
County of Annapolis	East End Area Land use by-law	Aug-12	01-Dec-17	I	0	N	

County of Annapolis continued on next page.

County of Annapolis	Lake Cady Water Supply Area Land use by-law	Nov-04	01-Dec-17	LCR-1	0	N	Agriculture permitted amongst other uses. No disturbance of vegetation and soil within 15m of water feature
County of Annapolis	Lake Cady Water Supply Area Land use by-law	Nov-04	01-Dec-17	LCR-2	0	N	Agriculture permitted amongst other uses. No disturbance of vegetation and soil within 30m of water feature
County of Annapolis	Lake Cady Water Supply Area Land use by-law	Nov-04	01-Dec-17	LCR-3	0	N	Agriculture permitted amongst other uses. No disturbance of vegetation and soil within 30m of water feature
County of Annapolis	Lake Cady Water Supply Area Land use by-law	Nov-04	01-Dec-17	LCR-4	0	N	Agriculture permitted amongst other uses. No disturbance of vegetation and soil within 30m of water feature
County of Annapolis	Lawrencetown Water Supply Land Use Area Land Use By-law	Jul-08	01-Dec-17	LWS-1	0	N	
County of Annapolis	Lawrencetown Water Supply Land Use Area Land Use By-law	Jul-08	01-Dec-17	LWS-2	0	N	
County of Annapolis	Lawrencetown Water Supply Land Use Area Land Use By-law	Jul-08	01-Dec-17	LWS-3	0	N	
County of Annapolis	Lawrencetown Water Supply Land Use Area Land Use By-law	Jul-08	01-Dec-17	LB-4	0	N	
County of Annapolis	Lawrencetown Water Supply Land Use Area Land Use By-law	Jul-08	01-Dec-17	LG-5	0.5	Y	All uses not listed as prohibited are permitted
County of Annapolis	Upper Clements Land use by-law	Nov-98	01-Dec-17	R-1	0	N	
County of Annapolis	Upper Clements Land use by-law	Nov-98	01-Dec-17	R-2	0.5	Y	Agriculture is permitted amongst other uses
County of Annapolis	Upper Clements Land use by-law	Nov-98	01-Dec-17	R-4	0	N	
County of Annapolis	Upper Clements Land use by-law	Nov-98	01-Dec-17	C-1	0	N	
County of Annapolis	Upper Clements Land use by-law	Nov-98	01-Dec-17	C-2	0.5	Y	Agriculture is permitted amongst other uses
County of Annapolis	Upper Clements Land use by-law	Nov-98	01-Dec-17	AG	1	Y	Agriculture and supporting uses are prioritized. Existing residential are permitted
County of Annapolis	Town of Bridgetown Land use by-law	Nov-13	01-Dec-17	R1	0	N	
County of Annapolis	Town of Bridgetown Land use by-law	Nov-13	01-Dec-17	R2	0	N	
County of Annapolis	Town of Bridgetown Land use by-law	Nov-13	01-Dec-17	R3	0	N	Limited agriculture is permitted amongst other uses. Restricted.
County of Annapolis	Town of Bridgetown Land use by-law	Nov-13	01-Dec-17	RRA	0	N	
County of Annapolis	Town of Bridgetown Land use by-law	Nov-13	01-Dec-17	C1	0	N	
County of Annapolis	Town of Bridgetown Land use by-law	Nov-13	01-Dec-17	C2	0	N	
County of Annapolis	Town of Bridgetown Land use by-law	Nov-13	01-Dec-17	CCD	0	N	
County of Annapolis	Town of Bridgetown Land use by-law	Nov-13	01-Dec-17	I1	0	N	
County of Annapolis	Town of Bridgetown Land use by-law	Nov-13	01-Dec-17	S/U	0	N	
County of Annapolis	Town of Bridgetown Land use by-law	Nov-13	01-Dec-17	M1	0	N	
County of Annapolis	Town of Bridgetown Land use by-law	Nov-13	01-Dec-17	BD	0	N	Permits crop agriculture as an accessory use.
County of Annapolis	Town of Bridgetown Land use by-law	Nov-13	01-Dec-17	O1	0	N	
County of Annapolis	Town of Bridgetown Land use by-law	Nov-13	01-Dec-17	O2	0.5	Y	Agricultural uses that don't require a permanent building are permitted
County of Annapolis	Town of Bridgetown Land use by-law	Nov-13	01-Dec-17	O3	0	N	
County of Annapolis	Town of Bridgetown Land use by-law	Nov-13	01-Dec-17	MH	0	N	

AgriRisk Project: Municipality of the County of Antigonish - Land Use Planning Matrix

Municipality	By-law	Amended to	Date Accessed	Zone	Policy Score	New Agricultural Use is Permitted	Comments
County of Antigonish	Antigonish Fringe Land Use By-law	Jan-15	28-Nov-17	RG-1	0.5	Y	Agriculture is permitted amongst other uses
County of Antigonish	Antigonish Fringe Land Use By-law	Jan-15	28-Nov-17	RR-1	0	N	
County of Antigonish	Antigonish Fringe Land Use By-law	Jan-15	28-Nov-17	RCDD-1	0	N	
County of Antigonish	Antigonish Fringe Land Use By-law	Jan-15	28-Nov-17	MHP-1	0	N	
County of Antigonish	Antigonish Fringe Land Use By-law	Jan-15	28-Nov-17	TC-1	0	N	
County of Antigonish	Antigonish Fringe Land Use By-law	Jan-15	28-Nov-17	R-1	0	Y	Existing agricultural use permitted
County of Antigonish	Antigonish Fringe Land Use By-law	Jan-15	28-Nov-17	R-2	0	N	
County of Antigonish	Antigonish Fringe Land Use By-law	Jan-15	28-Nov-17	C-1	0	N	
County of Antigonish	Antigonish Fringe Land Use By-law	Jan-15	28-Nov-17	C-2	0	N	
County of Antigonish	Antigonish Fringe Land Use By-law	Jan-15	28-Nov-17	C-3	0	N	
County of Antigonish	Antigonish Fringe Land Use By-law	Jan-15	28-Nov-17	I-1	0	N	
County of Antigonish	Antigonish Fringe Land Use By-law	Jan-15	28-Nov-17	I-2	0	N	
County of Antigonish	Antigonish Fringe Land Use By-law	Jan-15	28-Nov-17	I-3	0	N	
County of Antigonish	Antigonish Fringe Land Use By-law	Jan-15	28-Nov-17	F-1	0.5	Y	Agriculture that does not require a structure is permitted
County of Antigonish	Antigonish Fringe Land Use By-law	Jan-15	28-Nov-17	WS-1	0	N	Existing uses permitted
County of Antigonish	Antigonish Fringe Land Use By-law	Jan-15	28-Nov-17	O-1	0	N	
County of Antigonish	Central Antigonish Land Use By-law	Not listed	28-Nov-17	RD-1	0.5	Y	Agriculture is permitted amongst other uses
County of Antigonish	Central Antigonish Land Use By-law	Not listed	28-Nov-17	RI-1	0	N	
County of Antigonish	Central Antigonish Land Use By-law	Not listed	28-Nov-17	RC-1	0	N	
County of Antigonish	Central Antigonish Land Use By-law	Not listed	28-Nov-17	TC-1	0	N	
County of Antigonish	Central Antigonish Land Use By-law	Not listed	28-Nov-17	RCDD-1	0	N	
County of Antigonish	Central Antigonish Land Use By-law	Not listed	28-Nov-17	HR-1	0	Y	Existing agricultural use permitted
County of Antigonish	Central Antigonish Land Use By-law	Not listed	28-Nov-17	HR-2	0	N	
County of Antigonish	Central Antigonish Land Use By-law	Not listed	28-Nov-17	HMHP-1	0	N	
County of Antigonish	Central Antigonish Land Use By-law	Not listed	28-Nov-17	HC-1	0	N	
County of Antigonish	Central Antigonish Land Use By-law	Not listed	28-Nov-17	HHC-1	0	N	
County of Antigonish	Central Antigonish Land Use By-law	Not listed	28-Nov-17	HI-1	0	N	

County of Antigonish continued on next page.

County of Antigonish	Land Use By-law for the Eastern Antigonish County Planning Area	Mar-07	29-Nov-17	R-1	0.5	Y	Agriculture is permitted amongst other uses
County of Antigonish	Land Use By-law for the Eastern Antigonish County Planning Area	Mar-07	29-Nov-17	RS-1	0.5	Y	Agriculture is permitted amongst other uses
County of Antigonish	Land Use By-law for the Eastern Antigonish County Planning Area	Mar-07	29-Nov-17	R-2	0	N	
County of Antigonish	Land Use By-law for the Eastern Antigonish County Planning Area	Mar-07	29-Nov-17	MH-1	0	N	
County of Antigonish	Land Use By-law for the Eastern Antigonish County Planning Area	Mar-07	29-Nov-17	C-1	0	N	
County of Antigonish	Land Use By-law for the Eastern Antigonish County Planning Area	Mar-07	29-Nov-17	I-1	0.5	Y	Agriculture is permitted amongst other uses
County of Antigonish	Land Use By-law for the Eastern Antigonish County Planning Area	Mar-07	29-Nov-17	CN-1	0	Y	Only grazing and pasturing permitted
County of Antigonish	Land Use By-law for the Eastern Antigonish County Planning Area	Mar-07	29-Nov-17	IS-1	0.5	Y	Agriculture is permitted amongst other uses
County of Antigonish	Keppoch Beaver Mountain Plan Area Land Use By-law	Mar-07	29-Nov-17	RD-1	0.5	Y	Agriculture is permitted amongst other uses
County of Antigonish	Keppoch Beaver Mountain Plan Area Land Use By-law	Mar-07	29-Nov-17	TC-1	0	N	
County of Antigonish	Keppoch Beaver Mountain Plan Area Land Use By-law	Mar-07	29-Nov-17	NRP	0	N	

AgriRisk Project: Municipality of the County of Colchester - Land Use Planning Matrix

Municipality	By-law	Amended to	Date Accessed	Zone	Policy Score	Permits New Agricultural Use	Comments
County of Colchester	Central Colchester Land use bylaw Chapter 40	Jul-17	09-Dec-17	R-1	0	N	
County of Colchester	Central Colchester Land use bylaw Chapter 40	Jul-17	09-Dec-17	R-2	0	N	
County of Colchester	Central Colchester Land use bylaw Chapter 40	Jul-17	09-Dec-17	R-2C	0	N	
County of Colchester	Central Colchester Land use bylaw Chapter 40	Jul-17	09-Dec-17	R-3	0	N	
County of Colchester	Central Colchester Land use bylaw Chapter 40	Jul-17	09-Dec-17	R-4	0	N	
County of Colchester	Central Colchester Land use bylaw Chapter 40	Jul-17	09-Dec-17	C-1	0	N	
County of Colchester	Central Colchester Land use bylaw Chapter 40	Jul-17	09-Dec-17	C-2	0	N	
County of Colchester	Central Colchester Land use bylaw Chapter 40	Jul-17	09-Dec-17	C-3	0	N	
County of Colchester	Central Colchester Land use bylaw Chapter 40	Jul-17	09-Dec-17	C-4	0	N	
County of Colchester	Central Colchester Land use bylaw Chapter 40	Jul-17	09-Dec-17	M	0	N	
County of Colchester	Central Colchester Land use bylaw Chapter 40	Jul-17	09-Dec-17	I	0	N	
County of Colchester	Central Colchester Land use bylaw Chapter 40	Jul-17	09-Dec-17	P-1	0	N	
County of Colchester	Central Colchester Land use bylaw Chapter 40	Jul-17	09-Dec-17	E-1	0.5	Y	Permitted without a dev. Permit unless building a structure.
County of Colchester	Central Colchester Land use bylaw Chapter 40	Jul-17	09-Dec-17	E-2	0.5	Y	Permitted without a dev. Permit unless building a structure.
County of Colchester	Central Colchester Land use bylaw Chapter 40	Jul-17	09-Dec-17	E-3	0	N	
County of Colchester	Central Colchester Land use bylaw Chapter 40	Jul-17	09-Dec-17	E-4	0	N	
County of Colchester	Central Colchester Land use bylaw Chapter 40	Jul-17	09-Dec-17	E-5	0	N	
County of Colchester	Central Colchester Land use bylaw Chapter 40	Jul-17	09-Dec-17	RG	0.5	Y	Permitted without a dev. Permit unless building a structure.
County of Colchester	Central Colchester Land use bylaw Chapter 40	Jul-17	09-Dec-17	RM	0	N	
County of Colchester	Tatamagouche Village Land Use Bylaw	Oct-01	09-Dec-17	VR-1	0.5	Y	Non-intensive agricultural use permitted
County of Colchester	Tatamagouche Village Land Use Bylaw	Oct-01	09-Dec-17	VC-1	0	N	
County of Colchester	Tatamagouche Village Land Use Bylaw	Oct-01	09-Dec-17	VC -2	0	N	
County of Colchester	Tatamagouche Village Land Use Bylaw	Oct-01	09-Dec-17	I	0	N	

AgriRisk Project: Municipality of the County of Cumberland - Land Use Planning Matrix

Municipality	By-law	Amended to	Date Accessed	Zone	Policy Score	Permits New Agricultural Use	Comments
County of Cumberland	Municipality of Cumberland Land Use Bylaw Consolidated Copy with All Amendments	Jun-15	23-Nov-17	G	0.5	Y	Agriculture is permitted amongst other uses
County of Cumberland	Municipality of Cumberland Land Use Bylaw Consolidated Copy with All Amendments	Jun-15	23-Nov-17	CEM	0	N	
County of Cumberland	Municipality of Cumberland Land Use Bylaw Consolidated Copy with All Amendments	Jun-15	23-Nov-17	U	0	N	
County of Cumberland	Municipality of Cumberland Land Use Bylaw Consolidated Copy with All Amendments	Jun-15	23-Nov-17	NT1	0	N	
County of Cumberland	Municipality of Cumberland Land Use Bylaw Consolidated Copy with All Amendments	Jun-15	23-Nov-17	NT2	0	N	
County of Cumberland	Municipality of Cumberland Land Use Bylaw Consolidated Copy with All Amendments	Jun-15	23-Nov-17	NT3	0	Y	Existing agricultural uses permitted
County of Cumberland	Municipality of Cumberland Land Use Bylaw Consolidated Copy with All Amendments	Jun-15	23-Nov-17	MeB1	0	N	
County of Cumberland	Municipality of Cumberland Land Use Bylaw Consolidated Copy with All Amendments	Jun-15	23-Nov-17	MeB2	0	N	
County of Cumberland	Municipality of Cumberland Land Use Bylaw Consolidated Copy with All Amendments	Jun-15	23-Nov-17	MeB3	0.5	Y	Agriculture is permitted amongst other uses
County of Cumberland	Municipality of Cumberland Land Use Bylaw Consolidated Copy with All Amendments	Jun-15	23-Nov-17	ML1	0	N	
County of Cumberland	Municipality of Cumberland Land Use Bylaw Consolidated Copy with All Amendments	Jun-15	23-Nov-17	ML2	0	N	
County of Cumberland	Municipality of Cumberland Land Use Bylaw Consolidated Copy with All Amendments	Jun-15	23-Nov-17	ML2A	0	N	
County of Cumberland	Municipality of Cumberland Land Use Bylaw Consolidated Copy with All Amendments	Jun-15	23-Nov-17	ML3	0.5	Y	Agriculture is permitted amongst other uses
County of Cumberland	Municipality of Cumberland Land Use Bylaw Consolidated Copy with All Amendments	Jun-15	23-Nov-17	R-1	0	N	
County of Cumberland	Municipality of Cumberland Land Use Bylaw Consolidated Copy with All Amendments	Jun-15	23-Nov-17	R-2	0	Y	Existing agricultural uses permitted
County of Cumberland	Municipality of Cumberland Land Use Bylaw Consolidated Copy with All Amendments	Jun-15	23-Nov-17	RR	0.5	Y	Agriculture is permitted amongst other uses
County of Cumberland	Municipality of Cumberland Land Use Bylaw Consolidated Copy with All Amendments	Jun-15	23-Nov-17	C-1	0	Y	Existing agricultural uses permitted
County of Cumberland	Municipality of Cumberland Land Use Bylaw Consolidated Copy with All Amendments	Jun-15	23-Nov-17	General Residential	0.5	Y	Agriculture is permitted amongst other uses
County of Cumberland	Municipality of Cumberland Land Use Bylaw Consolidated Copy with All Amendments	Jun-15	23-Nov-17	Community Residential	0	N	
County of Cumberland	Municipality of Cumberland Land Use Bylaw Consolidated Copy with All Amendments	Jun-15	23-Nov-17	Community Commercial	0	N	
County of Cumberland	Municipality of Cumberland Land Use Bylaw Consolidated Copy with All Amendments	Jun-15	23-Nov-17	Institutional	0	N	
County of Cumberland	Municipality of Cumberland Land Use Bylaw Consolidated Copy with All Amendments	Jun-15	23-Nov-17	Village Residential	0.5	Y	Agriculture is permitted amongst other uses
County of Cumberland	Municipality of Cumberland Land Use Bylaw Consolidated Copy with All Amendments	Jun-15	23-Nov-17	Open Space	0	N	
County of Cumberland	Municipality of Cumberland Land Use Bylaw Consolidated Copy with All Amendments	Jun-15	23-Nov-17	Village Commercial Centre	0	N	
County of Cumberland	Municipality of Cumberland Land Use Bylaw Consolidated Copy with All Amendments	Jun-15	23-Nov-17	Limited Rural Commercial	0	N	
County of Cumberland	Municipality of Cumberland Land Use Bylaw Consolidated Copy with All Amendments	Jun-15	23-Nov-17	Industrial	0	N	

AgriRisk Project: Municipality of the County of Inverness - Land Use Planning Matrix

Municipality	By-law	Amended to	Date Accessed	Zone	Policy Score	Permits New Agricultural Use	Comments
County of Inverness	Cheticamp Land Use Bylaw	May-13	05-Feb-18	R-1	0	N	
County of Inverness	Cheticamp Land Use Bylaw	May-13	05-Feb-18	R-2	0	N	
County of Inverness	Cheticamp Land Use Bylaw	May-13	05-Feb-18	R-3	0	N	
County of Inverness	Cheticamp Land Use Bylaw	May-13	05-Feb-18	C-1	0	N	
County of Inverness	Cheticamp Land Use Bylaw	May-13	05-Feb-18	C-2	0	N	
County of Inverness	Cheticamp Land Use Bylaw	May-13	05-Feb-18	C-3	0	N	
County of Inverness	Cheticamp Land Use Bylaw	May-13	05-Feb-18	W	0	N	
County of Inverness	Cheticamp Land Use Bylaw	May-13	05-Feb-18	MU	0	N	
County of Inverness	Cheticamp Land Use Bylaw	May-13	05-Feb-18	RR-1	0.5	Y	Agriculture is permitted amongst other uses
County of Inverness	Cheticamp Land Use Bylaw	May-13	05-Feb-18	MHP	0	N	
County of Inverness	Cheticamp Land Use Bylaw	May-13	05-Feb-18	RC-1	0	N	
County of Inverness	Cheticamp Land Use Bylaw	May-13	05-Feb-18	RC-2	0	N	
County of Inverness	Cheticamp Land Use Bylaw	May-13	05-Feb-18	RI-1	0	N	
County of Inverness	Inverness Land Use Bylaw	Oct-15	05-Feb-18	RD-1	0.5	Y	Agriculture is permitted amongst other uses
County of Inverness	Inverness Land Use Bylaw	Oct-15	05-Feb-18	RR	0	N	
County of Inverness	Inverness Land Use Bylaw	Oct-15	05-Feb-18	R-1	0	N	
County of Inverness	Inverness Land Use Bylaw	Oct-15	05-Feb-18	R-2	0	N	
County of Inverness	Inverness Land Use Bylaw	Oct-15	05-Feb-18	I-1	0	N	
County of Inverness	Inverness Land Use Bylaw	Oct-15	05-Feb-18	O-1	0	N	
County of Inverness	Inverness Land Use Bylaw	Oct-15	05-Feb-18	O-2	0	N	
County of Inverness	Inverness Land Use Bylaw	Oct-15	05-Feb-18	O-3	0	N	
County of Inverness	Inverness Land Use Bylaw	Oct-15	05-Feb-18	C-1	0	N	
County of Inverness	Inverness Land Use Bylaw	Oct-15	05-Feb-18	C-2	0	N	
County of Inverness	Inverness Land Use Bylaw	Oct-15	05-Feb-18	C-3	0	N	
County of Inverness	Inverness Land Use Bylaw	Oct-15	05-Feb-18	WD	0	N	
County of Inverness	Inverness Land Use Bylaw	Oct-15	05-Feb-18	M-1	0	N	
County of Inverness	Inverness Land Use Bylaw	Oct-15	05-Feb-18	WHP	0	N	

County of Inverness continued on next page.

County of Inverness	Port Hastings Planning Area Land Use By-law	Dec-97	05-Feb-18	R-1	0	N	
County of Inverness	Port Hastings Planning Area Land Use By-law	Dec-97	05-Feb-18	R-2	0	N	
County of Inverness	Port Hastings Planning Area Land Use By-law	Dec-97	05-Feb-18	MHP	0	N	
County of Inverness	Port Hastings Planning Area Land Use By-law	Dec-97	05-Feb-18	RM-1	0.5	Y	Agriculture is permitted amongst other uses
County of Inverness	Port Hastings Planning Area Land Use By-law	Dec-97	05-Feb-18	C-1	0	N	
County of Inverness	Port Hastings Planning Area Land Use By-law	Dec-97	05-Feb-18	M-1	0	N	
County of Inverness	Port Hastings Planning Area Land Use By-law	Dec-97	05-Feb-18	O-1	0	N	
County of Inverness	Port Hastings Planning Area Land Use By-law	Dec-97	05-Feb-18	O-2	0	N	
County of Inverness	Port Hood Land Use By-law	Jan-18	05-Feb-18	R-1	0	N	
County of Inverness	Port Hood Land Use By-law	Jan-18	05-Feb-18	R-2	0.5	Y	Agriculture is permitted amongst other uses
County of Inverness	Port Hood Land Use By-law	Jan-18	05-Feb-18	R-3	0	N	
County of Inverness	Port Hood Land Use By-law	Jan-18	05-Feb-18	MHP	0	N	
County of Inverness	Port Hood Land Use By-law	Jan-18	05-Feb-18	C-1	0	N	
County of Inverness	Port Hood Land Use By-law	Jan-18	05-Feb-18	C-2	0	N	
County of Inverness	Port Hood Land Use By-law	Jan-18	05-Feb-18	C-3	0	N	
County of Inverness	Port Hood Land Use By-law	Jan-18	05-Feb-18	C-4	0	N	
County of Inverness	Port Hood Land Use By-law	Jan-18	05-Feb-18	M-1	0	N	
County of Inverness	Port Hood Land Use By-law	Jan-18	05-Feb-18	M-2	0	N	
County of Inverness	Port Hood Land Use By-law	Jan-18	05-Feb-18	O-1	0	N	
County of Inverness	Whycocomagh Land Use By-law	Sep-04	05-Feb-18	R-1	0	N	
County of Inverness	Whycocomagh Land Use By-law	Sep-04	05-Feb-18	R-2	0	N	Existing agricultural uses are permitted
County of Inverness	Whycocomagh Land Use By-law	Sep-04	05-Feb-18	MHP	0	N	
County of Inverness	Whycocomagh Land Use By-law	Sep-04	05-Feb-18	C-1	0	N	
County of Inverness	Whycocomagh Land Use By-law	Sep-04	05-Feb-18	C-2	0	N	
County of Inverness	Whycocomagh Land Use By-law	Sep-04	05-Feb-18	OS	0	N	
County of Inverness	Whycocomagh Land Use By-law	Sep-04	05-Feb-18	I-1	0.5	Y	Agriculture is permitted amongst other uses
County of Inverness	Whycocomagh Land Use By-law	Sep-04	05-Feb-18	I-2	0	N	

AgriRisk Project: Municipality of the County of Kings - Land Use Planning Matrix

Municipality	By-law	Amended to	Date Accessed	Zone	Policy Score	Permits New Agricultural Use	Comments
County of Kings	Land Use Bylaw of the Municipality of the County of Kings	Jul-05	28-Sep-17	C1	0	N	Commercial development, does allow for agricultural processing and manufacturing
County of Kings	Land Use Bylaw of the Municipality of the County of Kings	Jul-05	28-Sep-17	C2	0	N	Commercial development, does allow for agricultural processing and manufacturing
County of Kings	Land Use Bylaw of the Municipality of the County of Kings	Jul-05	28-Sep-17	C3	0	N	
County of Kings	Land Use Bylaw of the Municipality of the County of Kings	Jul-05	28-Sep-17	C4	0	N	
County of Kings	Land Use Bylaw of the Municipality of the County of Kings	Jul-05	28-Sep-17	C5	0	N	
County of Kings	Land Use Bylaw of the Municipality of the County of Kings	Jul-05	28-Sep-17	C6	0	N	
County of Kings	Land Use Bylaw of the Municipality of the County of Kings	Jul-05	28-Sep-17	C7	0	N	
County of Kings	Land Use Bylaw of the Municipality of the County of Kings	Jul-05	28-Sep-17	M1	0	N	
County of Kings	Land Use Bylaw of the Municipality of the County of Kings	Jul-05	28-Sep-17	M2	0	N	Agricultural processing, sorting, grading, and packaging are permitted.
County of Kings	Land Use Bylaw of the Municipality of the County of Kings	Jul-05	28-Sep-17	R1	0	N	Existing farms are permitted
County of Kings	Land Use Bylaw of the Municipality of the County of Kings	Jul-05	28-Sep-17	R2	0	N	Existing farms are permitted
County of Kings	Land Use Bylaw of the Municipality of the County of Kings	Jul-05	28-Sep-17	RM	0	N	Existing farms are permitted
County of Kings	Land Use Bylaw of the Municipality of the County of Kings	Jul-05	28-Sep-17	R3	0	N	Existing farms are permitted
County of Kings	Land Use Bylaw of the Municipality of the County of Kings	Jul-05	28-Sep-17	R4	0	N	
County of Kings	Land Use Bylaw of the Municipality of the County of Kings	Jul-05	28-Sep-17	R5	0	N	
County of Kings	Land Use Bylaw of the Municipality of the County of Kings	Jul-05	28-Sep-17	RF	0	N	
County of Kings	Land Use Bylaw of the Municipality of the County of Kings	Jul-05	28-Sep-17	R10	0	N	
County of Kings	Land Use Bylaw of the Municipality of the County of Kings	Jul-05	28-Sep-17	RC	0	N	"Other Uses Agricultural Uses as part of a farm operation, excluding commercial livestock operations – Legally existing on February 28, 2013"
County of Kings	Land Use Bylaw of the Municipality of the County of Kings	Jul-05	28-Sep-17	A1	1	Y	Agriculture is the primary use and does not require a permit, other uses and dwellings are permitted by development agreement provided the soil is not class 2, 3 or active class 4 soil, ranking may need to be separated based on soil class, Wineries are included as an as-of-right commercial use within the zone
County of Kings	Land Use Bylaw of the Municipality of the County of Kings	Jul-05	28-Sep-17	F1	0.5	Y	Agriculture is a permitted use
County of Kings	Land Use Bylaw of the Municipality of the County of Kings	Jul-05	28-Sep-17	C8	0	N	Only allows for agricultural equipment/parts/rentals/sales/service
County of Kings	Land Use Bylaw of the Municipality of the County of Kings	Jul-05	28-Sep-17	C9	0	N	
County of Kings	Land Use Bylaw of the Municipality of the County of Kings	Jul-05	28-Sep-17	C10	0	N	

County of Kings continued on next page.

County of Kings	Land Use Bylaw of the Municipality of the County of Kings	Jul-05	28-Sep-17	C13	0.5	Y	Permits agriculture and wineries and also other uses
County of Kings	Land Use Bylaw of the Municipality of the County of Kings	Jul-05	28-Sep-17	M3	0	N	Supporting industries
County of Kings	Land Use Bylaw of the Municipality of the County of Kings	Jul-05	28-Sep-17	M4	0	N	Supporting industries
County of Kings	Land Use Bylaw of the Municipality of the County of Kings	Jul-05	28-Sep-17	M5	0	N	
County of Kings	Land Use Bylaw of the Municipality of the County of Kings	Jul-05	28-Sep-17	M6	0	N	
County of Kings	Land Use Bylaw of the Municipality of the County of Kings	Jul-05	28-Sep-17	R6	0.5	Y	Agriculture is a permitted use and also other uses
County of Kings	Land Use Bylaw of the Municipality of the County of Kings	Jul-05	28-Sep-17	R7	0.5	Y	Agriculture is a permitted use and also other uses
County of Kings	Land Use Bylaw of the Municipality of the County of Kings	Jul-05	28-Sep-17	R8	0	N	
County of Kings	Land Use Bylaw of the Municipality of the County of Kings	Jul-05	28-Sep-17	R9	0.5	Y	Agriculture is a permitted use and also other uses
County of Kings	Land Use Bylaw of the Municipality of the County of Kings	Jul-05	28-Sep-17	S1	0	N	
County of Kings	Land Use Bylaw of the Municipality of the County of Kings	Jul-05	28-Sep-17	S2	0	Y	Existing agricultural use is permitted
County of Kings	Land Use Bylaw of the Municipality of the County of Kings	Jul-05	28-Sep-17	CS	0.5	Y	Agriculture is a permitted use and also other uses
County of Kings	Land Use Bylaw of the Municipality of the County of Kings	Jul-05	28-Sep-17	C11	0	N	
County of Kings	Land Use Bylaw of the Municipality of the County of Kings	Jul-05	28-Sep-17	C12	0	N	
County of Kings	Land Use Bylaw of the Municipality of the County of Kings	Jul-05	28-Sep-17	M7	0	N	
County of Kings	Land Use Bylaw of the Municipality of the County of Kings	Jul-05	28-Sep-17	I1	0	N	
County of Kings	Land Use Bylaw of the Municipality of the County of Kings	Jul-05	28-Sep-17	CF	0	N	
County of Kings	Land Use Bylaw of the Municipality of the County of Kings	Jul-05	28-Sep-17	P1	0	N	
County of Kings	Land Use Bylaw of the Municipality of the County of Kings	Jul-05	28-Sep-17	P2	0	N	
County of Kings	Land Use Bylaw of the Municipality of the County of Kings	Jul-05	28-Sep-17	O1	0.5	Y	Agriculture is a permitted use and also other uses
County of Kings	Land Use Bylaw of the Municipality of the County of Kings	Jul-05	28-Sep-17	O2	0.5	Y	Agriculture is a permitted use and also other uses
County of Kings	Land Use Bylaw of the Municipality of the County of Kings	Jul-05	28-Sep-17	T1	0	N	

AgriRisk Project: Municipality of the County of Pictou - Land Use Planning Matrix

Municipality	By-law	Amended to	Date Accessed	Zone	Policy Score	Permits New Agricultural Use	Comments
County of Pictou	Municipality of the County of Pictou Land Use Bylaw	Nov-07	28-Dec-17	GD	0.5	Y	

AgriRisk Project: Municipality of The County of Richmond - Land Use Planning Matrix

Municipality	By-law	Amended to	Date Accessed	Zone	Policy Score	Permits Nrw Agricultural Use	Comments
County of Richmond	Central Richmond Plan Area Land Use By-law	May-02	04-Feb-18	VR-1	0	N	Existing agricultural uses permitted
County of Richmond	Central Richmond Plan Area Land Use By-law	May-02	04-Feb-18	VG-2	0	N	Existing agricultural uses permitted
County of Richmond	Central Richmond Plan Area Land Use By-law	May-02	04-Feb-18	RR-1	0	N	
County of Richmond	Central Richmond Plan Area Land Use By-law	May-02	04-Feb-18	RG-2	0	N	
County of Richmond	Municipal Planning Strategy and Land Use By-law for the Isle Madame Planning Area	Jul-11	04-Feb-18	VR-1	0.5	Y	Agriculture is permitted amongst other uses
County of Richmond	Municipal Planning Strategy and Land Use By-law for the Isle Madame Planning Area	Jul-11	04-Feb-18	VR-2	0.5	Y	Agriculture is permitted amongst other uses
County of Richmond	Municipal Planning Strategy and Land Use By-law for the Isle Madame Planning Area	Jul-11	04-Feb-18	VC	0	N	
County of Richmond	Municipal Planning Strategy and Land Use By-law for the Isle Madame Planning Area	Jul-11	04-Feb-18	VLI	0.5	Y	Agriculture is permitted amongst other uses
County of Richmond	Municipal Planning Strategy and Land Use By-law for the Isle Madame Planning Area	Jul-11	04-Feb-18	VMU	0.5	Y	Agriculture is permitted amongst other uses
County of Richmond	Municipal Planning Strategy and Land Use By-law for the Isle Madame Planning Area	Jul-11	04-Feb-18	VA	0.5	Y	Agriculture is permitted amongst other uses, agriculture is not subject to the requirements of other zones
County of Richmond	Municipal Planning Strategy and Land Use By-law for the Isle Madame Planning Area	Jul-11	04-Feb-18	VO	0	N	
County of Richmond	Municipal Planning Strategy and Land Use By-law for the Isle Madame Planning Area	Jul-11	04-Feb-18	MHP	0	N	
County of Richmond	Municipal Planning Strategy and Land Use By-law for the Isle Madame Planning Area	Jul-11	04-Feb-18	RG	0.5	Y	Agriculture is permitted amongst other uses
County of Richmond	Municipal Planning Strategy and Land Use By-law for the Isle Madame Planning Area	Jul-11	04-Feb-18	RR	0.5	Y	Agriculture is permitted amongst other uses
County of Richmond	Municipal Planning Strategy and Land Use By-law for the Isle Madame Planning Area	Jul-11	04-Feb-18	RI	0.5	Y	Agriculture is permitted amongst other uses
County of Richmond	Municipal Planning Strategy and Land Use By-law for the Isle Madame Planning Area	Jul-11	04-Feb-18	O-1	0	N	
County of Richmond	Municipal Planning Strategy and Land Use By-law for the Isle Madame Planning Area	Jul-11	04-Feb-18	O-2	0	N	
County of Richmond	Municipal Planning Strategy and Land Use By-law for the Isle Madame Planning Area	Jul-11	04-Feb-18	O-3	0.5	Y	Agriculture is permitted amongst other uses
County of Richmond	Shannon Lake Wellhead protection Area Land Use By-law	Apr-02	04-Feb-18	WHP	0	N	
County of Richmond	Shannon Lake Wellhead protection Area Land Use By-law	Apr-02	04-Feb-18	WSP	0.5	Y	Agriculture is permitted amongst other uses
County of Richmond	Sporting Mountain Plan Area Land Use By-law	May-10	04-Feb-18	G-1	0.5	Y	Agriculture is permitted amongst other uses
County of Richmond	Sporting Mountain Plan Area Land Use By-law	May-10	04-Feb-18	RD-1	0.5	Y	Agriculture is permitted amongst other uses
County of Richmond	St. Peter's Land Use By-law	Feb-14	04-Feb-18	R-1	0.5	Y	Agriculture is permitted amongst other uses
County of Richmond	St. Peter's Land Use By-law	Feb-14	04-Feb-18	R-2	0	N	
County of Richmond	St. Peter's Land Use By-law	Feb-14	04-Feb-18	RC-1	0	N	
County of Richmond	St. Peter's Land Use By-law	Feb-14	04-Feb-18	R-3	0	N	
County of Richmond	St. Peter's Land Use By-law	Feb-14	04-Feb-18	MHP	0	N	
County of Richmond	St. Peter's Land Use By-law	Feb-14	04-Feb-18	C-1	0	N	
County of Richmond	St. Peter's Land Use By-law	Feb-14	04-Feb-18	C-2	0	N	
County of Richmond	St. Peter's Land Use By-law	Feb-14	04-Feb-18	OS	0	N	
County of Richmond	West Richmond Planning Area Land Use By-law	Jun-00	04-Feb-18	R-1	0	N	
County of Richmond	West Richmond Planning Area Land Use By-law	Jun-00	04-Feb-18	OS	0	N	
County of Richmond	West Richmond Planning Area Land Use By-law	Jun-00	04-Feb-18	W-1	0	N	
County of Richmond	West Richmond Planning Area Land Use By-law	Jun-00	04-Feb-18	W-2	0	N	
County of Richmond	West Richmond Planning Area Land Use By-law	Jun-00	04-Feb-18	I-1	0	N	
County of Richmond	West Richmond Planning Area Land Use By-law	Jun-00	04-Feb-18	I-2	0	N	
County of Richmond	West Richmond Planning Area Land Use By-law	Jun-00	04-Feb-18	I-3	0	N	
County of Richmond	Land Use By-law for the County of Richmond	Jun-10	04-Feb-18	GD-1	0.5	Y	Agriculture is permitted amongst other uses
County of Richmond	Land Use By-law for the County of Richmond	Jun-10	04-Feb-18	WD-1	0.5	Y	Agriculture is permitted amongst other uses

AgriRisk Project: Municipality of the County of Victoria - Land Use Planning Matrix

Municipality	By-law	Amended to	Date Accessed	Zone	Policy Score	Permits New Agricultural Use	Comments
County of Victoria	Baddeck Land Use By-law	Aug-09	05-Feb-18	R-1	0	N	
County of Victoria	Baddeck Land Use By-law	Aug-09	05-Feb-18	R-2	0	N	
County of Victoria	Baddeck Land Use By-law	Aug-09	05-Feb-18	MHP	0	N	
County of Victoria	Baddeck Land Use By-law	Aug-09	05-Feb-18	C-1	0	N	
County of Victoria	Baddeck Land Use By-law	Aug-09	05-Feb-18	C-2	0	N	
County of Victoria	Baddeck Land Use By-law	Aug-09	05-Feb-18	C-3	0	N	
County of Victoria	Baddeck Land Use By-law	Aug-09	05-Feb-18	C-4	0	N	
County of Victoria	Baddeck Land Use By-law	Aug-09	05-Feb-18	O-1	0	N	
County of Victoria	Land Use By-law of the County of Victoria Concerning the Regulation of Wind Turbine Development	Apr-14	05-Feb-18	WR-1	0.5	Y	Agriculture is permitted amongst other uses
County of Victoria	Land Use By-law of the County of Victoria Concerning the Regulation of Wind Turbine Development	Apr-14	05-Feb-18	WR-2	0.5	Y	Agriculture is permitted amongst other uses

AgriRisk Project: Municipality of the District of Argyle - Land Use Planning Matrix

Municipality	By-law	Amended to	Date Accessed	Zone	Policy Score	Permits New Agricultural Use	Comments
District of Argyle	Municipality of Argyle Land Use Bylaw	Aug-16	30-Jan-18	MU	0.5	Y	Permits agriculture amongst other uses
District of Argyle	Municipality of Argyle Land Use Bylaw	Aug-16	30-Jan-18	LI	0	N	
District of Argyle	Municipality of Argyle Land Use Bylaw	Aug-16	30-Jan-18	HI	0	N	
District of Argyle	Municipality of Argyle Land Use Bylaw	Aug-16	30-Jan-18	GU	0.5	Y	Permits agriculture amongst other uses
District of Argyle	Municipality of Argyle Land Use Bylaw	Aug-16	30-Jan-18	GUI	0	N	
District of Argyle	Municipality of Argyle Land Use Bylaw	Aug-16	30-Jan-18	V	0.5	N	Permits agriculture amongst other uses
District of Argyle	Municipality of Argyle Land Use Bylaw	Aug-16	30-Jan-18	RD	0.5	Y	Permits agriculture amongst other uses
District of Argyle	Municipality of Argyle Land Use Bylaw	Aug-16	30-Jan-18	MI	0	N	
District of Argyle	Municipality of Argyle Land Use Bylaw	Aug-16	30-Jan-18	BP	0	N	
District of Argyle	Municipality of Argyle Land Use Bylaw	Aug-16	30-Jan-18	RP	0	N	
District of Argyle	Municipality of Argyle Land Use Bylaw	Aug-16	30-Jan-18	CW	0	N	
District of Argyle	Municipality of Argyle Land Use Bylaw	Aug-16	30-Jan-18	WF	0	N	
District of Argyle	Municipality of Argyle Land Use Bylaw	Aug-16	30-Jan-18	VI	0	N	

AgriRisk Project: Municipality of the District of Barrington - Land Use Planning Matrix

Municipality	By-law	Amended to	Date Accessed	Zone	Policy Score	Permits New Agricultural Use	Comments
District of Barrington	Municipality of the District of Barrington Land Use Bylaw	Nov-13	26-Jan-18	RG	0.5	Y	Permits agriculture amongst other uses
District of Barrington	Municipality of the District of Barrington Land Use Bylaw	Nov-13	26-Jan-18	CG	0	N	
District of Barrington	Municipality of the District of Barrington Land Use Bylaw	Nov-13	26-Jan-18	GC	0	N	All developments require a Dev Agreement
District of Barrington	Municipality of the District of Barrington Land Use Bylaw	Nov-13	26-Jan-18	BP	0	N	
District of Barrington	Municipality of the District of Barrington Land Use Bylaw	Nov-13	26-Jan-18	MU	0.5	Y	Permits agriculture amongst other uses
District of Barrington	Municipality of the District of Barrington Land Use Bylaw	Nov-13	26-Jan-18	RR	0	N	
District of Barrington	Municipality of the District of Barrington Land Use Bylaw	Nov-13	26-Jan-18	RD	0.5	Y	Permits agriculture amongst other uses
District of Barrington	Municipality of the District of Barrington Land Use Bylaw	Nov-13	26-Jan-18	RI	0	N	
District of Barrington	Municipality of the District of Barrington Land Use Bylaw	Nov-13	26-Jan-18	IM	0	N	
District of Barrington	Municipality of the District of Barrington Land Use Bylaw	Nov-13	26-Jan-18	REC	0	N	
District of Barrington	Municipality of the District of Barrington Land Use Bylaw	Nov-13	26-Jan-18	CW	0	N	

AgriRisk Project: Municipality of the District of Chester - Land Use Planning Matrix

Municipality	By-law	Amended to	Date Accessed	Zone	Policy Score	Permits New Agricultural Use	Comments
District of Chester	Municipality of the District of Chester Land Use By-law	Apr-17	28-Dec-17	RR	0.5	Y	Agriculture is permitted amongst other uses.
District of Chester	Municipality of the District of Chester Land Use By-law	Apr-17	28-Dec-17	RM	0.5	Y	Agriculture is permitted without a dev permit. Other uses also permitted.
District of Chester	Municipality of the District of Chester Land Use By-law	Apr-17	28-Dec-17	LR	0	N	Existing non-conforming uses are permitted
District of Chester	Municipality of the District of Chester Land Use By-law	Apr-17	28-Dec-17	SR	0	N	Existing non-conforming uses are permitted
District of Chester	Municipality of the District of Chester Land Use By-law	Apr-17	28-Dec-17	MCP-SR	0	N	
District of Chester	Municipality of the District of Chester Land Use By-law	Apr-17	28-Dec-17	MCP-R2	0	N	
District of Chester	Municipality of the District of Chester Land Use By-law	Apr-17	28-Dec-17	MCP-RR	0	N	
District of Chester	Municipality of the District of Chester Land Use By-law	Apr-17	28-Dec-17	MCP-HC	0	N	
District of Chester	Municipality of the District of Chester Land Use By-law	Apr-17	28-Dec-17	MCP-CC	0	N	
District of Chester	Municipality of the District of Chester Land Use By-law	Apr-17	28-Dec-17	MCP-I	0	N	
District of Chester	Municipality of the District of Chester Land Use By-law	Apr-17	28-Dec-17	MCP-CP	0	N	
District of Chester	Municipality of the District of Chester Land Use By-law	Apr-17	28-Dec-17	GB	0.5	Y	Permitted amongst other uses
District of Chester	Municipality of the District of Chester Land Use By-law	Apr-17	28-Dec-17	KI	0	N	
District of Chester	Municipality of the District of Chester Land Use By-law	Apr-17	28-Dec-17	KM	0	N	
District of Chester	Chester Village Area Revised Land Use By-law	Feb-18	10-Mar-18	LR	0	N	
District of Chester	Chester Village Area Revised Land Use By-law	Feb-18	10-Mar-18	CVR	0	N	
District of Chester	Chester Village Area Revised Land Use By-law	Feb-18	10-Mar-18	ER	0	N	
District of Chester	Chester Village Area Revised Land Use By-law	Feb-18	10-Mar-18	WR	0	N	
District of Chester	Chester Village Area Revised Land Use By-law	Feb-18	10-Mar-18	SR	0	N	
District of Chester	Chester Village Area Revised Land Use By-law	Feb-18	10-Mar-18	MR	0	N	
District of Chester	Chester Village Area Revised Land Use By-law	Feb-18	10-Mar-18	C	0	N	
District of Chester	Chester Village Area Revised Land Use By-law	Feb-18	10-Mar-18	HC	0	N	
District of Chester	Chester Village Area Revised Land Use By-law	Feb-18	10-Mar-18	SCA	0	N	
District of Chester	Chester Village Area Revised Land Use By-law	Feb-18	10-Mar-18	SCB	0	N	
District of Chester	Chester Village Area Revised Land Use By-law	Feb-18	10-Mar-18	SCC	0	N	
District of Chester	Chester Village Area Revised Land Use By-law	Feb-18	10-Mar-18	MI	0	N	
District of Chester	Chester Village Area Revised Land Use By-law	Feb-18	10-Mar-18	RU	0.5	Y	Agriculture is permitted amongst other uses
District of Chester	Chester Village Area Revised Land Use By-law	Feb-18	10-Mar-18	RU-2	0.5	Y	Agriculture is permitted amongst other uses
District of Chester	Chester Village Area Revised Land Use By-law	Feb-18	10-Mar-18	P	0	N	
District of Chester	Chester Village Area Revised Land Use By-law	Feb-18	10-Mar-18	I	0	N	
District of Chester	Chester Village Area Revised Land Use By-law	Feb-18	10-Mar-18	RI	0	N	
District of Chester	Chester Village Area Revised Land Use By-law	Feb-18	10-Mar-18	WA	0	N	
District of Chester	Chester Village Area Revised Land Use By-law	Feb-18	10-Mar-18	PW	0.5	Y	Agriculture is permitted amongst other uses
District of Chester	Chester Village Area Revised Land Use By-law	Feb-18	10-Mar-18	CA	0	N	

AgriRisk Project: Municipality of the District of Clare - Land Use Planning Matrix

Municipality	By-law	Amended to	Date Accessed	Zone	Policy Score	Permits New Agricultural Use	Comments
District of Clare	By-law #27 Land Use By-law Municipality of the District of Clare	Jul-12	03-Jan-18	GD	0.5	Y	

AgriRisk Project: Municipality of the District of Digby - Land Use Planning Matrix

Municipality	By-law	Amended to	Date Accessed	Zone	Policy Score	Permits New Agricultural Use	Comments
District of Digby	Conway Area Land Use By-law	Feb-14	28-Dec-17	RR	0.5	Y	Agriculture is permitted amongst other uses
District of Digby	Conway Area Land Use By-law	Feb-14	28-Dec-17	RU	0	N	
District of Digby	Conway Area Land Use By-law	Feb-14	28-Dec-17	CG	0	N	
District of Digby	Conway Area Land Use By-law	Feb-14	28-Dec-17	M	0	N	
District of Digby	Conway Area Land Use By-law	Feb-14	28-Dec-17	OS	0	N	
District of Digby	Digby Wellfield Protection Area Land Use By-law	Oct-15	28-Dec-17	WHP	0	N	
District of Digby	Digby Wellfield Protection Area Land Use By-law	Oct-15	28-Dec-17	WFP-A	0.5	Y	Agriculture is permitted amongst other uses
District of Digby	Digby Wellfield Protection Area Land Use By-law	Oct-15	28-Dec-17	WFP-B	0.5	Y	Agriculture is permitted amongst other uses
District of Digby	Digby Wellfield Protection Area Land Use By-law	Oct-15	28-Dec-17	WFP-C	0.5	Y	Agriculture is permitted amongst other uses
District of Digby	Digby Wellfield Protection Area Land Use By-law	Oct-15	28-Dec-17	WS	0	N	
District of Digby	Digby Wellfield Protection Area Land Use By-law	Oct-15	28-Dec-17	WFE	0.5	Y	Agriculture is permitted amongst other uses

AgriRisk Project: Municipality of East Hants - Draft Land Use Planning Matrix

Municipality	By-law	Amended to	Accessed	Zone	Policy Score	Permits New Agricultural Use	Comments
District of East Hants	Land Use Bylaw East Hants Official Community Plan Bylaw P-500	Jul-16	05-Dec-17	AR	1	Y	Agriculture, forestry and wind permitted. Non-farm dwellings require a development agreement
District of East Hants	Land Use Bylaw East Hants Official Community Plan Bylaw P-500	Jul-16	05-Dec-17	RU	0.5	Y	Agriculture permitted amongst other uses
District of East Hants	Land Use Bylaw East Hants Official Community Plan Bylaw P-500	Jul-16	05-Dec-17	RCDD	0	N	All permits require a development agreement
District of East Hants	Land Use Bylaw East Hants Official Community Plan Bylaw P-500	Jul-16	05-Dec-17	WE	0.5	Y	No other provisions of the bylaw apply except for wind turbine development. All other use permitted.
District of East Hants	Land Use Bylaw East Hants Official Community Plan Bylaw P-500	Jul-16	05-Dec-17	CR	0	N	
District of East Hants	Land Use Bylaw East Hants Official Community Plan Bylaw P-500	Jul-16	05-Dec-17	LR	0	N	
District of East Hants	Land Use Bylaw East Hants Official Community Plan Bylaw P-500	Jul-16	05-Dec-17	R1	0	N	
District of East Hants	Land Use Bylaw East Hants Official Community Plan Bylaw P-500	Jul-16	05-Dec-17	R2	0	N	
District of East Hants	Land Use Bylaw East Hants Official Community Plan Bylaw P-500	Jul-16	05-Dec-17	MH	0	N	
District of East Hants	Land Use Bylaw East Hants Official Community Plan Bylaw P-500	Jul-16	05-Dec-17	R2-T	0	N	
District of East Hants	Land Use Bylaw East Hants Official Community Plan Bylaw P-500	Jul-16	05-Dec-17	R3	0	N	
District of East Hants	Land Use Bylaw East Hants Official Community Plan Bylaw P-500	Jul-16	05-Dec-17	MC	0	N	
District of East Hants	Land Use Bylaw East Hants Official Community Plan Bylaw P-500	Jul-16	05-Dec-17	VC	0	N	
District of East Hants	Land Use Bylaw East Hants Official Community Plan Bylaw P-500	Jul-16	05-Dec-17	WCDD	0	N	
District of East Hants	Land Use Bylaw East Hants Official Community Plan Bylaw P-500	Jul-16	05-Dec-17	GC	0	N	
District of East Hants	Land Use Bylaw East Hants Official Community Plan Bylaw P-500	Jul-16	05-Dec-17	HC	0	N	
District of East Hants	Land Use Bylaw East Hants Official Community Plan Bylaw P-500	Jul-16	05-Dec-17	RC	0	N	
District of East Hants	Land Use Bylaw East Hants Official Community Plan Bylaw P-500	Jul-16	05-Dec-17	BP	0	N	
District of East Hants	Land Use Bylaw East Hants Official Community Plan Bylaw P-500	Jul-16	05-Dec-17	IC	0	N	
District of East Hants	Land Use Bylaw East Hants Official Community Plan Bylaw P-500	Jul-16	05-Dec-17	IU	0	N	
District of East Hants	Land Use Bylaw East Hants Official Community Plan Bylaw P-500	Jul-16	05-Dec-17	OS	0	N	
District of East Hants	Land Use Bylaw East Hants Official Community Plan Bylaw P-500	Jul-16	05-Dec-17	HF	0		
District of East Hants	Land Use Bylaw East Hants Official Community Plan Bylaw P-500	Jul-16	05-Dec-17	MF	Same probability as underlying zone	Y	Permits uses in the underlying zones. Doesn't restrict agricultural use
District of East Hants	Land Use Bylaw East Hants Official Community Plan Bylaw P-500	Jul-16	05-Dec-17	WG	0	N	Does not prohibit agricultural use but must maintain 60% of existing vegetation
District of East Hants	Land Use Bylaw East Hants Official Community Plan Bylaw P-500	Jul-16	05-Dec-17	WI	Same probability as underlying zone	Y	Does not prohibit agricultural use
District of East Hants	Land Use Bylaw East Hants Official Community Plan Bylaw P-500	Jul-16	05-Dec-17	WP	Same probability as underlying zone	Y	Does not prohibit agricultural use
District of East Hants	Land Use Bylaw East Hants Official Community Plan Bylaw P-500	Jul-16	05-Dec-17	SAP	Same probability as underlying zone	Y	Does not prohibit agricultural use
District of East Hants	Land Use Bylaw East Hants Official Community Plan Bylaw P-500	Jul-16	05-Dec-17	WS	0	N	Existing agricultural uses are permitted
District of East Hants	Land Use Bylaw East Hants Official Community Plan Bylaw P-500	Jul-16	05-Dec-17	IR-14	0	N	Not under East Hants jurisdiction

AgriRisk Project: Municipality of the District of Guysborough- Land Use Planning Matrix

Municipality	By-law	Amended to	Date Accessed	Zone	Policy Score	Permits New Agricultural Use	Comments
District of Guysborough	Municipality of the District of Guysborough Land Use Bylaw	Apr-13	05-Feb-18	R-1	0	N	
District of Guysborough	Municipality of the District of Guysborough Land Use Bylaw	Apr-13	05-Feb-18	R-2	0	N	
District of Guysborough	Municipality of the District of Guysborough Land Use Bylaw	Apr-13	05-Feb-18	R-3	0	N	
District of Guysborough	Municipality of the District of Guysborough Land Use Bylaw	Apr-13	05-Feb-18	MRR-1	0.5	Y	Agriculture is permitted amongst other uses
District of Guysborough	Municipality of the District of Guysborough Land Use Bylaw	Apr-13	05-Feb-18	CC-1	0.5	Y	Agriculture is permitted amongst other uses
District of Guysborough	Municipality of the District of Guysborough Land Use Bylaw	Apr-13	05-Feb-18	C-1	0	N	
District of Guysborough	Municipality of the District of Guysborough Land Use Bylaw	Apr-13	05-Feb-18	MC-1	0	N	
District of Guysborough	Municipality of the District of Guysborough Land Use Bylaw	Apr-13	05-Feb-18	I-1	0	N	
District of Guysborough	Municipality of the District of Guysborough Land Use Bylaw	Apr-13	05-Feb-18	I-2	0	N	
District of Guysborough	Municipality of the District of Guysborough Land Use Bylaw	Apr-13	05-Feb-18	I-3	0	N	
District of Guysborough	Municipality of the District of Guysborough Land Use Bylaw	Apr-13	05-Feb-18	I-4	0	N	
District of Guysborough	Municipality of the District of Guysborough Land Use Bylaw	Apr-13	05-Feb-18	REC-1	0	N	
District of Guysborough	Municipality of the District of Guysborough Land Use Bylaw	Apr-13	05-Feb-18	NR-1	0.5	Y	Agriculture is permitted amongst other uses
District of Guysborough	Municipality of the District of Guysborough Land Use Bylaw	Apr-13	05-Feb-18	EPA	0	N	
District of Guysborough	Municipality of the District of Guysborough Land Use Bylaw	Apr-13	05-Feb-18	Large Scale Wind Turbines		N	Only regulates wind turbines
District of Guysborough	Municipality of the District of Guysborough Land Use Bylaw	Apr-13	05-Feb-18	Designated Watersheds	0	N	Prohibits agriculture
District of Guysborough	Municipality of the District of Guysborough Land Use Bylaw	Apr-13	05-Feb-18	Wetlands	0	N	Prohibits agriculture

AgriRisk Project: Municipality of the District of St. Mary's - Land Use Planning Matrix

Municipality	By-law	Amended to	Date Accessed	Zone	Policy Score	Permits Nrw Agricultural Use	Comments
District of St. Mary's	Municipality of the District of St. Mary's Land Use Bylaw	Apr-07	15-Feb-18	PRE	0	N	
District of St. Mary's	Municipality of the District of St. Mary's Land Use Bylaw	Apr-07	15-Feb-18	CON	0.5	Y	Agriculture is permitted with a development agreement
District of St. Mary's	Municipality of the District of St. Mary's Land Use Bylaw	Apr-07	15-Feb-18	SW	0	N	
District of St. Mary's	Municipality of the District of St. Mary's Land Use Bylaw	39173	15-Feb-18	P	0	N	
District of St. Mary's	Municipality of the District of St. Mary's Land Use Bylaw	39173	15-Feb-18	R	0.5	Y	Agriculture is permitted with a development agreement
District of St. Mary's	Municipality of the District of St. Mary's Land Use Bylaw	39173	15-Feb-18	VD	0.5	Y	Agriculture is permitted with a development agreement
District of St. Mary's	Municipality of the District of St. Mary's Land Use Bylaw	39173	15-Feb-18	SL	0	N	
District of St. Mary's	Municipality of the District of St. Mary's Land Use Bylaw	39173	15-Feb-18	ST	0	N	
District of St. Mary's	Municipality of the District of St. Mary's Land Use Bylaw	39173	15-Feb-18	SG	0	N	
District of St. Mary's	Municipality of the District of St. Mary's Land Use Bylaw	39173	15-Feb-18	PB	0	N	

AgriRisk Project: Municipality of the District of Shelburne - Land Use Planning Matrix

Municipality	By-law	Amended to	Date Accessed	Zone	Policy Score	Permits New Agricultural Use	Comments
District of Shelburne	Municipality of the District of Shelburne Land Use Bylaw L-101	Sep-15	26-Jan-18	GD	0.5	Y	All developments permitted
District of Shelburne	Municipality of the District of Shelburne Land Use Bylaw L-101	Sep-15	26-Jan-18	SA	0.5	Y	All developments permitted except utility scale wind turbines
District of Shelburne	Municipality of the District of Shelburne Land Use Bylaw L-101	Sep-15	26-Jan-18	W	0.5	Y	Permitted amongst other uses

AgriRisk Project: Municipality of the District of Lunenburg - Land Use Planning Matrix

Municipality	By-law	Amended to	Date Accessed	Zone	Policy Score	Permits New Agricultural Use	Comments
District of Lunenburg	Princes Inlet Land Use By-law	Jun-16	10-Nov-17	R-H	0.5	Y	Agriculture is permitted amongst other uses
District of Lunenburg	Princes Inlet Land Use By-law	Jun-16	10-Nov-17	R-CO	0.5	Y	Agriculture is permitted amongst other uses
District of Lunenburg	Princes Inlet Land Use By-law	Jun-16	10-Nov-17	TR	0	N	
District of Lunenburg	Princes Inlet Land Use By-law	Jun-16	10-Nov-17	ES	0	N	No uses permitted
District of Lunenburg	Princes Inlet Land Use By-law	Jun-16	10-Nov-17	I	0	N	
District of Lunenburg	Lunenburg Municipal Industrial Zone Land Use By-law	May-11	10-Nov-17	MR	0	N	
District of Lunenburg	Lunenburg Municipal Industrial Zone Land Use By-law	May-11	10-Nov-17	LMI	0	N	
District of Lunenburg	Oakland Land Use By-law	Mar-16	10-Nov-17	RU	0.5	Y	Agriculture is permitted amongst other uses
District of Lunenburg	Oakland Land Use By-law	Mar-16	10-Nov-17	PWA	0	N	
District of Lunenburg	Oakland Land Use By-law	Mar-16	10-Nov-17	ENV	0	N	
District of Lunenburg	Oakland Land Use By-law	Mar-16	10-Nov-17	OS	0	N	
District of Lunenburg	Oakland Land Use By-law	Mar-16	10-Nov-17	TR	0	N	
District of Lunenburg	Oakland Land Use By-law	Mar-16	10-Nov-17	I	0	N	
District of Lunenburg	Osprey Village Land Use By-law Consolodated Edition	Mar-16	10-Nov-17	LI	0	N	
District of Lunenburg	Osprey Village Land Use By-law Consolodated Edition	Mar-16	10-Nov-17	VC	0	N	
District of Lunenburg	Osprey Village Land Use By-law Consolodated Edition	Mar-16	10-Nov-17	GC	0	N	
District of Lunenburg	Osprey Village Land Use By-law Consolodated Edition	Mar-16	10-Nov-17	MU	0	N	
District of Lunenburg	Osprey Village Land Use By-law Consolodated Edition	Mar-16	10-Nov-17	OS	0	N	
District of Lunenburg	Osprey Village Land Use By-law Consolodated Edition	Mar-16	10-Nov-17	IN	0	N	
District of Lunenburg	Osprey Village Land Use By-law Consolodated Edition	Mar-16	10-Nov-17	TR	0	N	
District of Lunenburg	Osprey Village Land Use By-law Consolodated Edition	Mar-16	10-Nov-17	ES	0	N	
District of Lunenburg	Village of Hebbville Land Use Bylaw	Feb-17	10-Nov-17	TR	0	N	
District of Lunenburg	Village of Hebbville Land Use Bylaw	Feb-17	10-Nov-17	HDR	0	N	
District of Lunenburg	Village of Hebbville Land Use Bylaw	Feb-17	10-Nov-17	GC	0	N	
District of Lunenburg	Village of Hebbville Land Use Bylaw	Feb-17	10-Nov-17	LI	0	N	
District of Lunenburg	Village of Hebbville Land Use Bylaw	Feb-17	10-Nov-17	RU	0.5	Y	Agriculture is permitted amongst other uses
District of Lunenburg	Village of Hebbville Land Use Bylaw	Feb-17	10-Nov-17	I	0	N	
District of Lunenburg	Village of Hebbville Land Use Bylaw	Feb-17	10-Nov-17	PWA	0	N	
District of Lunenburg	Riverport and District - Land Use By-law	Mar-16	10-Nov-17	RU-3	0.5	Y	Agriculture is permitted amongst other uses
District of Lunenburg	Riverport and District - Land Use By-law	Mar-16	10-Nov-17	ES	0	N	
District of Lunenburg	Riverport and District - Land Use By-law	Mar-16	10-Nov-17	I	0	N	

AgriRisk Project: Municipality of the District of Barrington - Land Use Planning Matrix

Municipality	By-law	Amended to	Date Accessed	Zone	Policy Score	Permits New Agricultural Use	Comments
District of West Hants	Municipality of the District of West Hants Land Use Bylaw	Sep-16	09-Jan-18	R-1	0	N	
District of West Hants	Municipality of the District of West Hants Land Use Bylaw	Sep-16	09-Jan-18	R-2	0	N	
District of West Hants	Municipality of the District of West Hants Land Use Bylaw	Sep-16	09-Jan-18	R-3	0	N	
District of West Hants	Municipality of the District of West Hants Land Use Bylaw	Sep-16	09-Jan-18	R-4	0	N	
District of West Hants	Municipality of the District of West Hants Land Use Bylaw	Sep-16	09-Jan-18	MHP	0	N	
District of West Hants	Municipality of the District of West Hants Land Use Bylaw	Sep-16	09-Jan-18	GC	0	N	
District of West Hants	Municipality of the District of West Hants Land Use Bylaw	Sep-16	09-Jan-18	HC	0	N	
District of West Hants	Municipality of the District of West Hants Land Use Bylaw	Sep-16	09-Jan-18	LC	0	N	
District of West Hants	Municipality of the District of West Hants Land Use Bylaw	Sep-16	09-Jan-18	RC	0	N	
District of West Hants	Municipality of the District of West Hants Land Use Bylaw	Sep-16	09-Jan-18	RecC	0	N	
District of West Hants	Municipality of the District of West Hants Land Use Bylaw	Sep-16	09-Jan-18	P/Ag	1	Y	Prioritizes agricultural use and permits some other uses
District of West Hants	Municipality of the District of West Hants Land Use Bylaw	Sep-16	09-Jan-18	AR-2	1	Y	Prioritizes agricultural use and permits some other uses
District of West Hants	Municipality of the District of West Hants Land Use Bylaw	Sep-16	09-Jan-18	AR-3	1	Y	Prioritizes agricultural use and permits some other uses
District of West Hants	Municipality of the District of West Hants Land Use Bylaw	Sep-16	09-Jan-18	GR	0.5	Y	Permits agricultural uses amongst many uses
District of West Hants	Municipality of the District of West Hants Land Use Bylaw	Sep-16	09-Jan-18	MR	0.5	Y	Permits agricultural uses amongst many uses
District of West Hants	Municipality of the District of West Hants Land Use Bylaw	Sep-16	09-Jan-18	W	0.5	Y	Permits some agricultural uses (including growing)
District of West Hants	Municipality of the District of West Hants Land Use Bylaw	Sep-16	09-Jan-18	LF	0	N	
District of West Hants	Municipality of the District of West Hants Land Use Bylaw	Sep-16	09-Jan-18	M-1	0	N	
District of West Hants	Municipality of the District of West Hants Land Use Bylaw	Sep-16	09-Jan-18	M-2	0	N	
District of West Hants	Municipality of the District of West Hants Land Use Bylaw	Sep-16	09-Jan-18	LI	0	N	
District of West Hants	Municipality of the District of West Hants Land Use Bylaw	Sep-16	09-Jan-18	LI-1	0	N	
District of West Hants	Municipality of the District of West Hants Land Use Bylaw	Sep-16	09-Jan-18	LI-2	0	N	
District of West Hants	Municipality of the District of West Hants Land Use Bylaw	Sep-16	09-Jan-18	LI-3	0	N	
District of West Hants	Municipality of the District of West Hants Land Use Bylaw	Sep-16	09-Jan-18	I	0	N	
District of West Hants	Municipality of the District of West Hants Land Use Bylaw	Sep-16	09-Jan-18	OS	0	N	
District of West Hants	Municipality of the District of West Hants Land Use Bylaw	Sep-16	09-Jan-18	Dyke Overlay	Keep policy score of zone beneath		
District of West Hants	Municipality of the District of West Hants Land Use Bylaw	Sep-16	09-Jan-18	R-1	0	N	
District of West Hants	Municipality of the District of West Hants Land Use Bylaw	Sep-16	09-Jan-18	R-2	0	N	
District of West Hants	Municipality of the District of West Hants Land Use Bylaw	Sep-16	09-Jan-18	R-3	0	N	
District of West Hants	Municipality of the District of West Hants Land Use Bylaw	Sep-16	09-Jan-18	C	0	N	
District of West Hants	Municipality of the District of West Hants Land Use Bylaw	Sep-16	09-Jan-18	M	0	N	
District of West Hants	Municipality of the District of West Hants Land Use Bylaw	Sep-16	09-Jan-18	I	0	N	
District of West Hants	Municipality of the District of West Hants Land Use Bylaw	Sep-16	09-Jan-18	ROS	0	N	
District of West Hants	Municipality of the District of West Hants Land Use Bylaw	Sep-16	09-Jan-18	COS	0.5	Y	Agriculture but no structures permitted

AgriRisk Project: Municipality of the District of Yarmouth - Land Use Planning Matrix

Municipality	By-law	Amended to	Date Accessed	Zone	Policy Score	Permits New Agricultural Use	Comments
District of Yarmouth	Municipality of the District of Yarmouth Land Use By-law	Oct-13	10-Dec-17	RG	0.5	Y	Agriculture is permitted amongst other uses
District of Yarmouth	Municipality of the District of Yarmouth Land Use By-law	Oct-13	10-Dec-17	CG	0	N	
District of Yarmouth	Municipality of the District of Yarmouth Land Use By-law	Oct-13	10-Dec-17	CR	0	N	
District of Yarmouth	Municipality of the District of Yarmouth Land Use By-law	Oct-13	10-Dec-17	BIP	0	N	
District of Yarmouth	Municipality of the District of Yarmouth Land Use By-law	Oct-13	10-Dec-17	RL	0.5	Y	Agriculture is permitted amongst other uses
District of Yarmouth	Municipality of the District of Yarmouth Land Use By-law	Oct-13	10-Dec-17	CL	0	N	
District of Yarmouth	Municipality of the District of Yarmouth Land Use By-law	Oct-13	10-Dec-17	HR	0.5	Y	Agriculture is permitted amongst other uses
District of Yarmouth	Municipality of the District of Yarmouth Land Use By-law	Oct-13	10-Dec-17	HC	0	N	
District of Yarmouth	Municipality of the District of Yarmouth Land Use By-law	Oct-13	10-Dec-17	RD	0.5	Y	Agriculture is permitted amongst other uses
District of Yarmouth	Municipality of the District of Yarmouth Land Use By-law	Oct-13	10-Dec-17	RC	0	N	
District of Yarmouth	Municipality of the District of Yarmouth Land Use By-law	Oct-13	10-Dec-17	RI	0	N	
District of Yarmouth	Municipality of the District of Yarmouth Land Use By-law	Oct-13	10-Dec-17	AP	0	N	
District of Yarmouth	Municipality of the District of Yarmouth Land Use By-law	Oct-13	10-Dec-17	ANR	0	N	
District of Yarmouth	Municipality of the District of Yarmouth Land Use By-law	Oct-13	10-Dec-17	MI	0	N	
District of Yarmouth	Municipality of the District of Yarmouth Land Use By-law	Oct-13	10-Dec-17	CV	0.5	Y	Agriculture is permitted amongst other uses
District of Yarmouth	Municipality of the District of Yarmouth Land Use By-law	Oct-13	10-Dec-17	LGW	0	N	
District of Yarmouth	Municipality of the District of Yarmouth Land Use By-law	Oct-13	10-Dec-17	LH	0	N	
District of Yarmouth	Municipality of the District of Yarmouth Land Use By-law	Oct-13	10-Dec-17	REC	0	N	
District of Yarmouth	Municipality of the District of Yarmouth Land Use By-law	Oct-13	10-Dec-17	CW	0	N	
District of Yarmouth	Municipality of the District of Yarmouth Land Use By-law	Oct-13	10-Dec-17	DL	0.5	Y	Agricultural use is permitted. Not other uses or structures
District of Yarmouth	Municipality of the District of Yarmouth Land Use By-law	Oct-13	10-Dec-17	FP	0	N	

AgriRisk Project: Municipality of the Region of Queens - Land Use Planning Matrix

Municipality	By-law	Amended to	Date Accessed	Zone	Policy Score	Permits New Agricultural Use
Region of Queens	Region of Queens Municipality Land Use By-law	Sep-09	29-Dec-17	R1	0	N
Region of Queens	Region of Queens Municipality Land Use By-law	Sep-09	29-Dec-17	R2	0	N
Region of Queens	Region of Queens Municipality Land Use By-law	Sep-09	29-Dec-17	R3	0	N
Region of Queens	Region of Queens Municipality Land Use By-law	Sep-09	29-Dec-17	R4	0	N
Region of Queens	Region of Queens Municipality Land Use By-law	Sep-09	29-Dec-17	R5	0.5	Y
Region of Queens	Region of Queens Municipality Land Use By-law	Sep-09	29-Dec-17	R6	0.5	Y
Region of Queens	Region of Queens Municipality Land Use By-law	Sep-09	29-Dec-17	R7	0	N
Region of Queens	Region of Queens Municipality Land Use By-law	Sep-09	29-Dec-17	C1	0	N
Region of Queens	Region of Queens Municipality Land Use By-law	Sep-09	29-Dec-17	C2	0	N
Region of Queens	Region of Queens Municipality Land Use By-law	Sep-09	29-Dec-17	C3	0	N
Region of Queens	Region of Queens Municipality Land Use By-law	Sep-09	29-Dec-17	C4	0	N
Region of Queens	Region of Queens Municipality Land Use By-law	Sep-09	29-Dec-17	C5	0.5	Y
Region of Queens	Region of Queens Municipality Land Use By-law	Sep-09	29-Dec-17	M1	0	N
Region of Queens	Region of Queens Municipality Land Use By-law	Sep-09	29-Dec-17	M2	0	N
Region of Queens	Region of Queens Municipality Land Use By-law	Sep-09	29-Dec-17	M3	0	N
Region of Queens	Region of Queens Municipality Land Use By-law	Sep-09	29-Dec-17	P1	0	N
Region of Queens	Region of Queens Municipality Land Use By-law	Sep-09	29-Dec-17	I1	0	N
Region of Queens	Region of Queens Municipality Land Use By-law	Sep-09	29-Dec-17	O1	0	N
Region of Queens	Region of Queens Municipality Land Use By-law	Sep-09	29-Dec-17	W1	0	N

AgriRisk Project: Town of Amherst - Land Use Planning Matrix

Municipality	By-law	Amended to	Date Accessed	Zone	Policy Score	Permits New Agricultural Use	Comments
Town of Amherst	Town of Amherst Land Use Bylaw- Bylaw P-2	Jan-15	20-Feb-18	General Residential Zone	0	N	
Town of Amherst	Town of Amherst Land Use Bylaw- Bylaw P-3	Jan-15	20-Feb-18	Low Density Residential Zone	0	N	
Town of Amherst	Town of Amherst Land Use Bylaw- Bylaw P-4	Jan-15	20-Feb-18	Mini Home Zone	0	N	
Town of Amherst	Town of Amherst Land Use Bylaw- Bylaw P-5	Jan-15	20-Feb-18	Highway Commercial Zone	0	N	Existing agricultural uses allowed
Town of Amherst	Town of Amherst Land Use Bylaw- Bylaw P-6	Jan-15	20-Feb-18	Downtown Zone	0	N	
Town of Amherst	Town of Amherst Land Use Bylaw- Bylaw P-7	Jan-15	20-Feb-18	Core Area District	0	N	
Town of Amherst	Town of Amherst Land Use Bylaw- Bylaw P-8	Jan-15	20-Feb-18	Limited Commercial Zone	0	N	
Town of Amherst	Town of Amherst Land Use Bylaw- Bylaw P-9	Jan-15	20-Feb-18	Neighbourhood Commercial	0	N	
Town of Amherst	Town of Amherst Land Use Bylaw- Bylaw P-10	Jan-15	20-Feb-18	Industrial Zone	0	N	
Town of Amherst	Town of Amherst Land Use Bylaw- Bylaw P-11	Jan-15	20-Feb-18	Comprehensive Development District	0	N	
Town of Amherst	Town of Amherst Land Use Bylaw- Bylaw P-12	Jan-15	20-Feb-18	Institutional Zone	0	N	
Town of Amherst	Town of Amherst Land Use Bylaw- Bylaw P-13	Jan-15	20-Feb-18	Parks and Open Space Zone	0	N	
Town of Amherst	Town of Amherst Land Use Bylaw- Bylaw P-14	Jan-15	20-Feb-18	Flood Plain Zone	0	N	

AgriRisk Project: Town of Annapolis Royal - Land Use Planning Matrix

Municipality	By-law	Amended to	Date Accessed	Zone	Policy Score	Permits New Agricultural Use	Comments
Town of Annapolis Royal	Land Use By-Law of the Town of Annapolis Royal	Dec-12	05-Feb-18	R1	0	N	
Town of Annapolis Royal	Land Use By-Law of the Town of Annapolis Royal	Dec-12	05-Feb-18	R2	0	N	
Town of Annapolis Royal	Land Use By-Law of the Town of Annapolis Royal	Dec-12	05-Feb-18	R3	0	N	
Town of Annapolis Royal	Land Use By-Law of the Town of Annapolis Royal	Dec-12	05-Feb-18	C1	0	N	
Town of Annapolis Royal	Land Use By-Law of the Town of Annapolis Royal	Dec-12	05-Feb-18	C2	0	N	Could sell grapes within zone if farm close to Town
Town of Annapolis Royal	Land Use By-Law of the Town of Annapolis Royal	Dec-12	05-Feb-18	C3	0	N	
Town of Annapolis Royal	Land Use By-Law of the Town of Annapolis Royal	Dec-12	05-Feb-18	HI1	0	N	
Town of Annapolis Royal	Land Use By-Law of the Town of Annapolis Royal	Dec-12	05-Feb-18	WF1	0	N	
Town of Annapolis Royal	Land Use By-Law of the Town of Annapolis Royal	Dec-12	05-Feb-18	WF2	0	N	
Town of Annapolis Royal	Land Use By-Law of the Town of Annapolis Royal	Dec-12	05-Feb-18	I1	0	N	
Town of Annapolis Royal	Land Use By-Law of the Town of Annapolis Royal	Dec-12	05-Feb-18	O1	0	N	
Town of Annapolis Royal	Land Use By-Law of the Town of Annapolis Royal	Dec-12	05-Feb-18	ESA	0.5	Y	Uses permitted: Non-polluting agricultural uses that do not require permanent buildings; crop farming, grazing, and pastureage; farm demonstration sites
Town of Annapolis Royal	Land Use By-Law of the Town of Annapolis Royal	Dec-12	05-Feb-18	HG	0	N	
Town of Annapolis Royal	Land Use By-Law of the Town of Annapolis Royal	Dec-12	05-Feb-18	MH	0	N	

AgriRisk Project: Town of Antigonish - Land Use Planning Matrix

Municipality	By-law	Amended to	Date Accessed	Zone	Policy Score	Permits New Agricultural Use	Comments
Town of Antigonish	Town of Antigonish Land Use By-law	-	27-Feb-18	R1	0	N	
Town of Antigonish	Town of Antigonish Land Use By-law	-	27-Feb-18	R2	0	N	
Town of Antigonish	Town of Antigonish Land Use By-law	-	27-Feb-18	R3	0	N	
Town of Antigonish	Town of Antigonish Land Use By-law	-	27-Feb-18	R4	0	N	
Town of Antigonish	Town of Antigonish Land Use By-law	-	27-Feb-18	RH	0.5	Y	Existing residential uses and agricultural uses permitted
Town of Antigonish	Town of Antigonish Land Use By-law	-	27-Feb-18	RWS			
Town of Antigonish	Town of Antigonish Land Use By-law	-	27-Feb-18	C1	0	N	
Town of Antigonish	Town of Antigonish Land Use By-law	-	27-Feb-18	C2	0	N	
Town of Antigonish	Town of Antigonish Land Use By-law	-	27-Feb-18	C2-J	0	N	
Town of Antigonish	Town of Antigonish Land Use By-law	-	27-Feb-18	C3	0	N	
Town of Antigonish	Town of Antigonish Land Use By-law	-	27-Feb-18	C4	0	N	
Town of Antigonish	Town of Antigonish Land Use By-law	-	27-Feb-18	P1	0	N	
Town of Antigonish	Town of Antigonish Land Use By-law	-	27-Feb-18	CLI	0	N	
Town of Antigonish	Town of Antigonish Land Use By-law	-	27-Feb-18	I	0	N	
Town of Antigonish	Town of Antigonish Land Use By-law	-	27-Feb-18	O1	0	N	
Town of Antigonish	Town of Antigonish Land Use By-law	-	27-Feb-18	2	0.5	Y	Agricultural uses that do not include structures
Town of Antigonish	Town of Antigonish Land Use By-law	-	27-Feb-18	3			

AgriRisk Project: Town of Berwick - Land Use Planning Matrix

Municipality	By-law	Amended to	Date Accessed	Zone	Policy Score	Permits New Agricultural Use	Comments
Town of Berwick	Town of Berwick Land Use By-Law	Oct-12	05-Feb-18	R1	0	N	
Town of Berwick	Town of Berwick Land Use By-Law	Oct-12	05-Feb-18	R2	0	N	
Town of Berwick	Town of Berwick Land Use By-Law	Oct-12	05-Feb-18	R3	0	N	
Town of Berwick	Town of Berwick Land Use By-Law	Oct-12	05-Feb-18	RCDD	0	N	
Town of Berwick	Town of Berwick Land Use By-Law	Oct-12	05-Feb-18	C1	0	N	
Town of Berwick	Town of Berwick Land Use By-Law	Oct-12	05-Feb-18	C2	0	N	
Town of Berwick	Town of Berwick Land Use By-Law	Oct-12	05-Feb-18	GMU1	0	N	
Town of Berwick	Town of Berwick Land Use By-Law	Oct-12	05-Feb-18	I1	0	N	
Town of Berwick	Town of Berwick Land Use By-Law	Oct-12	05-Feb-18	A1	1	Y	All permitted uses related to agriculture
Town of Berwick	Town of Berwick Land Use By-Law	Oct-12	05-Feb-18	OS1	0	N	
Town of Berwick	Town of Berwick Land Use By-Law	Oct-12	05-Feb-18	OS2	0.5	Y	No permanent buildings allowed

AgriRisk Project: Municipality of the Town of Bridgewater - Land Use Planning Matrix

Municipality	By-law	Amended to	Date Accessed	Zone	Policy Score	Permits New Agricultural Use	Comments
Town of Bridgewater	Land use by-law: Town of Bridgewater	May-17	18-Nov-17	R1	0	N	
Town of Bridgewater	Land use by-law: Town of Bridgewater	May-17	18-Nov-17	R2	0	N	
Town of Bridgewater	Land use by-law: Town of Bridgewater	May-17	18-Nov-17	R3	0	N	
Town of Bridgewater	Land use by-law: Town of Bridgewater	May-17	18-Nov-17	R4	0	N	
Town of Bridgewater	Land use by-law: Town of Bridgewater	May-17	18-Nov-17	R5	0	N	
Town of Bridgewater	Land use by-law: Town of Bridgewater	May-17	18-Nov-17	R6	0	N	
Town of Bridgewater	Land use by-law: Town of Bridgewater	May-17	18-Nov-17	R7	0	N	
Town of Bridgewater	Land use by-law: Town of Bridgewater	May-17	18-Nov-17	C1	0	N	
Town of Bridgewater	Land use by-law: Town of Bridgewater	May-17	18-Nov-17	C2	0	N	
Town of Bridgewater	Land use by-law: Town of Bridgewater	May-17	18-Nov-17	C3	0	N	
Town of Bridgewater	Land use by-law: Town of Bridgewater	May-17	18-Nov-17	C4	0	N	
Town of Bridgewater	Land use by-law: Town of Bridgewater	May-17	18-Nov-17	C5	0	N	
Town of Bridgewater	Land use by-law: Town of Bridgewater	May-17	18-Nov-17	C6	0	N	
Town of Bridgewater	Land use by-law: Town of Bridgewater	May-17	18-Nov-17	C7	0	N	
Town of Bridgewater	Land use by-law: Town of Bridgewater	May-17	18-Nov-17	C8	0	N	
Town of Bridgewater	Land use by-law: Town of Bridgewater	May-17	18-Nov-17	I	0	N	
Town of Bridgewater	Land use by-law: Town of Bridgewater	May-17	18-Nov-17	I2	0	N	
Town of Bridgewater	Land use by-law: Town of Bridgewater	May-17	18-Nov-17	P	0	N	
Town of Bridgewater	Land use by-law: Town of Bridgewater	May-17	18-Nov-17	REC	0	N	
Town of Bridgewater	Land use by-law: Town of Bridgewater	May-17	18-Nov-17	CON	0	N	
Town of Bridgewater	Land use by-law: Town of Bridgewater	May-17	18-Nov-17	AG	0.5	Y	Agriculture is permitted but not protected. Future land use map does not have agricultural areas.
Town of Bridgewater	Land use by-law: Town of Bridgewater	May-17	18-Nov-17	M1	0	N	
Town of Bridgewater	Land use by-law: Town of Bridgewater	May-17	18-Nov-17	M2	0	N	

AgriRisk Project: Town of Clark's Harbour - Land Use Planning Matrix

Municipality	By-law	Amended to	Date Accessed	Zone	Policy Score	Permits New Agricultural Use	Comments
Town of Clark's Harbo	Town of Clark's Harbour Land Use By-La	2013	26-Feb-18	R	0	N	
Town of Clark's Harbo	Town of Clark's Harbour Land Use By-La	2013	26-Feb-18	C	0	N	
Town of Clark's Harbo	Town of Clark's Harbour Land Use By-La	2013	26-Feb-18	I	0	N	
Town of Clark's Harbo	Town of Clark's Harbour Land Use By-La	2013	26-Feb-18	O	0	N	

AgriRisk Project: Town of Digby - Land Use Planning Matrix

Municipality	By-law	Amended to	Date Accessed	Zone	Policy Score	Permits New Agricultural Use	Comments
Town of Digby	Town of Digby Land Use By-Law	May-12	12-Feb-18	RLD	0	N	
Town of Digby	Town of Digby Land Use By-Law	May-12	12-Feb-18	RMD	0	N	
Town of Digby	Town of Digby Land Use By-Law	May-12	12-Feb-18	RMU	0	N	
Town of Digby	Town of Digby Land Use By-Law	May-12	12-Feb-18	RCDD	0	N	
Town of Digby	Town of Digby Land Use By-Law	May-12	12-Feb-18	CD	0	N	
Town of Digby	Town of Digby Land Use By-Law	May-12	12-Feb-18	CG	0	N	
Town of Digby	Town of Digby Land Use By-Law	May-12	12-Feb-18	CR	0	N	
Town of Digby	Town of Digby Land Use By-Law	May-12	12-Feb-18	IND	0	N	
Town of Digby	Town of Digby Land Use By-Law	May-12	12-Feb-18	INS	0	N	
Town of Digby	Town of Digby Land Use By-Law	May-12	12-Feb-18	OS	0	N	
Town of Digby	Town of Digby Land Use By-Law	May-12	12-Feb-18	WHP	0	N	
Town of Digby	Town of Digby Land Use By-Law	May-12	12-Feb-18	WFP	0	N	

AgriRisk Project: Municipality of the Town of Kentville - Land Use Planning Matrix

Municipality	By-law	Amended to	Date Accessed	Zone	Policy Score	Permits New Agricultural Use	Comments
Town of Kentville	Town of Kentville Land Use Bylaw	Apr-06	19-Nov-17	Zone A	0	N	
Town of Kentville	Town of Kentville Land Use Bylaw	Apr-06	19-Nov-17	Zone B	0	N	Listed as prohibited
Town of Kentville	Town of Kentville Land Use Bylaw	Apr-06	19-Nov-17	Zone C	0	N	
Town of Kentville	Town of Kentville Land Use Bylaw	Apr-06	19-Nov-17	Zone D	0	N	
Town of Kentville	Town of Kentville Land Use Bylaw	Apr-06	19-Nov-17	R-1	0	N	
Town of Kentville	Town of Kentville Land Use Bylaw	Apr-06	19-Nov-17	R-2	0	N	
Town of Kentville	Town of Kentville Land Use Bylaw	Apr-06	19-Nov-17	R-3	0	N	
Town of Kentville	Town of Kentville Land Use Bylaw	Apr-06	19-Nov-17	R-3A	0	N	
Town of Kentville	Town of Kentville Land Use Bylaw	Apr-06	19-Nov-17	TH	0	N	
Town of Kentville	Town of Kentville Land Use Bylaw	Apr-06	20-Nov-17	RF	0.5	Y	Agriculture is permitted amongst other uses
Town of Kentville	Town of Kentville Land Use Bylaw	Apr-06	21-Nov-17	C-1	0	N	
Town of Kentville	Town of Kentville Land Use Bylaw	Apr-06	22-Nov-17	C-2	0	N	
Town of Kentville	Town of Kentville Land Use Bylaw	Apr-06	23-Nov-17	C-3	0	N	
Town of Kentville	Town of Kentville Land Use Bylaw	Apr-06	24-Nov-17	M-1	0	N	
Town of Kentville	Town of Kentville Land Use Bylaw	Apr-06	25-Nov-17	I-1	0	N	
Town of Kentville	Town of Kentville Land Use Bylaw	Apr-06	26-Nov-17	P	0	N	
Town of Kentville	Town of Kentville Land Use Bylaw	Apr-06	27-Nov-17	SU	0	N	
Town of Kentville	Town of Kentville Land Use Bylaw	Apr-06	28-Nov-17	O-1	0.5	Y	Crop farming is permitted amongst other uses

AgriRisk Project: Town of Lockport - Land Use Planning Matrix

Municipality	By-law	Amended to	Date Accessed	Zone	Policy Score	Permits New Agricultural Use	Comments
Town of Lockport	The Town of Lockport Land Use By-Law	Nov-04	26-Feb-18	R-1	0	N	
Town of Lockport	The Town of Lockport Land Use By-Law	Nov-04	26-Feb-18	R-2	0	N	
Town of Lockport	The Town of Lockport Land Use By-Law	Nov-04	26-Feb-18	R-3	0.5	Y	Agricultural use allowed amongst other uses
Town of Lockport	The Town of Lockport Land Use By-Law	Nov-04	26-Feb-18	C-1	0	N	
Town of Lockport	The Town of Lockport Land Use By-Law	Nov-04	26-Feb-18	C-2	0	N	
Town of Lockport	The Town of Lockport Land Use By-Law	Nov-04	26-Feb-18	M-1	0	N	
Town of Lockport	The Town of Lockport Land Use By-Law	Nov-04	26-Feb-18	OS-1	0	N	

AgriRisk Project: Town of Lunenburg - Land Use Planning Matrix

Municipality	By-law	Amended to	Date Accessed	Zone	Policy Score	Permits New Agricultural Use	Comments
Town of Lunenburg	Town of Lunenburg Land-Use By-Law	Sep-15	05-Feb-18	OTR	0	N	
Town of Lunenburg	Town of Lunenburg Land-Use By-Law	Sep-15	05-Feb-18	R	0	N	
Town of Lunenburg	Town of Lunenburg Land-Use By-Law	Sep-15	05-Feb-18	MDR	0	N	
Town of Lunenburg	Town of Lunenburg Land-Use By-Law	Sep-15	05-Feb-18	RR	0.5	Y	No livestock or feedlots
Town of Lunenburg	Town of Lunenburg Land-Use By-Law	Sep-15	05-Feb-18	GC	0	N	
Town of Lunenburg	Town of Lunenburg Land-Use By-Law	Sep-15	05-Feb-18	RC	0	N	
Town of Lunenburg	Town of Lunenburg Land-Use By-Law	Sep-15	05-Feb-18	HC	0	N	
Town of Lunenburg	Town of Lunenburg Land-Use By-Law	Sep-15	05-Feb-18	CS	0	N	
Town of Lunenburg	Town of Lunenburg Land-Use By-Law	Sep-15	05-Feb-18	TM	0	N	
Town of Lunenburg	Town of Lunenburg Land-Use By-Law	Sep-15	05-Feb-18	I	0	N	
Town of Lunenburg	Town of Lunenburg Land-Use By-Law	Sep-15	05-Feb-18	MI	0	N	
Town of Lunenburg	Town of Lunenburg Land-Use By-Law	Sep-15	05-Feb-18	RI	0.5	Y	
Town of Lunenburg	Town of Lunenburg Land-Use By-Law	Sep-15	05-Feb-18	INS	0	N	
Town of Lunenburg	Town of Lunenburg Land-Use By-Law	Sep-15	05-Feb-18	REC	0	N	
Town of Lunenburg	Town of Lunenburg Land-Use By-Law	Sep-15	05-Feb-18	OS	0	N	

AgriRisk Project: Town of Mahone Bay - Land Use Planning Matrix

Municipality	By-law	Amended to	Date Accessed	Zone	Policy Score	Permits New Agricultural Use	Comments
Town of Mahone Bay	Town of Mahone Bay Land Use By-Law	Aug-17	12-Feb-18	R	0	N	
Town of Mahone Bay	Town of Mahone Bay Land Use By-Law	Aug-17	12-Feb-18	RU	0	N	Allows forestry but not agriculture
Town of Mahone Bay	Town of Mahone Bay Land Use By-Law	Aug-17	12-Feb-18	C	0	N	
Town of Mahone Bay	Town of Mahone Bay Land Use By-Law	Aug-17	12-Feb-18	HC	0	N	
Town of Mahone Bay	Town of Mahone Bay Land Use By-Law	Aug-17	12-Feb-18	RC	0	N	
Town of Mahone Bay	Town of Mahone Bay Land Use By-Law	Aug-17	12-Feb-18	CS	0	N	
Town of Mahone Bay	Town of Mahone Bay Land Use By-Law	Aug-17	12-Feb-18	ID	0	N	
Town of Mahone Bay	Town of Mahone Bay Land Use By-Law	Aug-17	12-Feb-18	IN	0	N	
Town of Mahone Bay	Town of Mahone Bay Land Use By-Law	Aug-17	12-Feb-18	P	0	N	
Town of Mahone Bay	Town of Mahone Bay Land Use By-Law	Aug-17	12-Feb-18	OS	0	N	

AgriRisk Project: Town of Middleton - Land Use Planning Matrix

Municipality	By-law	Amended to	Date Accessed	Zone	Policy Score	Permits New Agricultural Use	Comments
Town of Middleton	Land Use By-Law of the Town of Middleton	May-14	05-Feb-18	PL	0.5	Y	Uses permitted: agricultural uses not requiring permanent structures
Town of Middleton	Land Use By-Law of the Town of Middleton	May-14	05-Feb-18	R	0.5	Y	Agriculture- permitted use
Town of Middleton	Land Use By-Law of the Town of Middleton	May-14	05-Feb-18	RR	0	N	
Town of Middleton	Land Use By-Law of the Town of Middleton	May-14	05-Feb-18	RD	0.5	Y	Agriculture- permitted use
Town of Middleton	Land Use By-Law of the Town of Middleton	May-14	05-Feb-18	BD	0	N	
Town of Middleton	Land Use By-Law of the Town of Middleton	May-14	05-Feb-18	HC	0	N	
Town of Middleton	Land Use By-Law of the Town of Middleton	May-14	05-Feb-18	M	0	N	
Town of Middleton	Land Use By-Law of the Town of Middleton	May-14	05-Feb-18	REC	0	N	
Town of Middleton	Land Use By-Law of the Town of Middleton	May-14	05-Feb-18	I	0	N	
Town of Middleton	Land Use By-Law of the Town of Middleton	May-14	05-Feb-18	MH	0	N	

AgriRisk Project: Town of Mulgrave - Land Use Planning Matrix

Municipality	By-law	Amended to	Date Accessed	Zone	Policy Score	Permits New Agricultural Use	Comments
Town of Mulgrave	Town of Mulgrave Land-Ue By-Law	Feb-11	27-Feb-18	R-1	0	N	
Town of Mulgrave	Town of Mulgrave Land-Ue By-Law	Feb-11	27-Feb-18	R-2	0	N	
Town of Mulgrave	Town of Mulgrave Land-Ue By-Law	Feb-11	27-Feb-18	R-3	0	N	
Town of Mulgrave	Town of Mulgrave Land-Ue By-Law	Feb-11	27-Feb-18	RR-1	0.5	Y	Agriculture permitted amongst other uses
Town of Mulgrave	Town of Mulgrave Land-Ue By-Law	Feb-11	27-Feb-18	C-1	0	N	
Town of Mulgrave	Town of Mulgrave Land-Ue By-Law	Feb-11	27-Feb-18	C-2	0	N	
Town of Mulgrave	Town of Mulgrave Land-Ue By-Law	Feb-11	27-Feb-18	M-1	0	N	
Town of Mulgrave	Town of Mulgrave Land-Ue By-Law	Feb-11	27-Feb-18	O-1	0	N	

AgriRisk Project: Town of New Glasgow - Land Use Planning Matrix

Municipality	By-law	Amended to	Date Accessed	Zone	Policy Score	Permits New Agricultural Use	Comments
Town of New Glasgow	Towns of New Glasgow, Pictou, Stellarton, Trenton and Westville (Common) Land Use By-law	Aug-16	27-Feb-18	RR	0.5	Y	Agricultural uses permitted among other uses
Town of New Glasgow	Towns of New Glasgow, Pictou, Stellarton, Trenton and Westville (Common) Land Use By-law	Aug-16	27-Feb-18	R1	0	N	Hobby Farms (but not feed lot operations, Bulk Storage, depots, chicken/pork farms, and agribusiness Uses such as a tannery, rendering plant, or equipment sale and rental)- non-commercial uses
Town of New Glasgow	Towns of New Glasgow, Pictou, Stellarton, Trenton and Westville (Common) Land Use By-law	Aug-16	27-Feb-18	R2	0	N	
Town of New Glasgow	Towns of New Glasgow, Pictou, Stellarton, Trenton and Westville (Common) Land Use By-law	Aug-16	27-Feb-18	R3	0	N	
Town of New Glasgow	Towns of New Glasgow, Pictou, Stellarton, Trenton and Westville (Common) Land Use By-law	Aug-16	27-Feb-18	R5	0	N	
Town of New Glasgow	Towns of New Glasgow, Pictou, Stellarton, Trenton and Westville (Common) Land Use By-law	Aug-16	27-Feb-18	C1	0	N	
Town of New Glasgow	Towns of New Glasgow, Pictou, Stellarton, Trenton and Westville (Common) Land Use By-law	Aug-16	27-Feb-18	C1-A	0	N	
Town of New Glasgow	Towns of New Glasgow, Pictou, Stellarton, Trenton and Westville (Common) Land Use By-law	Aug-16	27-Feb-18	C2	0	N	
Town of New Glasgow	Towns of New Glasgow, Pictou, Stellarton, Trenton and Westville (Common) Land Use By-law	Aug-16	27-Feb-18	C3	0	N	
Town of New Glasgow	Towns of New Glasgow, Pictou, Stellarton, Trenton and Westville (Common) Land Use By-law	Aug-16	27-Feb-18	C4	0	N	
Town of New Glasgow	Towns of New Glasgow, Pictou, Stellarton, Trenton and Westville (Common) Land Use By-law	Aug-16	27-Feb-18	C5	0	N	
Town of New Glasgow	Towns of New Glasgow, Pictou, Stellarton, Trenton and Westville (Common) Land Use By-law	Aug-16	27-Feb-18	FRA	0	N	
Town of New Glasgow	Towns of New Glasgow, Pictou, Stellarton, Trenton and Westville (Common) Land Use By-law	Aug-16	27-Feb-18	M1	0	N	
Town of New Glasgow	Towns of New Glasgow, Pictou, Stellarton, Trenton and Westville (Common) Land Use By-law	Aug-16	27-Feb-18	M2	0	N	
Town of New Glasgow	Towns of New Glasgow, Pictou, Stellarton, Trenton and Westville (Common) Land Use By-law	Aug-16	27-Feb-18	M3	0	N	
Town of New Glasgow	Towns of New Glasgow, Pictou, Stellarton, Trenton and Westville (Common) Land Use By-law	Aug-16	27-Feb-18	I	0	N	
Town of New Glasgow	Towns of New Glasgow, Pictou, Stellarton, Trenton and Westville (Common) Land Use By-law	Aug-16	27-Feb-18	P	0	N	
Town of New Glasgow	Towns of New Glasgow, Pictou, Stellarton, Trenton and Westville (Common) Land Use By-law	Aug-16	27-Feb-18	F	0	N	
Town of New Glasgow	Towns of New Glasgow, Pictou, Stellarton, Trenton and Westville (Common) Land Use By-law	Aug-16	27-Feb-18	W	0	N	
Town of New Glasgow	Towns of New Glasgow, Pictou, Stellarton, Trenton and Westville (Common) Land Use By-law	Aug-16	27-Feb-18	WS	0.5	Y	Non-intensive agricultural uses- excluding permanent buildings
Town of New Glasgow	Towns of New Glasgow, Pictou, Stellarton, Trenton and Westville (Common) Land Use By-law	Aug-16	27-Feb-18	AP	0	N	

AgriRisk Project: Town of Oxford - Land Use Planning Matrix

Municipality	By-law	Amended to	Date Accessed	Zone	Policy Score	Permits New Agricultural Use	Comments
Town of Oxford	Town of Oxford Land Use Bylaw	Jul-09	21-Feb-18	General Residential	0	N	
Town of Oxford	Town of Oxford Land Use Bylaw	Jul-09	21-Feb-18	Main Street Mixed-Use	0	N	
Town of Oxford	Town of Oxford Land Use Bylaw	Jul-09	21-Feb-18	Lower Main Street Mixed-Use	0	N	
Town of Oxford	Town of Oxford Land Use Bylaw	Jul-09	21-Feb-18	Oxford-East Mixed-Use	0	N	
Town of Oxford	Town of Oxford Land Use Bylaw	Jul-09	21-Feb-18	Downtown Commercial	0	N	
Town of Oxford	Town of Oxford Land Use Bylaw	Jul-09	21-Feb-18	Business Park, General	0	N	
Town of Oxford	Town of Oxford Land Use Bylaw	Jul-09	21-Feb-18	Business Park, Main Street	0	N	
Town of Oxford	Town of Oxford Land Use Bylaw	Jul-09	21-Feb-18	Rural Land Use	0.5	Y	Agriculture permitted on lots 4 hectares or larger
Town of Oxford	Town of Oxford Land Use Bylaw	Jul-09	21-Feb-18	River Philip Open Space	0.5	Y	Agriculture, general- use permitted among other uses- want low-impact agriculture

AgriRisk Project: Town of Pictou - Land Use Planning Matrix

Municipality	By-law	Amended to	Date Accessed	Zone	Policy Score	Permits New Agricultural Use	Comments
Town of Pictou	Towns of New Glasgow, Pictou, Stellarton, Trenton and Westville (Common) Land Use By-law	Aug-16	27-Feb-18	RR	0.5	Y	Agricultural uses permitted among other uses
Town of Pictou	Towns of New Glasgow, Pictou, Stellarton, Trenton and Westville (Common) Land Use By-law	Aug-16	27-Feb-18	R1	0	N	Hobby Farms (but not feed Lot operations, Bulk Storage, depots, chicken/pork farms, and agribusiness Uses such as a tannery, rendering plant, or equipment sale and rental)- non-commercial uses
Town of Pictou	Towns of New Glasgow, Pictou, Stellarton, Trenton and Westville (Common) Land Use By-law	Aug-16	27-Feb-18	R2	0	N	
Town of Pictou	Towns of New Glasgow, Pictou, Stellarton, Trenton and Westville (Common) Land Use By-law	Aug-16	27-Feb-18	R3	0	N	
Town of Pictou	Towns of New Glasgow, Pictou, Stellarton, Trenton and Westville (Common) Land Use By-law	Aug-16	27-Feb-18	R5	0	N	
Town of Pictou	Towns of New Glasgow, Pictou, Stellarton, Trenton and Westville (Common) Land Use By-law	Aug-16	27-Feb-18	C1	0	N	
Town of Pictou	Towns of New Glasgow, Pictou, Stellarton, Trenton and Westville (Common) Land Use By-law	Aug-16	27-Feb-18	C1-A	0	N	
Town of Pictou	Towns of New Glasgow, Pictou, Stellarton, Trenton and Westville (Common) Land Use By-law	Aug-16	27-Feb-18	C2	0	N	
Town of Pictou	Towns of New Glasgow, Pictou, Stellarton, Trenton and Westville (Common) Land Use By-law	Aug-16	27-Feb-18	C3	0	N	
Town of Pictou	Towns of New Glasgow, Pictou, Stellarton, Trenton and Westville (Common) Land Use By-law	Aug-16	27-Feb-18	C4	0	N	
Town of Pictou	Towns of New Glasgow, Pictou, Stellarton, Trenton and Westville (Common) Land Use By-law	Aug-16	27-Feb-18	C5	0	N	
Town of Pictou	Towns of New Glasgow, Pictou, Stellarton, Trenton and Westville (Common) Land Use By-law	Aug-16	27-Feb-18	FRA	0	N	
Town of Pictou	Towns of New Glasgow, Pictou, Stellarton, Trenton and Westville (Common) Land Use By-law	Aug-16	27-Feb-18	M1	0	N	
Town of Pictou	Towns of New Glasgow, Pictou, Stellarton, Trenton and Westville (Common) Land Use By-law	Aug-16	27-Feb-18	M2	0	N	
Town of Pictou	Towns of New Glasgow, Pictou, Stellarton, Trenton and Westville (Common) Land Use By-law	Aug-16	27-Feb-18	M3	0	N	
Town of Pictou	Towns of New Glasgow, Pictou, Stellarton, Trenton and Westville (Common) Land Use By-law	Aug-16	27-Feb-18	I	0	N	
Town of Pictou	Towns of New Glasgow, Pictou, Stellarton, Trenton and Westville (Common) Land Use By-law	Aug-16	27-Feb-18	P	0	N	
Town of Pictou	Towns of New Glasgow, Pictou, Stellarton, Trenton and Westville (Common) Land Use By-law	Aug-16	27-Feb-18	F	0	N	
Town of Pictou	Towns of New Glasgow, Pictou, Stellarton, Trenton and Westville (Common) Land Use By-law	Aug-16	27-Feb-18	W	0	N	
Town of Pictou	Towns of New Glasgow, Pictou, Stellarton, Trenton and Westville (Common) Land Use By-law	Aug-16	27-Feb-18	WS	0.5	Y	Non-intensive agricultural uses- excluding permanent buildings
Town of Pictou	Towns of New Glasgow, Pictou, Stellarton, Trenton and Westville (Common) Land Use By-law	Aug-16	27-Feb-18	AP	0	N	

AgriRisk Project: Town of Port Hawkesbury - Land Use Planning Matrix

Municipality	By-law	Amended to	Date Accessed	Zone	Policy Score	Permits New Agricultural Use	Comments
Town of Port Hawkesbury	Land Use By-law for the Town of Port Hawkesbury	Mar-10	27-Feb-18	R-1	0	N	
Town of Port Hawkesbury	Land Use By-law for the Town of Port Hawkesbury	Mar-10	27-Feb-18	R-2	0	N	
Town of Port Hawkesbury	Land Use By-law for the Town of Port Hawkesbury	Mar-10	27-Feb-18	R-3	0	N	
Town of Port Hawkesbury	Land Use By-law for the Town of Port Hawkesbury	Mar-10	27-Feb-18	R-4	0	N	
Town of Port Hawkesbury	Land Use By-law for the Town of Port Hawkesbury	Mar-10	27-Feb-18	R-5	0.5	Y	Agricultural uses permitted amongst other uses
Town of Port Hawkesbury	Land Use By-law for the Town of Port Hawkesbury	Mar-10	27-Feb-18	C-1	0	N	
Town of Port Hawkesbury	Land Use By-law for the Town of Port Hawkesbury	Mar-10	27-Feb-18	C-2	0	N	
Town of Port Hawkesbury	Land Use By-law for the Town of Port Hawkesbury	Mar-10	27-Feb-18	C-3	0	N	
Town of Port Hawkesbury	Land Use By-law for the Town of Port Hawkesbury	Mar-10	27-Feb-18	C-4	0	N	
Town of Port Hawkesbury	Land Use By-law for the Town of Port Hawkesbury	Mar-10	27-Feb-18	M-1	0	N	
Town of Port Hawkesbury	Land Use By-law for the Town of Port Hawkesbury	Mar-10	27-Feb-18	M-2	0	N	
Town of Port Hawkesbury	Land Use By-law for the Town of Port Hawkesbury	Mar-10	27-Feb-18	M-3	0	N	
Town of Port Hawkesbury	Land Use By-law for the Town of Port Hawkesbury	Mar-10	27-Feb-18	I	0	N	
Town of Port Hawkesbury	Land Use By-law for the Town of Port Hawkesbury	Mar-10	27-Feb-18	O-1	0	N	

AgriRisk Project: Town of Shelburne - Land Use Planning Matrix

Municipality	By-law	Amended to	Date Accessed	Zone	Policy Score	Permits New Agricultural Use	Comments
Town of Shelburne	Town of Shelburne Land Use By-Law	Sep-17	06-Mar-18	R-1	0	N	
Town of Shelburne	Town of Shelburne Land Use By-Law	Sep-17	06-Mar-18	R-M	0	N	
Town of Shelburne	Town of Shelburne Land Use By-Law	Sep-17	06-Mar-18	C-1	0	N	
Town of Shelburne	Town of Shelburne Land Use By-Law	Sep-17	06-Mar-18	I-1	0	N	
Town of Shelburne	Town of Shelburne Land Use By-Law	Sep-17	06-Mar-18	H-W	0	N	
Town of Shelburne	Town of Shelburne Land Use By-Law	Sep-17	06-Mar-18	R-U	0	N	

AgriRisk Project: Town of Stellarton - Land Use Planning Matrix

Municipality	By-law	Amended to	Date Accessed	Zone	Policy Score	Permits New Agricultural Use	Comments
Town of Stellarton	Towns of New Glasgow, Pictou, Stellarton, Trenton and Westville (Common) Land Use By-law	Aug-16	27-Feb-18	RR	0.5	Y	Agricultural uses permitted among other uses
Town of Stellarton	Towns of New Glasgow, Pictou, Stellarton, Trenton and Westville (Common) Land Use By-law	Aug-16	27-Feb-18	R1	0	N	Hobby Farms (but not feed lot operations, Bulk Storage, depots, chicken/pork farms, and agribusiness Uses such as a tannery, rendering plant, or equipment sale and rental)- non-commercial uses
Town of Stellarton	Towns of New Glasgow, Pictou, Stellarton, Trenton and Westville (Common) Land Use By-law	Aug-16	27-Feb-18	R2	0	N	
Town of Stellarton	Towns of New Glasgow, Pictou, Stellarton, Trenton and Westville (Common) Land Use By-law	Aug-16	27-Feb-18	R3	0	N	
Town of Stellarton	Towns of New Glasgow, Pictou, Stellarton, Trenton and Westville (Common) Land Use By-law	Aug-16	27-Feb-18	R5	0	N	
Town of Stellarton	Towns of New Glasgow, Pictou, Stellarton, Trenton and Westville (Common) Land Use By-law	Aug-16	27-Feb-18	C1	0	N	
Town of Stellarton	Towns of New Glasgow, Pictou, Stellarton, Trenton and Westville (Common) Land Use By-law	Aug-16	27-Feb-18	C1-A	0	N	
Town of Stellarton	Towns of New Glasgow, Pictou, Stellarton, Trenton and Westville (Common) Land Use By-law	Aug-16	27-Feb-18	C2	0	N	
Town of Stellarton	Towns of New Glasgow, Pictou, Stellarton, Trenton and Westville (Common) Land Use By-law	Aug-16	27-Feb-18	C3	0	N	
Town of Stellarton	Towns of New Glasgow, Pictou, Stellarton, Trenton and Westville (Common) Land Use By-law	Aug-16	27-Feb-18	C4	0	N	
Town of Stellarton	Towns of New Glasgow, Pictou, Stellarton, Trenton and Westville (Common) Land Use By-law	Aug-16	27-Feb-18	C5	0	N	
Town of Stellarton	Towns of New Glasgow, Pictou, Stellarton, Trenton and Westville (Common) Land Use By-law	Aug-16	27-Feb-18	FRA	0	N	
Town of Stellarton	Towns of New Glasgow, Pictou, Stellarton, Trenton and Westville (Common) Land Use By-law	Aug-16	27-Feb-18	M1	0	N	
Town of Stellarton	Towns of New Glasgow, Pictou, Stellarton, Trenton and Westville (Common) Land Use By-law	Aug-16	27-Feb-18	M2	0	N	
Town of Stellarton	Towns of New Glasgow, Pictou, Stellarton, Trenton and Westville (Common) Land Use By-law	Aug-16	27-Feb-18	M3	0	N	
Town of Stellarton	Towns of New Glasgow, Pictou, Stellarton, Trenton and Westville (Common) Land Use By-law	Aug-16	27-Feb-18	I	0	N	
Town of Stellarton	Towns of New Glasgow, Pictou, Stellarton, Trenton and Westville (Common) Land Use By-law	Aug-16	27-Feb-18	P	0	N	
Town of Stellarton	Towns of New Glasgow, Pictou, Stellarton, Trenton and Westville (Common) Land Use By-law	Aug-16	27-Feb-18	F	0	N	
Town of Stellarton	Towns of New Glasgow, Pictou, Stellarton, Trenton and Westville (Common) Land Use By-law	Aug-16	27-Feb-18	W	0	N	
Town of Stellarton	Towns of New Glasgow, Pictou, Stellarton, Trenton and Westville (Common) Land Use By-law	Aug-16	27-Feb-18	WS	0.5	Y	Non-intensive agricultural uses- excluding permanent buildings
Town of Stellarton	Towns of New Glasgow, Pictou, Stellarton, Trenton and Westville (Common) Land Use By-law	Aug-16	27-Feb-18	AP	0	N	

AgriRisk Project: Town of Stewiacke - Land Use Planning Matrix

Municipality	By-law	Amended to	Date Accessed	Zone	Policy Score	Permits New Agricultural Use	Comments
Town of Stewiacke	Land Use Bylaw for the Town of Stewiacke	Jan-10	27-Feb-18	R-1	0	N	
Town of Stewiacke	Land Use Bylaw for the Town of Stewiacke	Jan-10	27-Feb-18	R-2	0	N	
Town of Stewiacke	Land Use Bylaw for the Town of Stewiacke	Jan-10	27-Feb-18	R-3A	0	N	
Town of Stewiacke	Land Use Bylaw for the Town of Stewiacke	Jan-10	27-Feb-18	R-3B	0	N	
Town of Stewiacke	Land Use Bylaw for the Town of Stewiacke	Jan-10	27-Feb-18	R-4	0.5	Y	Agriculture permitted amongst other uses
Town of Stewiacke	Land Use Bylaw for the Town of Stewiacke	Jan-10	27-Feb-18	R-5	0	N	
Town of Stewiacke	Land Use Bylaw for the Town of Stewiacke	Jan-10	27-Feb-18	R-6	0	N	
Town of Stewiacke	Land Use Bylaw for the Town of Stewiacke	Jan-10	27-Feb-18	C-1	0	N	
Town of Stewiacke	Land Use Bylaw for the Town of Stewiacke	Jan-10	27-Feb-18	C-2	0	N	
Town of Stewiacke	Land Use Bylaw for the Town of Stewiacke	Jan-10	27-Feb-18	P	0	N	
Town of Stewiacke	Land Use Bylaw for the Town of Stewiacke	Jan-10	27-Feb-18	I	0	N	
Town of Stewiacke	Land Use Bylaw for the Town of Stewiacke	Jan-10	27-Feb-18	PWS	0	N	
Town of Stewiacke	Land Use Bylaw for the Town of Stewiacke	Jan-10	27-Feb-18	Con	0.5	Y	Agricultural uses and structures directly related to agricultural uses- need a waiver from Province pursuant to Agricultural Marshland Protection Act to construct permanent structures.

AgriRisk Project: Town of Trenton - Land Use Planning Matrix

Municipality	By-law	Amended to	Date Accessed	Zone	Policy Score	Permits New Agricultural Use	Comments
Town of Trenton	Towns of New Glasgow, Pictou, Stellarton, Trenton and Westville (Common) Land Use By-law	Aug-16	27-Feb-18	RR	0.5	Y	Agricultural uses permitted among other uses
Town of Trenton	Towns of New Glasgow, Pictou, Stellarton, Trenton and Westville (Common) Land Use By-law	Aug-16	27-Feb-18	R1	0	N	Hobby Farms (but not feed lot operations, Bulk Storage, depots, chicken/pork farms, and agribusiness Uses such as a tannery, rendering plant, or equipment sale and rental)- non-commercial uses
Town of Trenton	Towns of New Glasgow, Pictou, Stellarton, Trenton and Westville (Common) Land Use By-law	Aug-16	27-Feb-18	R2	0	N	
Town of Trenton	Towns of New Glasgow, Pictou, Stellarton, Trenton and Westville (Common) Land Use By-law	Aug-16	27-Feb-18	R3	0	N	
Town of Trenton	Towns of New Glasgow, Pictou, Stellarton, Trenton and Westville (Common) Land Use By-law	Aug-16	27-Feb-18	R5	0	N	
Town of Trenton	Towns of New Glasgow, Pictou, Stellarton, Trenton and Westville (Common) Land Use By-law	Aug-16	27-Feb-18	C1	0	N	
Town of Trenton	Towns of New Glasgow, Pictou, Stellarton, Trenton and Westville (Common) Land Use By-law	Aug-16	27-Feb-18	C1-A	0	N	
Town of Trenton	Towns of New Glasgow, Pictou, Stellarton, Trenton and Westville (Common) Land Use By-law	Aug-16	27-Feb-18	C2	0	N	
Town of Trenton	Towns of New Glasgow, Pictou, Stellarton, Trenton and Westville (Common) Land Use By-law	Aug-16	27-Feb-18	C3	0	N	
Town of Trenton	Towns of New Glasgow, Pictou, Stellarton, Trenton and Westville (Common) Land Use By-law	Aug-16	27-Feb-18	C4	0	N	
Town of Trenton	Towns of New Glasgow, Pictou, Stellarton, Trenton and Westville (Common) Land Use By-law	Aug-16	27-Feb-18	C5	0	N	
Town of Trenton	Towns of New Glasgow, Pictou, Stellarton, Trenton and Westville (Common) Land Use By-law	Aug-16	27-Feb-18	FRA	0	N	
Town of Trenton	Towns of New Glasgow, Pictou, Stellarton, Trenton and Westville (Common) Land Use By-law	Aug-16	27-Feb-18	M1	0	N	
Town of Trenton	Towns of New Glasgow, Pictou, Stellarton, Trenton and Westville (Common) Land Use By-law	Aug-16	27-Feb-18	M2	0	N	
Town of Trenton	Towns of New Glasgow, Pictou, Stellarton, Trenton and Westville (Common) Land Use By-law	Aug-16	27-Feb-18	M3	0	N	
Town of Trenton	Towns of New Glasgow, Pictou, Stellarton, Trenton and Westville (Common) Land Use By-law	Aug-16	27-Feb-18	I	0	N	
Town of Trenton	Towns of New Glasgow, Pictou, Stellarton, Trenton and Westville (Common) Land Use By-law	Aug-16	27-Feb-18	P	0	N	
Town of Trenton	Towns of New Glasgow, Pictou, Stellarton, Trenton and Westville (Common) Land Use By-law	Aug-16	27-Feb-18	F	0	N	
Town of Trenton	Towns of New Glasgow, Pictou, Stellarton, Trenton and Westville (Common) Land Use By-law	Aug-16	27-Feb-18	W	0	N	
Town of Trenton	Towns of New Glasgow, Pictou, Stellarton, Trenton and Westville (Common) Land Use By-law	Aug-16	27-Feb-18	WS	0.5	Y	Non-intensive agricultural uses- excluding permanent buildings
Town of Trenton	Towns of New Glasgow, Pictou, Stellarton, Trenton and Westville (Common) Land Use By-law	Aug-16	27-Feb-18	AP	0	N	

AgriRisk Project: Town of Truro - Land Use Planning Matrix

Municipality	By-law	Amended to	Date Accessed	Zone	Policy Score	Permits New Agricultural Use	Comments
Town of Truro	Town of Truro Land Use By-law	Jan-16	27-Feb-18	R1	0	N	
Town of Truro	Town of Truro Land Use By-law	Jan-16	27-Feb-18	R2	0	N	
Town of Truro	Town of Truro Land Use By-law	Jan-16	27-Feb-18	R3	0	N	
Town of Truro	Town of Truro Land Use By-law	Jan-16	27-Feb-18	R4	0	N	
Town of Truro	Town of Truro Land Use By-law	Jan-16	27-Feb-18	R5	0	N	
Town of Truro	Town of Truro Land Use By-law	Jan-16	27-Feb-18	R6	0	N	
Town of Truro	Town of Truro Land Use By-law	Jan-16	27-Feb-18	R7	0	N	
Town of Truro	Town of Truro Land Use By-law	Jan-16	27-Feb-18	R8	0.5	Y	Agriculture permitted amongst other uses
Town of Truro	Town of Truro Land Use By-law	Jan-16	27-Feb-18	R9	0.5	N	Agricultural uses permitted if existing
Town of Truro	Town of Truro Land Use By-law	Jan-16	27-Feb-18	C1	0	N	
Town of Truro	Town of Truro Land Use By-law	Jan-16	27-Feb-18	C2	0	N	
Town of Truro	Town of Truro Land Use By-law	Jan-16	27-Feb-18	C3	0	N	
Town of Truro	Town of Truro Land Use By-law	Jan-16	27-Feb-18	C4	0	N	
Town of Truro	Town of Truro Land Use By-law	Jan-16	27-Feb-18	C5	0	N	
Town of Truro	Town of Truro Land Use By-law	Jan-16	27-Feb-18	M1	0	N	
Town of Truro	Town of Truro Land Use By-law	Jan-16	27-Feb-18	M2	0	N	
Town of Truro	Town of Truro Land Use By-law	Jan-16	27-Feb-18	P1	0	N	
Town of Truro	Town of Truro Land Use By-law	Jan-16	27-Feb-18	P2	0	N	
Town of Truro	Town of Truro Land Use By-law	Jan-16	27-Feb-18	P3	0	N	
Town of Truro	Town of Truro Land Use By-law	Jan-16	27-Feb-18	E1	0	N	
Town of Truro	Town of Truro Land Use By-law	Jan-16	27-Feb-18	E2	0.5	Y	Agricultural uses permitted
Town of Truro	Town of Truro Land Use By-law	Jan-16	27-Feb-18	E3	0	N	
Town of Truro	Town of Truro Land Use By-law	Jan-16	27-Feb-18	E4	0	N	
Town of Truro	Town of Truro Land Use By-law	Jan-16	27-Feb-18	E5	0	N	

AgriRisk Project: Town of Westville - Land Use Planning Matrix

Municipality	By-law	Amended to	Date Accessed	Zone	Policy Score	Permits New Agricultural Use	Comments
Town of Westville	Towns of New Glasgow, Pictou, Stellarton, Trenton and Westville (Common) Land Use By-law	Aug-16	27-Feb-18	RR	0.5	Y	Agricultural uses permitted among other uses
Town of Westville	Towns of New Glasgow, Pictou, Stellarton, Trenton and Westville (Common) Land Use By-law	Aug-16	27-Feb-18	R1	0	N	Hobby Farms (but not feed lot operations, Bulk Storage, depots, chicken/pork farms, and agribusiness Uses such as a tannery, rendering plant, or equipment sale and rental)- non-commercial uses
Town of Westville	Towns of New Glasgow, Pictou, Stellarton, Trenton and Westville (Common) Land Use By-law	Aug-16	27-Feb-18	R2	0	N	
Town of Westville	Towns of New Glasgow, Pictou, Stellarton, Trenton and Westville (Common) Land Use By-law	Aug-16	27-Feb-18	R3	0	N	
Town of Westville	Towns of New Glasgow, Pictou, Stellarton, Trenton and Westville (Common) Land Use By-law	Aug-16	27-Feb-18	R5	0	N	
Town of Westville	Towns of New Glasgow, Pictou, Stellarton, Trenton and Westville (Common) Land Use By-law	Aug-16	27-Feb-18	C1	0	N	
Town of Westville	Towns of New Glasgow, Pictou, Stellarton, Trenton and Westville (Common) Land Use By-law	Aug-16	27-Feb-18	C1-A	0	N	
Town of Westville	Towns of New Glasgow, Pictou, Stellarton, Trenton and Westville (Common) Land Use By-law	Aug-16	27-Feb-18	C2	0	N	
Town of Westville	Towns of New Glasgow, Pictou, Stellarton, Trenton and Westville (Common) Land Use By-law	Aug-16	27-Feb-18	C3	0	N	
Town of Westville	Towns of New Glasgow, Pictou, Stellarton, Trenton and Westville (Common) Land Use By-law	Aug-16	27-Feb-18	C4	0	N	
Town of Westville	Towns of New Glasgow, Pictou, Stellarton, Trenton and Westville (Common) Land Use By-law	Aug-16	27-Feb-18	C5	0	N	
Town of Westville	Towns of New Glasgow, Pictou, Stellarton, Trenton and Westville (Common) Land Use By-law	Aug-16	27-Feb-18	FRA	0	N	
Town of Westville	Towns of New Glasgow, Pictou, Stellarton, Trenton and Westville (Common) Land Use By-law	Aug-16	27-Feb-18	M1	0	N	
Town of Westville	Towns of New Glasgow, Pictou, Stellarton, Trenton and Westville (Common) Land Use By-law	Aug-16	27-Feb-18	M2	0	N	
Town of Westville	Towns of New Glasgow, Pictou, Stellarton, Trenton and Westville (Common) Land Use By-law	Aug-16	27-Feb-18	M3	0	N	
Town of Westville	Towns of New Glasgow, Pictou, Stellarton, Trenton and Westville (Common) Land Use By-law	Aug-16	27-Feb-18	I	0	N	
Town of Westville	Towns of New Glasgow, Pictou, Stellarton, Trenton and Westville (Common) Land Use By-law	Aug-16	27-Feb-18	P	0	N	
Town of Westville	Towns of New Glasgow, Pictou, Stellarton, Trenton and Westville (Common) Land Use By-law	Aug-16	27-Feb-18	F	0	N	
Town of Westville	Towns of New Glasgow, Pictou, Stellarton, Trenton and Westville (Common) Land Use By-law	Aug-16	27-Feb-18	W	0	N	
Town of Westville	Towns of New Glasgow, Pictou, Stellarton, Trenton and Westville (Common) Land Use By-law	Aug-16	27-Feb-18	WS	0.5	Y	Non-intensive agricultural uses- excluding permanent buildings
Town of Westville	Towns of New Glasgow, Pictou, Stellarton, Trenton and Westville (Common) Land Use By-law	Aug-16	27-Feb-18	AP	0	N	

AgriRisk Project: Town of Windsor - Land Use Planning Matrix

Municipality	By-law	Amended to	Date Accessed	Zone	Policy Score	Permits New Agricultural Use	Comments
Town of Windsor	Town of Windsor Land Use By-Law	Jul-12	09-Feb-18	R-1	0	N	
Town of Windsor	Town of Windsor Land Use By-Law	Jul-12	09-Feb-18	R-2	0	N	
Town of Windsor	Town of Windsor Land Use By-Law	Jul-12	09-Feb-18	R-3	0	N	
Town of Windsor	Town of Windsor Land Use By-Law	Jul-12	09-Feb-18	R-4	0	N	
Town of Windsor	Town of Windsor Land Use By-Law	Jul-12	09-Feb-18	CR-CDD	0	N	
Town of Windsor	Town of Windsor Land Use By-Law	Jul-12	09-Feb-18	TC	0	N	
Town of Windsor	Town of Windsor Land Use By-Law	Jul-12	09-Feb-18	P-CDD	0	N	
Town of Windsor	Town of Windsor Land Use By-Law	Jul-12	09-Feb-18	LC	0	N	
Town of Windsor	Town of Windsor Land Use By-Law	Jul-12	09-Feb-18	GC	0	N	
Town of Windsor	Town of Windsor Land Use By-Law	Jul-12	09-Feb-18	HC	0	N	
Town of Windsor	Town of Windsor Land Use By-Law	Jul-12	09-Feb-18	SC	0	N	
Town of Windsor	Town of Windsor Land Use By-Law	Jul-12	09-Feb-18	FG	0	N	
Town of Windsor	Town of Windsor Land Use By-Law	Jul-12	09-Feb-18	LI-1	0	N	
Town of Windsor	Town of Windsor Land Use By-Law	Jul-12	09-Feb-18	LI-2	0	N	
Town of Windsor	Town of Windsor Land Use By-Law	Jul-12	09-Feb-18	LI-3	0	N	
Town of Windsor	Town of Windsor Land Use By-Law	2012-07-24	2018-02-09	I	0	N	
Town of Windsor	Town of Windsor Land Use By-Law	2012-07-24	2018-02-09	OS	0	N	
Town of Windsor	Town of Windsor Land Use By-Law	2012-07-24	2018-02-09	AG	1	Y	Agricultural uses and structures, commercial riding stables, non-permanent facilities for sale of produce, single unit dwellings, accessory to agricultural operations, and telecommunications towers and accessory buildings all permitted uses
Town of Windsor	Town of Windsor Land Use By-Law	2012-07-24	2018-02-09	WR-C	0	N	

AgriRisk Project: Town of Wolfville - Land Use Planning Matrix

Municipality	By-law	Amended to	Date Accessed	Zone	Policy Score	Permits New Agricultural Use	Comments
Town of Wolfville	Town of Wolfville Land Use By-Law	Jan-16	09-Feb-18	R-1	0	N	
Town of Wolfville	Town of Wolfville Land Use By-Law	Jan-16	09-Feb-18	R-1A	0	N	
Town of Wolfville	Town of Wolfville Land Use By-Law	Jan-16	09-Feb-18	R-2/4	0	N	
Town of Wolfville	Town of Wolfville Land Use By-Law	Jan-16	09-Feb-18	R-2/HD	0	N	
Town of Wolfville	Town of Wolfville Land Use By-Law	Jan-16	09-Feb-18	RCDD	0.5	N	Allows existing agricultural uses
Town of Wolfville	Town of Wolfville Land Use By-Law	Jan-16	09-Feb-18	C-1	0	N	
Town of Wolfville	Town of Wolfville Land Use By-Law	Jan-16	09-Feb-18	C-2	0	N	
Town of Wolfville	Town of Wolfville Land Use By-Law	Jan-16	09-Feb-18	C-3	0	N	
Town of Wolfville	Town of Wolfville Land Use By-Law	Jan-16	09-Feb-18	C-4	0	N	
Town of Wolfville	Town of Wolfville Land Use By-Law	Jan-16	09-Feb-18	I-1	0	N	
Town of Wolfville	Town of Wolfville Land Use By-Law	Jan-16	09-Feb-18	I-2	0	N	
Town of Wolfville	Town of Wolfville Land Use By-Law	Jan-16	09-Feb-18	I-2D	0	N	
Town of Wolfville	Town of Wolfville Land Use By-Law	Jan-16	09-Feb-18	P	0	N	Community gardens allowed
Town of Wolfville	Town of Wolfville Land Use By-Law	Jan-16	09-Feb-18	REC	0	N	
Town of Wolfville	Town of Wolfville Land Use By-Law	Jan-16	09-Feb-18	A	1	Y	Also allows passive recreational uses with permission of property owner and pre-existing uses (before zoning implemented)
Town of Wolfville	Town of Wolfville Land Use By-Law	Jan-16	09-Feb-18	TC	0	N	

AgriRisk Project: Town of Yarmouth- Land Use Planning Matrix

Municipality	By-law	Amended to	Date Accessed	Zone	Policy Score	Permits New Agricultural Use	Comments
Town of Yarmouth	Town of Yarmouth Land Use By-Law	Jun-16	12-Feb-18	R-1	0	N	
Town of Yarmouth	Town of Yarmouth Land Use By-Law	Jun-16	12-Feb-18	A-S			
Town of Yarmouth	Town of Yarmouth Land Use By-Law	Jun-16	12-Feb-18	R-2	0	N	
Town of Yarmouth	Town of Yarmouth Land Use By-Law	Jun-16	12-Feb-18	R-3	0	N	
Town of Yarmouth	Town of Yarmouth Land Use By-Law	Jun-16	12-Feb-18	R-M	0	N	
Town of Yarmouth	Town of Yarmouth Land Use By-Law	Jun-16	12-Feb-18	CD	0.5	Y	Agricultural uses (except those prohibited in 5.37) may be established in conjunction with any permitted use or as a stand alone use for community or individual purposes.
Town of Yarmouth	Town of Yarmouth Land Use By-Law	Jun-16	12-Feb-18	R-H	0.5	Y	Agricultural uses may be established in conjunction with any permitted use or as a stand alone use- except those uses prohibited by Part 5.37 (livestock)- crops are allowed
Town of Yarmouth	Town of Yarmouth Land Use By-Law	Jun-16	12-Feb-18	C-1	0	N	
Town of Yarmouth	Town of Yarmouth Land Use By-Law	Jun-16	12-Feb-18	DTZ	0	N	
Town of Yarmouth	Town of Yarmouth Land Use By-Law	Jun-16	12-Feb-18	C-2	0	N	
Town of Yarmouth	Town of Yarmouth Land Use By-Law	Jun-16	12-Feb-18	C-2M	0	N	
Town of Yarmouth	Town of Yarmouth Land Use By-Law	Jun-16	12-Feb-18	C-3	0	N	
Town of Yarmouth	Town of Yarmouth Land Use By-Law	Jun-16	12-Feb-18	C-4	0	N	
Town of Yarmouth	Town of Yarmouth Land Use By-Law	Jun-16	12-Feb-18	C-H	0	N	
Town of Yarmouth	Town of Yarmouth Land Use By-Law	Jun-16	12-Feb-18	CI-4	0	N	
Town of Yarmouth	Town of Yarmouth Land Use By-Law	Jun-16	12-Feb-18	WCI-5	0	N	
Town of Yarmouth	Town of Yarmouth Land Use By-Law	Jun-16	12-Feb-18	M-1	0	N	
Town of Yarmouth	Town of Yarmouth Land Use By-Law	Jun-16	12-Feb-18	M-2	0	N	
Town of Yarmouth	Town of Yarmouth Land Use By-Law	Jun-16	12-Feb-18	WMU	0	N	
Town of Yarmouth	Town of Yarmouth Land Use By-Law	Jun-16	12-Feb-18	O-1	0	N	
Town of Yarmouth	Town of Yarmouth Land Use By-Law	Jun-16	12-Feb-18	O-2	0	N	
Town of Yarmouth	Town of Yarmouth Land Use By-Law	Jun-16	12-Feb-18	E-S	0	N	
Town of Yarmouth	Town of Yarmouth Land Use By-Law	Jun-16	12-Feb-18	I-1	0	N	
Town of Yarmouth	Town of Yarmouth Land Use By-Law	Jun-16	12-Feb-18	HC	0	N	