



# News & Views

Vol. 25 No. 07

September 2013

## Meet Your Farmer at the Mall

These farm animals headed to the city and made a big impression on shoppers that came across them at Mic Mac Mall during the Meet Your Farmer at the Mall event in late August. Children and families of all ages loved getting some one-on-one time with the animals and taking part in the various Select NS cooking demos and other aggie demonstrations. It was a lot of work and a big thank you to organizers through the Nova Scotia Agricultural Awareness office and all the participating commodity groups.



The crowd was steady over the two days, but we would like to see more farmers taking part. Thank you to the few that took time away from their busy schedules and came to meet their consumers! As a booth participant, the first question often asked is, "Where is your farm?" As a Federation staff person, having

grown up on the farm and still fairly involved in the family farm, I can answer 'somewhat truthfully'... I know it is hard to pull yourself away from the normal routine of your farm, but I can't stress enough the importance of building on our positive image of agriculture. You, the farmers, are the only ones that can keep this momentum going. The general public wants to get to know you, wants to find out where their food and agri-products come from.

So, what will it take to get you out and get involved in similar AgAwareness events in the future? Email Wanda at [whamilton@nsfa-fane.ca](mailto:whamilton@nsfa-fane.ca) - Tell me what keeps you from participating in events like Open Farm Day, Meet Your Farmer at the Mall, Agricultural Literacy Week or other promotions of agriculture?



*Shown in the picture is our summer student, Karley Hewitt, in the NSFA booth at the mall.*

### NS Federation of Agriculture calling on political parties to put agriculture top of mind:

#### Ask your candidate...

- ⇒ To double the provincial investment of agriculture through programs that directly impact farmers.
- ⇒ To provide adequate incentives and mentoring for new entrants.
- ⇒ To move forward with recommendations from the report, 'Protecting and Preserving Agricultural Land.'
- ⇒ To reinstate the 15% provincial investment tax credit on new machinery, equipment, buildings and land improvement.

*Small requests for an industry that generates \$2.3/billion in economic spin-off annually.*

Find out more, contact us today...

[www.nsfa-fane.ca](http://www.nsfa-fane.ca) ~ [info@nsfa-fane.ca](mailto:info@nsfa-fane.ca) ~ (902) 893-2293 ~ [Facebook.com/NSFAMeetYourFarmer](https://www.facebook.com/NSFAMeetYourFarmer) ~ [Twitter.com/NSFA](https://twitter.com/NSFA)

A message from the  
Nova Scotia Federation  
of Agriculture





## Dropping the Writ

### Henry Visser

*Executive Director, Nova Scotia Federation of Agriculture*

Based on the number of announcements in the past few weeks I would expect that by the time you're reading this, the election will have been called. Let the race begin!

Election time is a good time for us to get our message out to all parties. As they roll out their platforms we will be able to tell how engaged they have been over the past four plus years in agriculture and the rural economy. Kim Campbell, Prime Minister during the federal election following Brian Mulroney's resignation, famously said that "an election is no time to discuss serious issues". (She was quoted out of context since the discussion was around a complete overhaul of the Canadian Social System.)

It is possible to have a serious conversation about agriculture during an election; we invite the Agriculture Minister and Agriculture Critics to a panel during the election. Prior to election time, we also invite them all to address the Federation's AGM every November, ask to meet with each of the caucuses every year, and hold at least one event at the legislature when it is in session.

Some announcements have been made by government over the past few weeks, but of course the funds are all for next year and are predicated on the return of the current government.

The Federation's policy document outlines a number of areas where we would like to see investment by the province:

An increase in Provincial Investment:

The Nova Scotia Department of Agriculture's Home Grown Success Program and the Agri-Suite of programs are driven by federal policy. The Province should increase the level of investment on NS farms to double the amount currently invested in Home Grown Success and, since this is 100% provincial funding, the focus of the funding should be provincial priorities.

The NSFA is seeking more support for new entrants by way of changes in programs and policies around loan guarantees, interest subsidies, infrastructure funding, tax incentives and mentoring.

Land use continues to be an important topic, since the release of the policy framework report titled Protecting and Preserving Agriculture Land in Nova Scotia, <http://www.gov.ns.ca/agri/Protecting-and-Preserving-Agricultural-Land-in-Nova-Scotia.pdf>, little has changed other than a debate about the statement of the provincial interest. NSFA wants consultation and movement on the recommendations in the report.

Farming requires a large investment and deployment of capital, and the restoration of the 15% provincial income tax credits on machinery, equipment, buildings and land improvement for farms, would help farmers make further investment in rural Nova Scotia. We would all benefit from the economic activity generated.

Farm Health and Safety has been an important issue for farms not only to meet OH&S compliance but to create a safety culture and make farms a safe workplace for family and employees. NSFA was pleased with the support of the Nova Scotia Department of Agriculture

# Dropping the Writ continued

in providing support of \$30,000 to invest in staff resources for farm safety; the Province should now make that a 5 year commitment of support. NSFA believes the farm safety category of Home Grown Success should be reinstated so farmers have the help they need to buy safety equipment and training for their farms.

Last year we were able to get two food goals added to the Environmental Goals and Sustainable Prosperity Act. We want to see progress on meeting these targets:

- 20% of our food spending from local farms by 2020 and increased local procurement by government.
- A 5% increase of new farmers to the Nova Scotia Farm Registration System by 2020.

You can help drive this message home. Meet, call, or email the candidates in your riding, tell them your story and ask for their support in addressing the priorities for agriculture.

We will have an election button on our website ([www.nsfa-fane.ca](http://www.nsfa-fane.ca)) that will take you to a list of all candidates, platforms as they are announced, and any other pertinent information. You can also follow us on twitter/nsfa or Facebook@nsfafane.

**Comments?**

**Email: [hvissters@nsfa-fane.ca](mailto:hvissters@nsfa-fane.ca)**

## Essential Business Management Skills

You decided to farm most likely because you enjoy working with livestock, crops and/or machinery. Few get into business because they enjoy the management necessities of a business! However, running a business requires different skill sets beyond production. Through this course we will look at management skills to increase your success rate, covering such topics as marketing, human resource management, understanding financials, communication and negotiation skills, knowledge of business legal issues, inventory control, planning, organization, problem solving, strategic planning, record keeping, business planning, succession planning, etc. The specific areas covered will depend on the needs of the participants.

**Location: Truro – Perennia Innovation Park**

**Time: 13 weeks; every Tuesday or Wednesday evenings from 6:30 to 9:30 starting early October**

**Instructor: Yvonne Thyssen-Post, P. AG., Thyagrissen Consulting Ltd.**

The only cost to the participants is the time that they invest in attending the sessions.

We do encourage spouses, other family members, and key employees to register as well, if they are directly involved in the farm business.

To register for this course please call Shelly MacKenzie at the NSFA office at 893-2293 or e-mail [info@nsfa-fane.ca](mailto:info@nsfa-fane.ca) or mail to 60 Research Drive, Bible Hill, NS B6L 2R2. We are limited to a maximum of 12 participants per session.

Deadline for registering is **September 18th, 2013.**

Note: A similar course will be offered beginning in January, 2014 in Stewiacke from 10 a.m. to 3 p.m. one day per week for 8 weeks. Please sign up for whichever course has the time and location most convenient for you.

These Workplace Education opportunities are sponsored by the Nova Scotia Federation of Agriculture, the Nova Scotia Department of Agriculture, and the Nova Scotia Department of Labour and Advanced Education.



# Protecting Yourself Against On-Farm Accidents



*submitted by Carolyn VanDenHeuvel*

Risk management is a critical part of every business plan and there are many aspects to consider in farming, insurance being one. Insurance is an essential part of risk management, whether it is for crops, equipment, liability or disability. We recognize farming as a hazardous occupation. Farmers accept the risk involved in farming each and every day. The economic loss that could result from an accident can be a huge financial burden. The Canadian Agricultural Safety Association says farmers could incur financial losses between \$700 and \$275 000, depending on the severity of the accident. It is important to stop and consider whether or not you would be able to absorb the costs associated with an on-farm accident: can you pay the injured employee and hire a replacement? Can you afford the legal costs associated with a law suit?

It is most likely that margins are tight and it would not be possible to simply absorb the cost of an on-farm accident. It is therefore important to consider purchasing disability and liability insurance for yourself and your workers. There are numerous types of insurance available to farmers in Nova Scotia:

**Workers' Compensation Board** provides workplace insurance to employers and employees across the province. It is a provincially-managed system funded entirely by the enrolled employers. The base rate at which you are charged for insurance depends on your industry. In agriculture, the divisions are among commodities. The base rate is a reflection of the workplace injuries in that particular sector over the year. All enrolled employers and employees waive their right to sue in the case of an accident. WCB is a no-fault insurance, which means workplace injuries are compensated regardless of fault. WCB compensates for both economic loss and incurred medical expenses as a result of the accident. WCB is available to all employers in Nova Scotia and is a requirement for farmers participating in the Seasonal Agricultural Workers Program.

**Private Insurance Companies** offer various types of insurance based on the specific business. It is important to ensure the coverage is appropriate for your operation. Disability insurance – provides benefits to a person who suffers an injury. The claim must be investigated and accepted prior to compensating the injured person. Depending on the insurance, it may or may not be restricted to only workplace accidents.

Liability insurance – provides the owner with protection from claims due to bodily injury or property damage, but does not include coverage for the employees. Liability is generally limited, depending on your coverage.

Whichever type of insurance you choose it is important to consider it as part of your business risk management plan. Having liability and disability insurance could be the difference between your farm surviving the financial burden of an accident or not.

For more information visit the Workers' Compensation Board website, [www.wcb.ns.ca](http://www.wcb.ns.ca) or contact a local insurance provider.

## NSFWDA Alive & Active

The Nova Scotia Farmers With Disabilities Association (NSFWDA) is alive and active and held its annual meeting June 17th at Smitty's in Truro.

NSFWDA members volunteer their time and offer peer support to newly injured/ill farmers by those who have "been there" themselves. This gives the injured/ill farmer and his/her family a chance to talk about their situation and has also proven to give the affected family the courage that, with modifications etc., they can still farm if they wish. They also provide programs & services attending exhibitions, fairs, Farm Safety Day camps & work with 4H clubs to promote safety awareness.

For more information please go to [www.nsfarmerwithdisabilities.weebly.com](http://www.nsfarmerwithdisabilities.weebly.com)



# Don't Forget Open Farm Day



Don't forget to get out and visit your fellow farmer on September 15th. We have 51 farms participating all across the province, check out all the details at [www.meetyourfarmer.ca](http://www.meetyourfarmer.ca)

## Truro Agromart Corn & Soybean Days



September 16, 2013: Gordon Jackson's farm,  
Clarence, at the Leonard Road, in a field just south of and adjacent to Highway #101,  
Time: 10:30 to 1:30.

Come and tour some new varieties of DEKALB corn and soybeans, and help DEKALB and Truro Agromart Limited thank Gordon and Joyce for all of their years of promoting DEKALB products.

GPS demonstration to follow.

Lunch will be served.

September 17, 2013: Charles Hill and Son, Onslow.

Time: 10:30-1:30

Come and tour the corn plot with DeKalb, Elite and Croplan varieties. Soybean plot with DeKalb beans is farther up the road and we can travel to that site after the corn plot.

GPS demonstration to follow.

Lunch will be served.

For more information on either of these tours, contact Truro Agromart at 895-2857

# Don't let your soils Bare Old Man Winter!



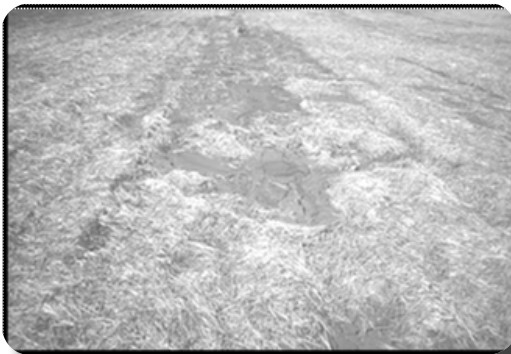
*Submitted by Janette McDonald*

Leaving soils uncovered after crops have been harvested can lead to increased soil erosion in fields. Soil erosion occurs when wind and precipitation carry soil away. Soils that are

used to grow row crops are more at risk for soil erosion, especially fields that have a slope. Fields can be impacted by erosion differently each year. Last winter saw little permanent snow cover and more snow melting events causing rill erosion in fields with slope. Strong winds also had an erosion impact on fields where little snow cover was found. Keeping soils covered is a good way to prevent soil erosion! Apply mulch or plant a cover crop to protect your precious resource! Now is the time to plan how your fields will be adequately covered to reduce soil erosion.

When row crops such as corn, soybeans, and grains are harvested, little residue is left in the field to help keep soil in place.

For example, silage corn only leaves 5% of the soil covered. It is important to ensure that at least 85% of the soils surface is covered



during the winter. Farmers can add mulch, such as hay mulch, to fields to reduce soil displacement associated with the impact of precipitation hitting the soil. They also reduce the volume and velocity of runoff over the soil. It is recommended that hay mulching be implemented at a rate of 3.3 T/ha (1.5 T/ac). On areas of the field prone to erosion, the mulch should be applied at a rate of 4.5 T/ha (2 T/ac). At these rates the mulch will cover 85 to 100 % of the soil surface respectively. It is also recommended that mulching be done across the slope to ensure that there are no wheel ruts up and down the slope that would allow water to collect and cause more severe erosion in the wheel tracks. If fields are too wet for farm machinery, then apply the mulch when the ground is frozen.

Planting cover crops is a way to hold soil in place but to also hold onto nutrients and make nutrients more available for plant growth. Winter rye is a commonly used cover crop and if planted in early October, it will usually have time to become established. Consider harvesting fields with greater slopes first so a cover crop can be planted.



The loss of fertile soil is not only a problem for the farmer, it is an environmental problem. When soil and nutrients carried by the soil enters a water-course, fish and aquatic habitat is negatively impacted. Cover crops and mulching are a few ways to reduce soil erosion but as you make plans for next year's crops consider your crop rotation and the practice of underseeding, implementing conservation tillage practices, cross-slope farming and buffer strips.

For more information on keeping your soil covered check out the "Soil Conservation Practices" factsheet and others on cover crops at: <http://nsfa-fane.ca/member-services/environmental-farm-plan/fact-sheets/> or contact the EFP office at: 893-2293.

## **Pesticide Sprayer Calibration Service**

The Nova Scotia Federation of Agriculture in cooperation with Crop Life Canada and the pesticide manufacturers, would like to announce they are offering a Pest Sprayer Calibration Service.

The service is free to Nova Scotia farmers and bookings can be made by calling the NSFA office at 893-2293. Limited spaces are available so be sure to register soon! There will be 4 pesticide points available as part of the calibration service.

# Guidelines for Proper Livestock Fencing

Proper fencing is essential for controlling livestock, protecting animals from predators, and good pasture management. The newly developed Livestock Fencing Guidelines describe three types of fencing used in Nova Scotia – electric, barbed wire, and page wire – and cover construction techniques, materials, and appropriate dimensions.

As a minimum all livestock farms should have a permanent perimeter fence capable of keeping the livestock on the owner's property. The perimeter fence should be constructed of sturdy posts and wire that is securely fastened with appropriate hardware. Livestock farmers with land in certain exposed areas – next to a major highway or a schoolyard, for example – may need to build their fences to a higher standard.

Any fencing system can fail due to circumstances beyond the owner's control. Examples include power outages, when an electric fence will not work, and snow accumulation, which may allow cattle to simply walk over the fence. Livestock may break through fences if they are roaming in search of food, so owners should ensure that adequate water and feed are readily available. In general, owners need to manage their fences on an ongoing basis to ensure they function continuously, and take the measures necessary to keep animals from escaping.

The 2013 guidelines are available on the NSFA website, under member services/farmer resources. <http://nsfa-fane.ca/member-services/farmer-resources/>

## Financial Management Course Coming To Kentville

The Federation is launching a Workplace Education Session for Farmers in Kentville. So if you have been thinking about improving your farm's efficiency and upgrading your book keeping standards, this is the opportunity for you! But we caution that space is limited. Each course is limited to 12 people. If we have more people apply, and there are sufficient numbers to run a second course, we will attempt to schedule another course in this location to start a bit later in the year.

The first session for this course is to begin the week of October 3rd. The sessions are to be held at the Fairwinds Training and Development office, Suite 201, 7165 Highway #1, Coldbrook, N.S. and will run on Thursdays from 8:30 a.m. to 12:30 p.m. for 10 weeks. The only cost to you is the time that you invest in attending the sessions.

### Topics covered will include:

- Financial Record Keeping – The What
- Understanding Reporting Requirements and Remittances – The Why
- Recording Business Transactions – The How
- Reading Financial Statements and Reports – The Results/Analysis
- Using Financial Data For Decision Making – The Measurements/Analysis

We do encourage spouses, other family members, and key employees to register as well if they are directly involved in the farm business.

To register for this course please call Shelly MacKenzie at the NSFA office at 893-2293 or e-mail [info@nsfa-fane.ca](mailto:info@nsfa-fane.ca) or mail to 60 Research Drive, Bible Hill, NS B6L 2R2.

Deadline for registering is **September 18th, 2013**.

These Workplace Education opportunities are sponsored by the Nova Scotia Federation of Agriculture, the Nova Scotia Department of Agriculture, and the Nova Scotia Department of Labour and Advanced Education.



## Blueberry-Lemon Crumb Bars

### Ingredients

#### Crust:

2 cups	all-purpose flour
2 tbsp	white sugar
2 tsp	lemon zest
1 pinch	salt
1/2 cup	butter, chilled and diced
1	egg
1 tsp	vanilla extract

#### Filling:

2 cups	fresh blueberries
1/4 cup	white sugar
1/8 tsp	ground nutmeg

#### Crumb Topping:

5 tbsp	butter, softened
1/2 cup	packed brown sugar
3/4 cup	all-purpose flour
1/4 cup	confectioners' sugar for dusting

### Directions

1. Preheat oven to 400 degrees F (200 degrees C). Grease a 9x13 inch baking pan.
2. Start by making the crust. In a medium bowl, stir together the 2 cups flour, 2 tablespoons white sugar, lemon zest and salt. Cut in the 1/2 cup butter until the mixture resembles coarse crumbs. Beat egg and vanilla together, stir into the crumb mixture until a dough forms. Press into the bottom of the prepared pan.
3. Bake for 12 to 15 minutes in the preheated oven, until golden. Remove from oven and set aside to cool slightly.
4. Sprinkle blueberries over the crust. Combine the 1/4 cup sugar and nutmeg; sprinkle over the blueberries. Make the topping: In a medium bowl, cream together the 5 tablespoons butter and brown sugar until smooth. Mix in the flour, so that the mixture is crumbly like streusel. Sprinkle over the blueberry layer.
5. Bake for 20 to 25 minutes in the preheated oven, until browned. Cool and then dust with confectioners' sugar before cutting into bars.



## Equipment Available to Farmers

The Environmental Farm Plan Program has several pieces of equipment that are available to loan to farmers.

The equipment includes:

- Soil probes for taking soil samples
- Wind meters for measuring wind speed when spraying
- Residue management kit for determining plant residue levels left on the soil surface

The equipment can be borrowed by contacting the Environmental Farm Plan office (902) 893-2293.

Sharps containers and sprayer calibration containers are also available for farmers.

The Nova Scotia Federation of Agriculture is a proud supporter of 4-H and would like to send Best Wishes and Congratulations to the 4-Hers headed to Pro Show, September 27 - 29th in Bridgewater, NS.



## News & Views

**NSFA News & Views** is the Newsletter of the NS Federation of Agriculture, the United, Strong & Caring Farm Organization representing the best interest of Nova Scotia's Agricultural Industry.

**News & Views** is provided free of charge to its members. We value comments and concerns from our members, please direct them to Executive members or the Office Staff.

### 2013 Executive Members:

President:	<b>Dennis Boudreau</b>	Phone: 769-3501
1st Vice President:	<b>Chris van den Heuvel</b>	Phone: 631-1884
2nd Vice President:	<b>David Young</b>	Phone: 543-8748
CFA Director:	<b>Dennis Boudreau</b>	Phone: 769-3501
At Large:	<b>Kimberly Stokdijk</b>	Phone: 897-2402
At Large:	<b>Lloyd Dyck</b>	Phone: 538-3083
At Large:	<b>Jim Baillie</b>	Phone: 657-2256
Past President:	<b>Beth Densmore</b>	Phone: 369-2876

**Staff:** Executive Director: Henry Vissers; Operations Manager: Donna Langille; Financial Services Officer: Krista Vroegh; Administrative Officer: Shelly MacKenzie; Communications Officer: Wanda Hamilton; Farm Safety/EFP Coordinator: Trevor Davison, Carolyn Van Den Heuvel, Farm Safety Advisor, EFP Staff, Katherine Bremner, Paul Brenton, Lynda Weatherby, Janette McDonald

60 Research Drive, Perennia Innovation Park, Bible Hill, N.S.

Ph: 893-2293 Fax: 893-7063

Email: [info@nsfa-fane.ca](mailto:info@nsfa-fane.ca)

Website: [www.nsfa-fane.ca](http://www.nsfa-fane.ca)

